

## Anti-14-3-3 zeta Mouse mAb

Purified Recombinant Mouse Monoclonal Antibody

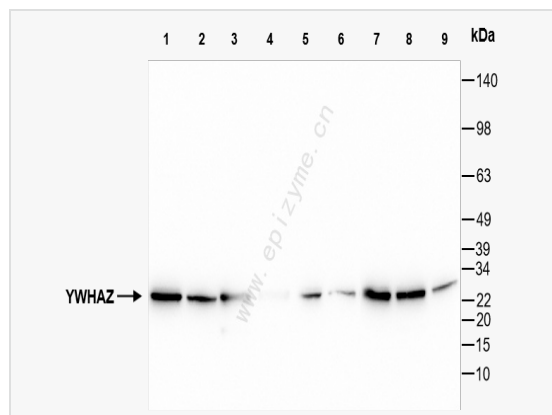
Catalog # M015165

### Product Information

Application	WB, IF (Cell)/ICC, ELISA
Reactivity	Human, Mouse (Cell), Rat
Dilution	WB 1:1,000~1:2,000; IF 1:100~1:200
Host	Mouse
Clonality	Monoclonal
Clone No.	77D48L02
Isotype	IgG
Label	Unconjugated
Immunogen	Recombinant protein of human 14-3-3 zeta
Format	Affinity purified monoclonal antibody supplied in PBS with 0.01% sodium azide and 50% glycerol, pH 7.3.
Storage	Shipped on wet ice. Store at -20°C. Stable for 24 months from date of receipt. Aliquoting is unnecessary for -20°C storage.
Precautions	Anti-14-3-3 zeta Mouse mAb [77D48L02] is for research use only and not for use in diagnostic or therapeutic procedures.

### Protein Information

Synonyms	14 3 3 delta; 14 3 3 protein zeta/delta; 14 3 3 protein/cytosolic phospholipase A2; 14 3 3 zeta; 14-3-3 protein zeta/delta; 1433Z_HUMAN; Epididymis luminal protein 4; Epididymis secretory protein Li 3; HEL S 3; HEL4; KCIP-1; KCIP1; MGC111427; MGC126532; MGC138156; Phospholipase A2; Protein kinase C inhibitor protein 1; Tyrosine 3 monooxygenase/tryptophan 5 monooxygenase activation protein, delta polypeptide; Tyrosine 3 monooxygenase/tryptophan 5 monooxygenase activation protein, zeta; Tyrosine 3 monooxygenase/tryptophan 5 monooxygenase activation protein, zeta polypeptide; Tyrosine 3/tryptophan 5 monooxygenase activation protein, zeta polypeptide; YWHAD; YWHAZ.
Calculated MW	Calculated MW: 28 kDa; Observed MW: 28 kDa
Uniprot ID	P63104
Gene ID	7534
Background	This gene product belongs to the 14-3-3 family of proteins which mediate signal transduction by binding to phosphoserine-containing proteins. This highly conserved protein family is found in both plants and mammals, and this protein is 99% identical to the mouse, rat and sheep orthologs. The encoded protein interacts with IRS1 protein, suggesting a role in regulating insulin sensitivity. Several transcript variants that differ in the 5' UTR but that encode the same protein have been identified for this gene. [provided by RefSeq, Oct 2008].
Cellular Location	Cytoplasm. Melanosome. Located to stage I to stage IV melanosomes.



Western Blot - Anti-14-3-3 zeta Mouse mAb [77D48L02]

All lanes: M015165 at 1:1,000 dilution

Lane 1: A549 (Human lung carcinoma epithelial cell) whole cell lysates

Lane 2: HepG2 (Human hepatocarcinoma epithelial cell) whole cell lysates

Lane 3: HCT116 (Human colorectal carcinoma epithelial cell) whole cell lysates

Lane 4: A431 (Human epidermoid teratoma cell line) whole cell lysates

Lane 5: Caco2 (Human colorectal adenocarcinoma epithelial cell) whole cell lysates

Lane 6: Jurkat (Human T lymphocytic leukemia cell) whole cell lysates

Lane 7: C2C12 (Mouse myoblasts epithelial cell) whole cell lysates

Lane 8: Raw264.7 (Mouse mononuclear macrophage leukemia cell) whole cell lysates

Lane 9: Rat liver whole tissue lysates

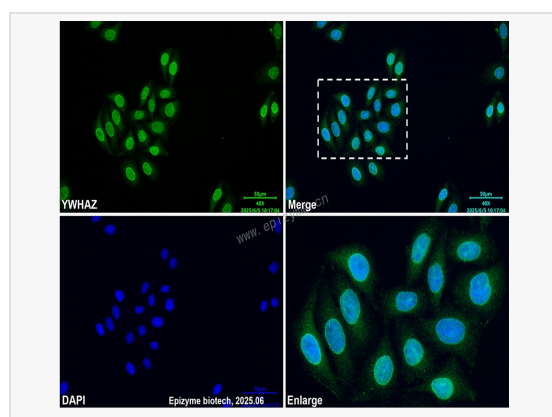
Lysates/proteins at 10 µg per lane.

Secondary antibody: Goat Anti-Mouse IgG (H+L), HRP Conjugated (Cat. No. LF101) at 1:5,000 dilution

Predicted band size: 28 kDa

Observed band size: 28 kDa

Developed using the ECL technique (Cat. No. SQ201).



Immunofluorescence - Anti-14-3-3 zeta Mouse mAb [77D48L02]

Sample: HeLa cells

The cells were fixed with 4% paraformaldehyde (10 min), permeabilized with 0.5%

Triton X-100 for 10 minutes and then blocked with 5% BSA in 0.1% PBS-Tween for 0.5 hours.

Primary antibody: M015165 at 1:100 dilution

Secondary antibody: Goat anti-Mouse (488) at 1:1,000 dilution (shown in green)

Nuclei were stained with DAPI (shown in blue).