

Anti-ABL2 Rabbit mAb

Purified Recombinant Rabbit Monoclonal Antibody

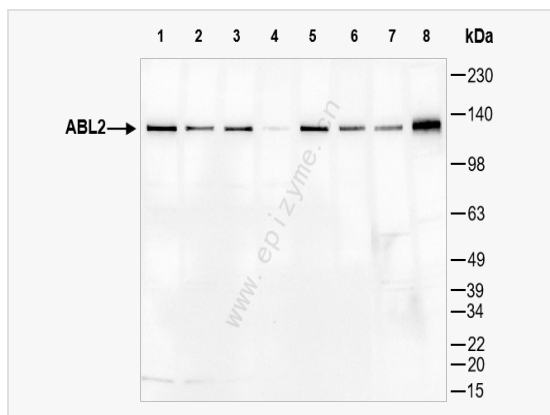
Catalog # R015156

Product Information

Application	WB, ELISA
Reactivity	Human
Dilution	WB 1:1,000~1:3,000
Host	Rabbit
Clonality	Monoclonal
Clone No.	65K48M09
Isotype	IgG
Label	Unconjugated
Immunogen	A synthesized peptide derived from human ABL2
Format	Affinity purified monoclonal antibody supplied in PBS with 0.01% sodium azide and 50% glycerol, pH 7.3.
Storage	Shipped on wet ice. Store at -20°C. Stable for 24 months from date of receipt. Aliquoting is unnecessary for -20°C storage.
Precautions	Anti-ABL2 Rabbit mAb [65K48M09] is for research use only and not for use in diagnostic or therapeutic procedures.

Protein Information

Synonyms	Abelson murine leukemia viral oncogene homolog 2, Abelson related gene protein, Abelson tyrosine-protein kinase 2, Abelson-related gene protein, ABL2, ABL2_HUMAN, ABLL, ARG, Tyrosine kinase ARG, Tyrosine protein kinase ABL2, Tyrosine-protein kinase ARG, v abl Abelson murine leukemia viral oncogene homolog 2.
Calculated MW	Calculated MW: 128 kDa; Observed MW: 128 kDa
Uniprot ID	P42684
Gene ID	27
Background	This gene encodes a member of the Abelson family of nonreceptor tyrosine protein kinases. The protein is highly similar to the c-abl oncogene 1 protein, including the tyrosine kinase, SH2 and SH3 domains, and it plays a role in cytoskeletal rearrangements through its C-terminal F-actin- and microtubule-binding sequences. This gene is expressed in both normal and tumor cells, and is involved in translocation with the ets variant 6 gene in leukemia. Multiple alternatively spliced transcript variants encoding different protein isoforms have been found for this gene. [provided by RefSeq, Nov 2009]
Cellular Location	Cytoplasm, cytoskeleton.
Tissue Location	Widely expressed.



Western Blot - Anti-ABL2 Rabbit mAb [65K48M09]

All lanes: R015156 at 1:3,000 dilution

Lane 1: HeLa (Human cervix adenocarcinoma epithelial cell) whole cell lysates

Lane 2: HepG2 (Human hepatocarcinoma epithelial cell) whole cell lysates

Lane 3: HCT116 (Human colorectal carcinoma epithelial cell) whole cell lysates

Lane 4: U2OS (Human osteosarcoma epithelial cell) whole cell lysates

Lane 5: Caco2 (Human colorectal adenocarcinoma epithelial cell) whole cell lysates

Lane 6: Jurkat (Human T lymphocytic leukemia cell) whole cell lysates

Lane 7: Raw264.7 (Mouse mononuclear macrophage leukemia cell) whole cell lysates

Lane 8: PC-12 (Rat adrenal pheochromocytoma epithelial cell) whole cell lysates

Lysates/proteins at 10 µg per lane.

Secondary antibody: Goat Anti-Rabbit IgG (H+L), HRP Conjugated (Cat. No. LF102) at

1:5,000 dilution

Predicted band size: 128 kDa

Observed band size: 128 kDa

Developed using the ECL technique (Cat. No. SQ201).