

Anti-Fibrinogen alpha chain Rabbit mAb

Purified Recombinant Rabbit Monoclonal Antibody

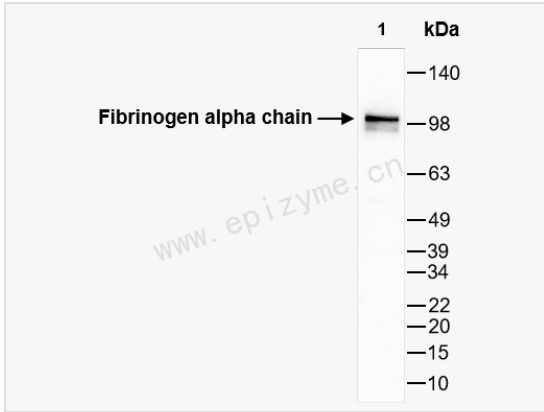
Catalog # R015053

Product Information

Application	WB, IHC-P/IF (Tissue-P), IF (Cell)/ICC, ELISA
Reactivity	Human
Dilution	WB 1:1,000~1:2,000; IHC-P 1:100~1:200; IF 1:100~1:200
Host	Rabbit
Clonality	Monoclonal
Clone No.	68H05F31
Isotype	IgG
Label	Unconjugated
Immunogen	A synthesized peptide derived from human Fibrinogen alpha chain
Format	Affinity purified monoclonal antibody supplied in PBS with 0.01% sodium azide and 50% glycerol, pH 7.3.
Storage	Shipped on wet ice. Store at -20°C. Stable for 24 months from date of receipt. Aliquoting is unnecessary for -20°C storage.
Precautions	Anti-Fibrinogen alpha chain Rabbit mAb [68H05F31] is for research use only and not for use in diagnostic or therapeutic procedures.

Protein Information

Synonyms	Ac1873, Fba5e, FGA, Fib, Fib2, FIBA_HUMAN, Fibrinogen alpha chain, Fibrinogen, A alpha polypeptide, Fibrinogen--alpha polypeptide chain, Fibrinopeptide A.
Calculated MW	Calculated MW: 95 kDa; Observed MW: 110 kDa
Uniprot ID	P02671
Gene ID	2243
Background	This gene encodes the alpha subunit of the coagulation factor fibrinogen, which is a component of the blood clot. Following vascular injury, the encoded preproprotein is proteolytically processed by thrombin during the conversion of fibrinogen to fibrin. Mutations in this gene lead to several disorders, including dysfibrinogenemia, hypofibrinogenemia, afibrinogenemia and renal amyloidosis. Alternative splicing results in multiple transcript variants, at least one of which encodes an isoform that undergoes proteolytic processing. [provided by RefSeq, Jan 2016]
Cellular Location	Secreted.
Tissue Location	Plasma.



Western Blot - Anti-Fibrinogen alpha chain Rabbit mAb [68H05F31]

All lanes: R015053 at 1:1,000 dilution

Lane 1 : HepG2 (Human hepatocarcinoma epithelial cell) whole cell lysates

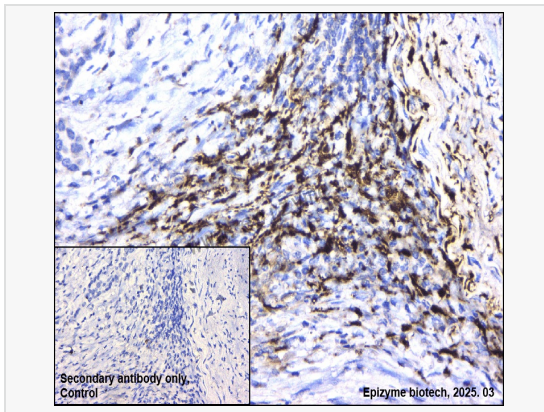
Lysates/proteins at 10 µg per lane.

Secondary antibody: Goat Anti-Rabbit IgG (H+L), HRP Conjugated (Cat. No. LF102) at 1:5,000 dilution

Predicted band size: 95 kDa

Observed band size: 110 kDa

Developed using the ECL technique (Cat. No. SQ201).



Immunohistochemistry - Anti-Fibrinogen alpha chain Rabbit mAb [68H05F31]

Sample: Paraformaldehyde-fixed, paraffin embedded human lung cancer tissue

Heat mediated antigen retrieval with Tris-EDTA buffer (pH 9.0) for 30 mins.

Primary antibody: R015053 at 1:200 dilution

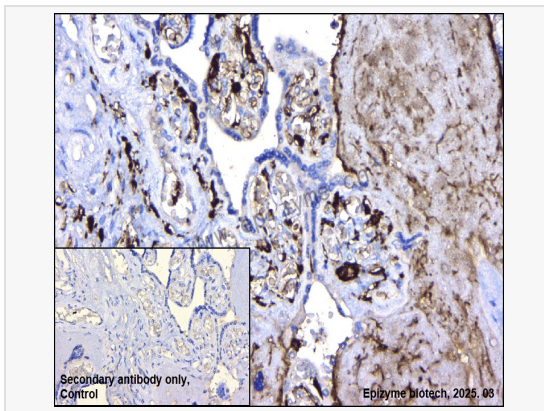
Secondary antibody: Goat Anti-Rabbit IgG (H+L), HRP conjugated at 1:1,000 dilution

DAB was used as the chromogen.

Counter stained with hematoxylin.

Positive/negative staining were presented.

Only the secondary antibody was used as the negative control.



Immunohistochemistry - Anti-Fibrinogen alpha chain Rabbit mAb [68H05F31]

Sample: Paraformaldehyde-fixed, paraffin embedded human placenta tissue

Heat mediated antigen retrieval with Tris-EDTA buffer (pH 9.0) for 30 mins.

Primary antibody: R015053 at 1:200 dilution

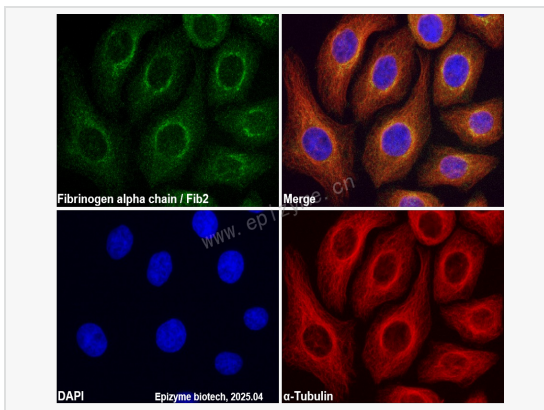
Secondary antibody: Goat Anti-Rabbit IgG (H+L), HRP conjugated at 1:1,000 dilution

DAB was used as the chromogen.

Counter stained with hematoxylin.

Positive/negative staining were presented.

Only the secondary antibody was used as the negative control.



Immunofluorescence - Anti-Fibrinogen alpha chain Rabbit mAb [68H05F31]

Sample: HeLa cells

The cells were fixed with 4% paraformaldehyde (10 min), permeabilized with 0.5% Triton X-100 for 10 minutes and then blocked with 5% BSA in 0.1% PBS-Tween for 0.5 hours.

Primary antibodies: R015053 at 1:100 dilution and α-tubulin Mouse Monoclonal Antibody (Cat. No. LF209) at 1:100 dilution

Secondary antibodies: Goat anti-Rabbit (488) at 1:1,000 dilution (shown in green) and Goat anti-Mouse (555) at 1:1,000 dilution (shown in red)

Nuclei were stained with DAPI (shown in blue).