

## Anti-APPL Rabbit mAb

Purified Recombinant Rabbit Monoclonal Antibody

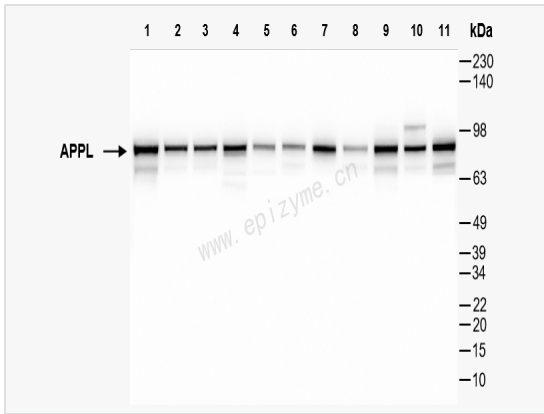
Catalog # R015040

### Product Information

Application	WB, IHC-P/IF (Tissue-P), ELISA
Reactivity	Human, Mouse, Rat
Dilution	WB 1:1,000~1:2,000; IHC-P 1:100~1:200; IF 1:100~1:200
Host	Rabbit
Clonality	Monoclonal
Clone No.	36G47Q69
Isotype	IgG
Label	Unconjugated
Immunogen	A synthesized peptide derived from human APPL
Format	Affinity purified monoclonal antibody supplied in PBS with 0.01% sodium azide and 50% glycerol, pH 7.3.
Storage	Shipped on wet ice. Store at -20°C. Stable for 24 months from date of receipt. Aliquoting is unnecessary for -20°C storage.
Precautions	Anti-APPL Rabbit mAb [36G47Q69] is for research use only and not for use in diagnostic or therapeutic procedures.

### Protein Information

Synonyms	Adapter protein containing PH domain, Adaptor Protein Containing pH Domain, Adaptor protein containing pH domain PTB domain and leucine zipper motif 1, Adaptor protein containing pH domain PTB domain and leucine zipper motif, Adaptor protein phosphotyrosine interacting with PH domain and leucine zipper 1, AKT2 INTERACTOR, APPL 1, App11, DCC interacting protein 13 alpha, DCC-interacting protein 13-alpha, DIP 13 alpha, DIP13 alpha, Dip13-alpha, DIP13alpha, DP13A_HUMAN, KIAA1428, PTB domain and leucine zipper motif 1, PTB Domain and Leucine Zipper Motif, Signaling adaptor protein DIP13alpha.
Calculated MW	Calculated MW: 80 kDa; Observed MW: 85 kDa
Uniprot ID	Q9UKG1
Gene ID	26060
Background	The protein encoded by this gene has been shown to be involved in the regulation of cell proliferation, and in the crosstalk between the adiponectin signalling and insulin signalling pathways. The encoded protein binds many other proteins, including RAB5A, DCC, AKT2, PIK3CA, adiponectin receptors, and proteins of the NuRD/MeCP1 complex. This protein is found associated with endosomal membranes, but can be released by EGF and translocated to the nucleus. [provided by RefSeq, Jul 2008]
Cellular Location	Early endosome membrane. Nucleus. Early endosomal membrane-bound and nuclear. Translocated into the nucleus upon release from endosomal membranes following internalization of EGF.
Tissue Location	High levels in heart, ovary, pancreas and skeletal muscle.



Western Blot - Anti-APPL Rabbit mAb [36G47Q69]

All lanes: R015040 at 1:1,000 dilution

Lane 1 : HeLa (Human cervix adenocarcinoma epithelial cell) whole cell lysates

Lane 2 : HepG2 (Human hepatocarcinoma epithelial cell) whole cell lysates

Lane 3 : HCT116 (Human colorectal carcinoma epithelial cell) whole cell lysates

Lane 4 : SW620 (Human colorectal carcinoma epithelial cell) whole cell lysates

Lane 5 : Caco2 (Human colorectal adenocarcinoma epithelial cell) whole cell lysates

Lane 6 : Jurkat (Human T lymphocytic leukemia cell) whole cell lysates

Lane 7 : 293T (Human embryonic kidney cell) whole cell lysates

Lane 8 : SCC-9 (Human tongue squamous carcinoma epithelial cell) whole cell lysates

Lane 9 : C2C12 (Mouse myoblasts epithelial cell) whole cell lysates

Lane 10 : Raw264.7 (Mouse mononuclear macrophage leukemia cell) whole cell lysates

Lane 11 : PC-12 (Rat adrenal pheochromocytoma epithelial cell) whole cell lysates

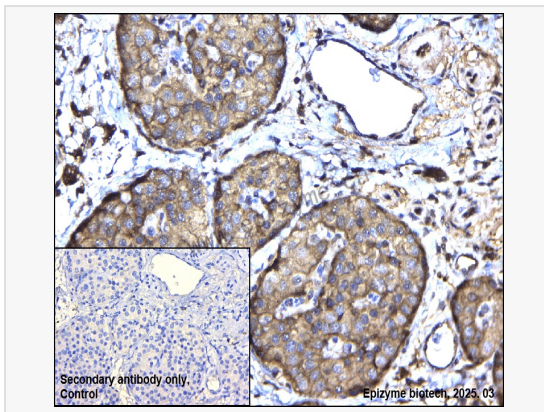
Lysates/proteins at 10 µg per lane.

Secondary antibody: Goat Anti-Rabbit IgG (H+L), HRP Conjugated (Cat. No. LF102) at 1:5,000 dilution

Predicted band size: 80 kDa

Observed band size: 85 kDa

Developed using the ECL technique (Cat. No. SQ201).



Immunohistochemistry - Anti-APPL Rabbit mAb [36G47Q69]

Sample: Paraformaldehyde-fixed, paraffin embedded human pancreatic cancer tissue

Heat mediated antigen retrieval with Tris-EDTA buffer (pH 9.0) for 30 mins.

Primary antibody: R015040 at 1:200 dilution

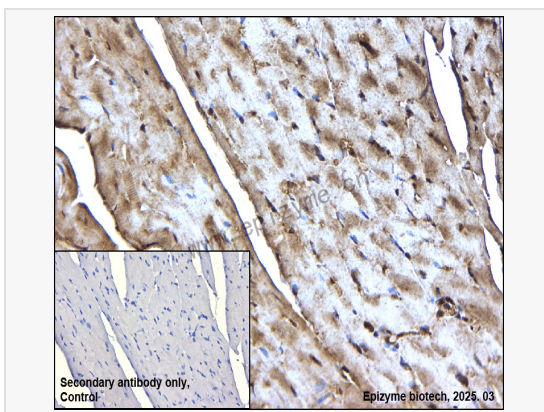
Secondary antibody: Goat Anti-Rabbit IgG (H+L), HRP conjugated at 1:1,000 dilution

DAB was used as the chromogen.

Counter stained with hematoxylin.

Positive/negative staining were presented.

Only the secondary antibody was used as the negative control.



Immunohistochemistry - Anti-APPL Rabbit mAb [36G47Q69]

Sample: Paraformaldehyde-fixed, paraffin embedded mouse heart tissue

Heat mediated antigen retrieval with Tris-EDTA buffer (pH 9.0) for 30 mins.

Primary antibody: R015040 at 1:200 dilution

Secondary antibody: Goat Anti-Rabbit IgG (H+L), HRP conjugated at 1:1,000 dilution

DAB was used as the chromogen.

Counter stained with hematoxylin.

Positive/negative staining were presented.

Only the secondary antibody was used as the negative control.