

Anti-Rab4 Rabbit mAb

Purified Recombinant Rabbit Monoclonal Antibody

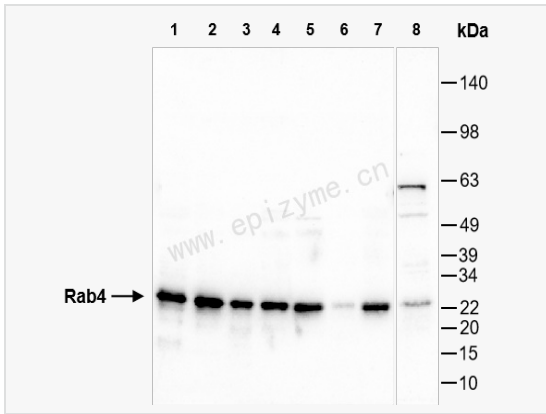
Catalog # R015035

Product Information

Application	WB, IHC-P/IF (Tissue-P), IF (Cell)/ICC, ELISA
Reactivity	Human, Mouse, Rat
Dilution	WB 1:1,000~1:2,000; IHC-P 1:100~1:200; IF 1:100~1:200
Host	Rabbit
Clonality	Monoclonal
Clone No.	42R09G23
Isotype	IgG
Label	Unconjugated
Immunogen	A synthesized peptide derived from human Rab4
Format	Affinity purified monoclonal antibody supplied in PBS with 0.01% sodium azide and 50% glycerol, pH 7.3.
Storage	Shipped on wet ice. Store at -20°C. Stable for 24 months from date of receipt. Aliquoting is unnecessary for -20°C storage.
Precautions	Anti-Rab4 Rabbit mAb [42R09G23] is for research use only and not for use in diagnostic or therapeutic procedures.

Protein Information

Synonyms	HRES 1/RAB4, Oncogene RAB4, OTTHUMP00000042824, Rab 4, RAB 4A, RAB4 member RAS oncogene family, RAB4A, RAB4A member RAS oncogene family, RAB4A_HUMAN, Ras related protein Rab 4A, Ras related protein Rab4A, Ras-related protein Rab-4A.
Calculated MW	Calculated MW: 24 kDa; Observed MW: 24 kDa
Uniprot ID	P20338
Gene ID	5867
Background	This gene is a member of the largest group in the Ras superfamily of small GTPases, which regulate membrane trafficking. The encoded protein is associated with early endosomes and is involved in their sorting and recycling. The protein also plays a role in regulating the recycling of receptors from endosomes to the plasma membrane. Alternatively spliced transcript variants have been observed for this gene. [provided by RefSeq, Dec 2012]
Cellular Location	Membrane, Peripheral membrane protein. Cytoplasm. Note=Generally associated with membranes. Cytoplasmic when phosphorylated by CDK1.



Western Blot - Anti-Rab4 Rabbit mAb [42R09G23]

All lanes: R015035 at 1:1,000 dilution

Lane 1 : HeLa (Human cervix adenocarcinoma epithelial cell) whole cell lysates

Lane 2 : HepG2 (Human hepatocarcinoma epithelial cell) whole cell lysates

Lane 3 : HCT116 (Human colorectal carcinoma epithelial cell) whole cell lysates

Lane 4 : SW620 (Human colorectal carcinoma epithelial cell) whole cell lysates

Lane 5 : Caco2 (Human colorectal adenocarcinoma epithelial cell) whole cell lysates

Lane 6 : Jurkat (Human T lymphocytic leukemia cell) whole cell lysates

Lane 7 : 293T (Human embryonic kidney cell) whole cell lysates

Lane 8 : PC-12 (Rat adrenal pheochromocytoma epithelial cell) whole cell lysates

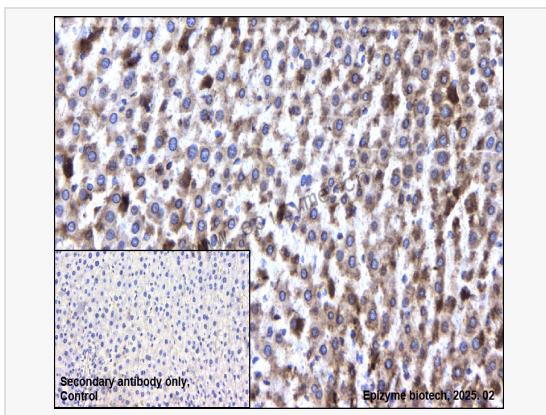
Lysates/proteins at 10 µg per lane.

Secondary antibody: Goat Anti-Rabbit IgG (H+L), HRP Conjugated (Cat. No. LF102) at 1:5,000 dilution

Predicted band size: 24 kDa

Observed band size: 24 kDa

Developed using the ECL technique (Cat. No. SQ201).



Immunohistochemistry - Anti-Rab4 Rabbit mAb [42R09G23]

Sample: Paraformaldehyde-fixed, paraffin embedded rat liver tissue

Heat mediated antigen retrieval with Tris-EDTA buffer (pH 9.0) for 30 mins.

Primary antibody: R015035 at 1:200 dilution

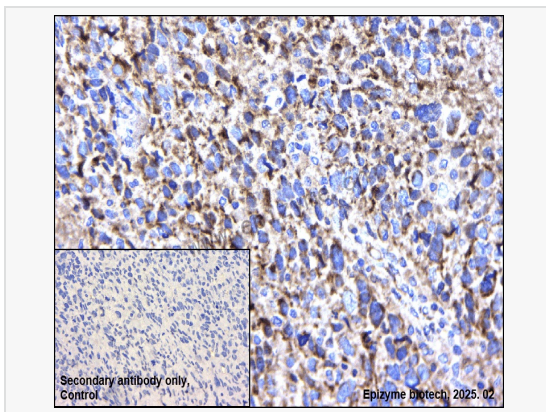
Secondary antibody: Goat Anti-Rabbit IgG (H+L), HRP conjugated at 1:1,000 dilution

DAB was used as the chromogen.

Counter stained with hematoxylin.

Positive/negative staining were presented.

Only the secondary antibody was used as the negative control.



Immunohistochemistry - Anti-Rab4 Rabbit mAb [42R09G23]

Sample: Paraformaldehyde-fixed, paraffin embedded human endometrial carcinoma tissue

Heat mediated antigen retrieval with Tris-EDTA buffer (pH 9.0) for 30 mins.

Primary antibody: R015035 at 1:200 dilution

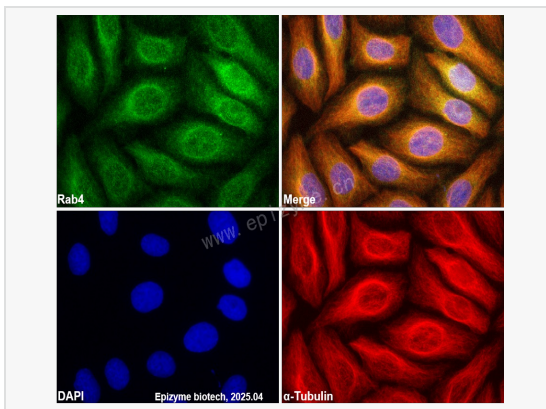
Secondary antibody: Goat Anti-Rabbit IgG (H+L), HRP conjugated at 1:1,000 dilution

DAB was used as the chromogen.

Counter stained with hematoxylin.

Positive/negative staining were presented.

Only the secondary antibody was used as the negative control.



Immunofluorescence - Anti-Rab4 Rabbit mAb [42R09G23]

Sample: HeLa cells

The cells were fixed with 4% paraformaldehyde (10 min), permeabilized with 0.5% Triton X-100 for 10 minutes and then blocked with 5% BSA in 0.1% PBS-Tween for 0.5 hours.

Primary antibodies: R015035 at 1:100 dilution and α -tubulin Mouse Monoclonal Antibody (Cat. No. LF209) at 1:100 dilution

Secondary antibodies: Goat anti-Rabbit (488) at 1:1,000 dilution (shown in green) and Goat anti-Mouse (555) at 1:1,000 dilution (shown in red)

Nuclei were stained with DAPI (shown in blue).