

Anti-Phospho-c-Jun (Ser73)/JunD (Ser100) Rabbit mAb

Purified Recombinant Rabbit Monoclonal Antibody

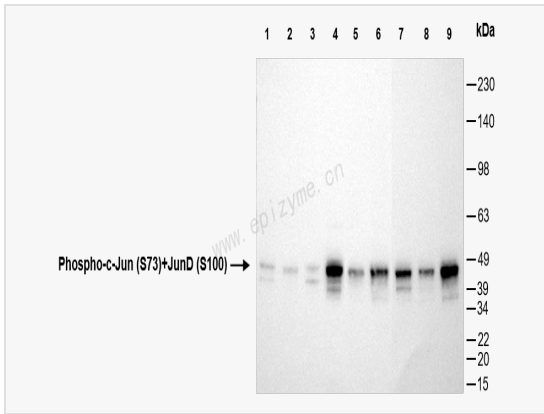
Catalog # R015020

Product Information

Application	WB, IHC-P/IF (Tissue-P), IF (Cell)/ICC, ELISA
Reactivity	Human, Mouse, Rat
Dilution	WB 1:1,000~1:2,000; IHC-P 1:100~1:200; IF 1:100~1:200
Host	Rabbit
Clonality	Monoclonal
Clone No.	15B01H06
Isotype	IgG
Label	Unconjugated
Immunogen	A synthesized peptide derived from human Phospho-c-Jun (S73)+JunD (S100)
Format	Affinity purified monoclonal antibody supplied in PBS with 0.01% sodium azide and 50% glycerol, pH 7.3.
Storage	Shipped on wet ice. Store at -20°C. Stable for 24 months from date of receipt. Aliquoting is unnecessary for -20°C storage.
Precautions	Anti-Phospho-c-Jun (Ser73)/JunD (Ser100) Rabbit mAb [15B01H06] is for research use only and not for use in diagnostic or therapeutic procedures.

Protein Information

Synonyms	Activator protein 1, AP 1, AP-1, AP1, cJun, Enhancer Binding Protein AP1, Jun Activation Domain Binding Protein, JUN, Jun oncogene, JUN protein, Jun proto oncogene, JUN_HUMAN, JUNC, Oncogene JUN, p39, Proto oncogene c jun, Proto oncogene cJun, Proto-oncogene c-jun, Transcription Factor AP 1, Transcription factor AP-1, Transcription Factor AP1, V jun avian sarcoma virus 17 oncogene homolog, V jun sarcoma virus 17 oncogene homolog (avian), V jun sarcoma virus 17 oncogene homolog, V-jun avian sarcoma virus 17 oncogene homolog, vJun Avian Sarcoma Virus 17 Oncogene Homolog.
Calculated MW	Calculated MW: 36 kDa; Observed MW: 45 kDa
Uniprot ID	P05412, P17535
Gene ID	3725, 3727
Background	This gene is the putative transforming gene of avian sarcoma virus 17. It encodes a protein which is highly similar to the viral protein, and which interacts directly with specific target DNA sequences to regulate gene expression. This gene is intronless and is mapped to 1p32-p31, a chromosomal region involved in both translocations and deletions in human malignancies. [provided by RefSeq, Jul 2008]
Cellular Location	JunD: Nucleus. c-Jun: Nucleus.



Western Blot - Anti-Phospho-c-Jun (Ser73) /JunD (Ser100) Rabbit mAb [15B01H06]

All lanes: R015020 at 1:1,000 dilution

- Lane 1 : HeLa (Human cervix adenocarcinoma epithelial cell) whole cell lysates
- Lane 2 : HepG2 (Human hepatocarcinoma epithelial cell) whole cell lysates
- Lane 3 : HCT116 (Human colorectal carcinoma epithelial cell) whole cell lysates
- Lane 4 : SW620 (Human colorectal carcinoma epithelial cell) whole cell lysates
- Lane 5 : 293T (Human embryonic kidney cell) whole cell lysates
- Lane 6 : SCC-9 (Human tongue squamous carcinoma epithelial cell) whole cell lysates
- Lane 7 : C2C12 (Mouse myoblasts epithelial cell) whole cell lysates
- Lane 8 : Raw264.7 (Mouse mononuclear macrophage leukemia cell) whole cell lysates
- Lane 9 : PC-12 (Rat adrenal pheochromocytoma epithelial cell) whole cell lysates

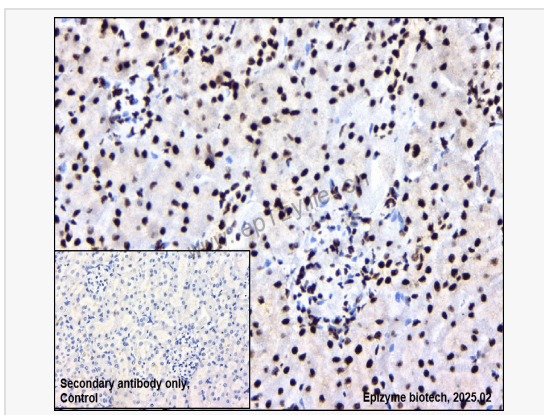
Lysates/proteins at 10 µg per lane.

Secondary antibody: Goat Anti-Rabbit IgG (H+L), HRP Conjugated (Cat. No. LF102) at 1:5,000 dilution

Predicted band size: 36 kDa

Observed band size: 36 kDa

Developed using the ECL technique (Cat. No. SQ201).



Immunohistochemistry - Anti-Phospho-c-Jun (Ser73) /JunD (Ser100) Rabbit mAb [15B01H06]

Sample: Paraformaldehyde-fixed, paraffin embedded rat kidney tissue

Heat mediated antigen retrieval with Tris-EDTA buffer (pH 9.0) for 30 mins.

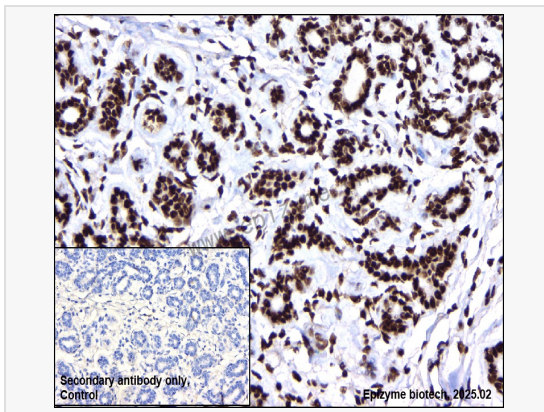
Primary antibody: R015020 at 1:200 dilution

Secondary antibody: Goat Anti-Rabbit IgG (H+L), HRP conjugated at 1:1,000 dilution
DAB was used as the chromogen.

Counter stained with hematoxylin.

Positive/negative staining were presented.

Only the secondary antibody was used as the negative control.



Immunohistochemistry - Anti-Phospho-c-Jun (Ser73) /JunD (Ser100) Rabbit mAb [15B01H06]

Sample: Paraformaldehyde-fixed, paraffin embedded human breast cancer tissue

Heat mediated antigen retrieval with Tris-EDTA buffer (pH 9.0) for 30 mins.

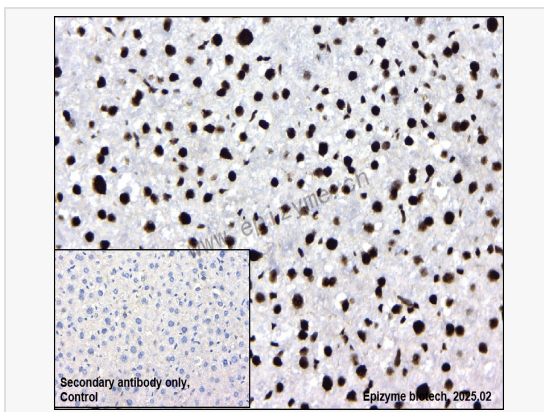
Primary antibody: R015020 at 1:200 dilution

Secondary antibody: Goat Anti-Rabbit IgG (H+L), HRP conjugated at 1:1,000 dilution
DAB was used as the chromogen.

Counter stained with hematoxylin.

Positive/negative staining were presented.

Only the secondary antibody was used as the negative control.



Immunohistochemistry - Anti-Phospho-c-Jun (Ser73) /JunD (Ser100) Rabbit mAb [15B01H06]

Sample: Paraformaldehyde-fixed, paraffin embedded mouse liver tissue

Heat mediated antigen retrieval with Tris-EDTA buffer (pH 9.0) for 30 mins.

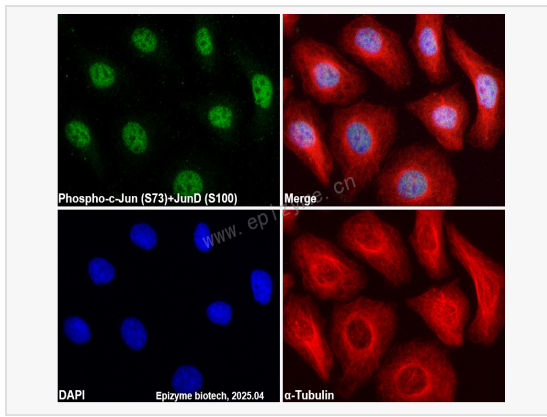
Primary antibody: R015020 at 1:200 dilution

Secondary antibody: Goat Anti-Rabbit IgG (H+L), HRP conjugated at 1:1,000 dilution
DAB was used as the chromogen.

Counter stained with hematoxylin.

Positive/negative staining were presented.

Only the secondary antibody was used as the negative control.



Immunofluorescence - Anti-Phospho-c-Jun (Ser73) /JunD (Ser100) Rabbit mAb [15B01H06]

Sample: HeLa cells

The cells were fixed with 4% paraformaldehyde (10 min), permeabilized with 0.5% Triton X-100 for 10 minutes and then blocked with 5% BSA in 0.1% PBS-Tween for 0.5 hours.

Primary antibodies: R015020 at 1:100 dilution and α -tubulin Mouse Monoclonal Antibody (Cat. No. LF209) at 1:100 dilution

Secondary antibodies: Goat anti-Rabbit (488) at 1:1,000 dilution (shown in green) and Goat anti-Mouse (555) at 1:1,000 dilution (shown in red)

Nuclei were stained with DAPI (shown in blue).