

## Anti-RAB7 Rabbit mAb

Purified Recombinant Rabbit Monoclonal Antibody

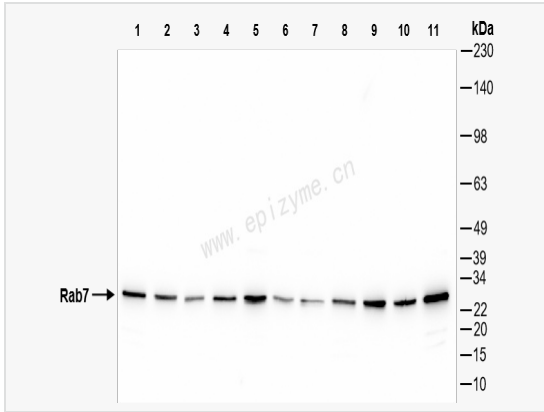
Catalog # R014986

### Product Information

Application	WB, IHC-P/IF (Tissue-P), IF (Cell)/ICC, ELISA
Reactivity	Human, Mouse, Rat
Dilution	WB 1:1,000~1:5,000; IHC-P 1:200~1:1,000; IF 1:200~1:1,000
Host	Rabbit
Clonality	Monoclonal
Clone No.	75K01T16
Isotype	IgG
Label	Unconjugated
Immunogen	Recombinant protein of human RAB7
Format	Affinity purified monoclonal antibody supplied in PBS with 0.01% sodium azide and 50% glycerol, pH 7.3.
Storage	Shipped on wet ice. Store at -20°C. Stable for 24 months from date of receipt. Aliquoting is unnecessary for -20°C storage.
Precautions	Anti-RAB7 Rabbit mAb [75K01T16] is for research use only and not for use in diagnostic or therapeutic procedures.

### Protein Information

Synonyms	CMT2B, PRO2706, PSN, RAB7, member RAS oncogene family, RAB7A, RAB7A, member RAS oncogene family, RAB7A_HUMAN, Ras associated protein RAB7, Ras related protein Rab7, Ras related protein Rab7a, Ras-related protein Rab-7a.
Calculated MW	Calculated MW: 24 kDa; Observed MW: 24 kDa
Uniprot ID	P51149
Gene ID	7879
Background	RAB family members are small, RAS-related GTP-binding proteins that are important regulators of vesicular transport. Each RAB protein targets multiple proteins that act in exocytic / endocytic pathways. This gene encodes a RAB family member that regulates vesicle traffic in the late endosomes and also from late endosomes to lysosomes. This encoded protein is also involved in the cellular vacuolation of the VacA cytotoxin of Helicobacter pylori. Mutations at highly conserved amino acid residues in this gene have caused some forms of Charcot-Marie-Tooth (CMT) type 2 neuropathies. [provided by RefSeq, Jul 2008]
Cellular Location	Late endosome. Lysosome. Cytoplasmic vesicle > phagosome. Melanosome. Cytoplasmic vesicle > phagosome membrane. Co-localizes with OSBPL1A at the late endosome. Found in the ruffled border (a late endosomal-like compartment in the plasma membrane) of bone-resorbing osteoclasts. Recruited to phagosomes containing S.aureus or Mycobacterium.
Tissue Location	Widely expressed; high expression found in skeletal muscle.



Western Blot - Anti-RAB7 Rabbit mAb [75K01T16]

All lanes: R014986 at 1:3,000 dilution

Lane 1: HeLa (Human cervix adenocarcinoma epithelial cell) whole cell lysates

Lane 2: HepG2 (Human hepatocarcinoma epithelial cell) whole cell lysates

Lane 3: HCT116 (Human colorectal carcinoma epithelial cell) whole cell lysates

Lane 4: SW620 (Human colorectal carcinoma epithelial cell) whole cell lysates

Lane 5: Caco2 (Human colorectal adenocarcinoma epithelial cell) whole cell lysates

Lane 6: Jurkat (Human T lymphocytic leukemia cell) whole cell lysates

Lane 7: 293T (Human embryonic kidney cell) whole cell lysates

Lane 8: SCC-9 (Human tongue squamous carcinoma epithelial cell) whole cell lysates

Lane 9: C2C12 (Mouse myoblasts epithelial cell) whole cell lysates

Lane 10: Raw264.7 (Mouse mononuclear macrophage leukemia cell) whole cell lysates

Lane 11: PC-12 (Rat adrenal pheochromocytoma epithelial cell) whole cell lysates

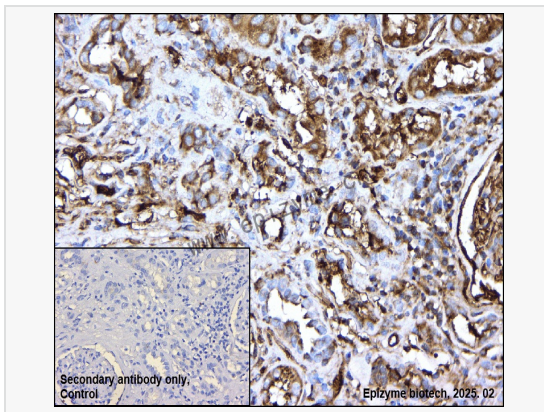
Lysates/proteins at 10 µg per lane.

Secondary antibody: Goat Anti-Rabbit IgG (H+L), HRP Conjugated (Cat. No. LF102) at 1:5,000 dilution

Predicted band size: 24 kDa

Observed band size: 24 kDa

Developed using the ECL technique (Cat. No. SQ201).



Immunohistochemistry - Anti-RAB7 Rabbit mAb [75K01T16]

Sample: Paraformaldehyde-fixed, paraffin embedded human renal carcinoma tissue

Heat mediated antigen retrieval with Tris-EDTA buffer (pH 9.0) for 30 mins.

Primary antibody: R014986 at 1:600 dilution

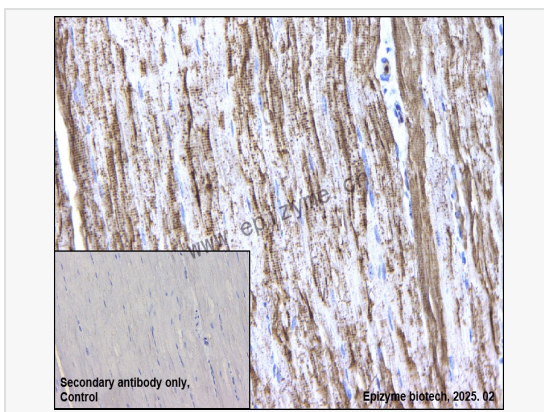
Secondary antibody: Goat Anti-Rabbit IgG (H+L), HRP conjugated at 1:1,000 dilution

DAB was used as the chromogen.

Counter stained with hematoxylin.

Positive/negative staining were presented.

Only the secondary antibody was used as the negative control.



Immunohistochemistry - Anti-RAB7 Rabbit mAb [75K01T16]

Sample: Paraformaldehyde-fixed, paraffin embedded mouse muscle tissue

Heat mediated antigen retrieval with Tris-EDTA buffer (pH 9.0) for 30 mins.

Primary antibody: R014986 at 1:600 dilution

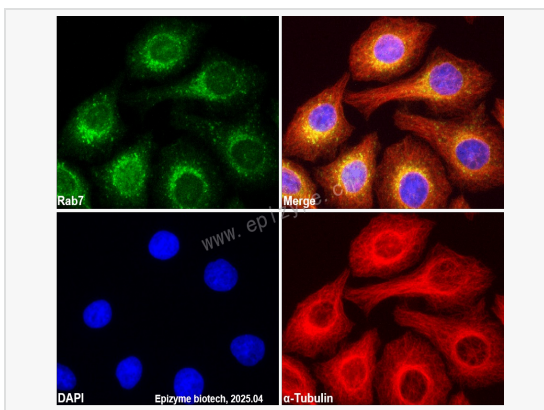
Secondary antibody: Goat Anti-Rabbit IgG (H+L), HRP conjugated at 1:1,000 dilution

DAB was used as the chromogen.

Counter stained with hematoxylin.

Positive/negative staining were presented.

Only the secondary antibody was used as the negative control.



Immunofluorescence - Anti-RAB7 Rabbit mAb [75K01T16]

Sample: HeLa cells

The cells were fixed with 4% paraformaldehyde (10 min), permeabilized with 0.5% Triton X-100 for 10 minutes and then blocked with 5% BSA in 0.1% PBS-Tween for 0.5 hours.

Primary antibodies: R014986 at 1:100 dilution and α-tubulin Mouse Monoclonal Antibody (Cat. No. LF209) at 1:100 dilution

Secondary antibodies: Goat anti-Rabbit (488) at 1:1,000 dilution (shown in green) and Goat anti-Mouse (555) at 1:1,000 dilution (shown in red)

Nuclei were stained with DAPI (shown in blue).

