

## Anti-CKII alpha Rabbit mAb

Purified Recombinant Rabbit Monoclonal Antibody

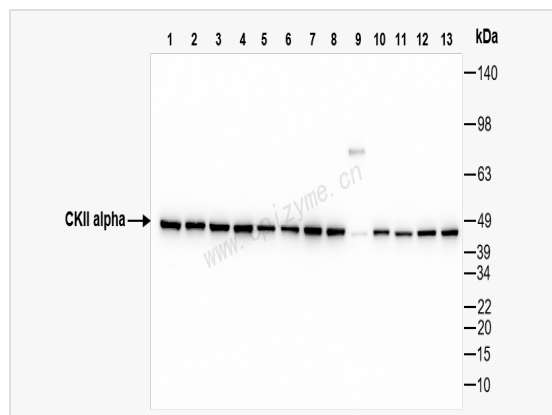
Catalog # R014945

### Product Information

Application	WB, IHC-P/IF (Tissue-P)ELISA
Reactivity	Human, Mouse, Rat
Dilution	WB 1:1,000~1:2,000; IHC-P 1:100~1:200; IF 1:100~1:200
Host	Rabbit
Clonality	Monoclonal
Clone No.	84I13J89
Isotype	IgG
Label	Unconjugated
Immunogen	A synthesized peptide derived from human CKII alpha
Format	Affinity purified monoclonal antibody supplied in PBS with 0.01% sodium azide and 50% glycerol, pH 7.3.
Storage	Shipped on wet ice. Store at -20°C. Stable for 24 months from date of receipt. Aliquoting is unnecessary for -20°C storage.
Precautions	Anti-CKII alpha Rabbit mAb [84I13J89] is for research use only and not for use in diagnostic or therapeutic procedures.

### Protein Information

Synonyms	STK, Casein kinase II alpha, CKII alpha, Serine/Threonine Protein Kinase II alpha, CKIIalpha, Casein kinase 2 alpha 1 polypeptide, Casein kinase II alpha 1 subunit, Casein kinase II alpha chain, Casein kinase II alpha subunit, Casein kinase II subunit alpha, Casein kinase II alpha 1, CK II alpha, CKIIalpha, CSK21_HUMAN, CK II, CK2 alpha, CK2 catalytic subunit alpha, CK2A1, CKII, CSNK2A1., CK2 $\alpha$ .
Calculated MW	Calculated MW: 45 kDa; Observed MW: 45 kDa
Uniprot ID	P68400
Gene ID	1457
Background	Casein kinase II is a serine/threonine protein kinase that phosphorylates acidic proteins such as casein. It is involved in various cellular processes, including cell cycle control, apoptosis, and circadian rhythm. The kinase exists as a tetramer and is composed of an alpha, an alpha-prime, and two beta subunits. The alpha subunits contain the catalytic activity while the beta subunits undergo autophosphorylation. The protein encoded by this gene represents the alpha subunit. Multiple transcript variants encoding different protein isoforms have been found for this gene. [provided by RefSeq, Apr 2018]



Western Blot - Anti-CKII alpha Rabbit mAb [84113J89]

All lanes: R014945 at 1:1,000 dilution

Lane 1: HeLa (Human cervix adenocarcinoma epithelial cell) whole cell lysates

Lane 2: HepG2 (Human hepatocarcinoma epithelial cell) whole cell lysates

Lane 3: HCT116 (Human colorectal carcinoma epithelial cell) whole cell lysates

Lane 4: SW620 (Human colorectal carcinoma epithelial cell) whole cell lysates

Lane 5: Caco2 (Human colorectal adenocarcinoma epithelial cell) whole cell lysates

Lane 6: Jurkat (Human T lymphocytic leukemia cell) whole cell lysates

Lane 7: 293T (Human embryonic kidney cell) whole cell lysates

Lane 8: SCC-9 (Human tongue squamous carcinoma epithelial cell) whole cell lysates

Lane 9: Mouse heart whole tissue lysates

Lane 10: Mouse brain whole tissue lysates

Lane 11: C2C12 (Mouse myoblasts epithelial cell) whole cell lysates

Lane 12: Raw264.7 (Mouse mononuclear macrophage leukemia cell) whole cell lysates

Lane 13: PC-12 (Rat adrenal pheochromocytoma epithelial cell) whole cell lysates

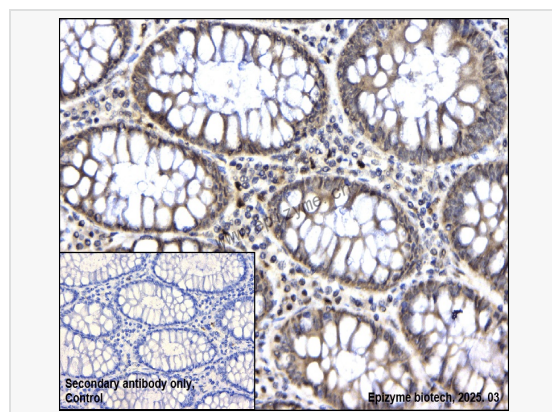
Lysates/proteins at 10 µg per lane.

Secondary antibody: Goat Anti-Rabbit IgG (H+L), HRP Conjugated (Cat. No. LF102) at 1:5,000 dilution

Predicted band size: 45 kDa

Observed band size: 45 kDa

Developed using the ECL technique (Cat. No. SQ201).



Immunohistochemistry - Anti-CKII alpha Rabbit mAb [84113J89]

Sample: Paraformaldehyde-fixed, paraffin embedded human colonic cancer tissue

Heat mediated antigen retrieval with Tris-EDTA buffer (pH 9.0) for 30 mins.

Primary antibody: R014945 at 1:200 dilution

Secondary antibody: Goat Anti-Rabbit IgG (H+L), HRP conjugated at 1:1,000 dilution

DAB was used as the chromogen.

Counter stained with hematoxylin.

Positive/negative staining were presented.

Only the secondary antibody was used as the negative control.