

Anti-PIM2 Rabbit mAb

Purified Recombinant Rabbit Monoclonal Antibody

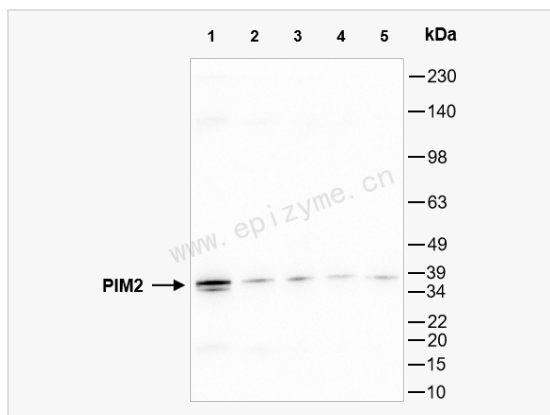
Catalog # R014892

Product Information

Application	WB, ELISA
Reactivity	Human
Dilution	WB 1:1,000~1:2,000
Host	Rabbit
Clonality	Monoclonal
Clone No.	44T32Q91
Isotype	IgG
Label	Unconjugated
Immunogen	A synthesized peptide derived from human PIM2
Format	Affinity purified monoclonal antibody supplied in PBS with 0.01% sodium azide and 50% glycerol, pH 7.3.
Storage	Shipped on wet ice. Store at -20°C. Stable for 24 months from date of receipt. Aliquoting is unnecessary for -20°C storage.
Precautions	Anti-PIM2 Rabbit mAb [44T32Q91] is for research use only and not for use in diagnostic or therapeutic procedures.

Protein Information

Synonyms	Anti-USP28 Rabbit mAb [71I89J58]Anti-Peroxiredoxin 1 Rabbit mAb [63E60P96]Anti-PDE4B Rabbit mAb [89HI7L79]Anti-PEF1 Rabbit mAb [18J38H64]Anti-Phospho-Bad (Ser112) Rabbit mAb [22A67Q16]Anti-PI3 Kinase p110 beta Rabbit mAb [87H21R26]Anti-PIM2 Rabbit mAb [44T32Q91]Anti-PNK/PNKP Rabbit mAb [55J65D38]Anti-PPCS Rabbit mAb [20M82R93]Anti-PPCEL/PREPL Rabbit mAb [89R87R95]Anti-TAF1 Rabbit mAb [36C31C00]Anti-mtTFA Rabbit mAb [89T49J31]Anti-TTF1/Nkx2-1 Rabbit mAb [84A21A77]Anti-WDR5 Rabbit mAb [25N63A63]Anti-Caspase 8 Rabbit mAb [57A97C50]Anti-TGIF Rabbit mAb [87N14C09]Anti-Ribosomal protein S10 Rabbit mAb [61N74P94]Anti-RPS20 Rabbit mAb [92M41L24]Anti-SESN1 Rabbit mAb [18T40M37]Anti-Syntenin Rabbit mAb [21B08N56]Anti-Villin Rabbit mAb [81R74C88]Anti-SCRIBBLE Rabbit mAb [60C60L13]Anti-ERG Rabbit mAb [42F53B17]Anti-Nectin-4 Rabbit mAb [92R96F84]Anti-Axin 2 Rabbit mAb [71L62L64]Anti-GGCT Rabbit mAb [63C89J81].
Calculated MW	Calculated MW: 34 kDa; Observed MW: 37 kDa
Uniprot ID	Q9P1W9
Gene ID	11040
Background	This gene encodes a protooncogene that acts as a serine/threonine protein kinase. Studies determined the encoded protein functions to prevent apoptosis and to promote cell survival.[provided by RefSeq, Nov 2009]
Tissue Location	Highly expressed in hematopoietic tissues, in leukemic and lymphoma cell lines, testis, small intestine, colon and colorectal adenocarcinoma cells. Weakly expressed in normal liver, but highly expressed in hepatocellular carcinoma tissues.



Western Blot - Anti-PIM2 Rabbit mAb [44T32Q91]

All lanes: R014892 at 1:1,000 dilution

Lane 1: HeLa (Human cervix adenocarcinoma epithelial cell) whole cell lysates

Lane 2: HepG2 (Human hepatocarcinoma epithelial cell) whole cell lysates

Lane 3: HCT116 (Human colorectal carcinoma epithelial cell) whole cell lysates

Lane 4: U2OS (Human osteosarcoma epithelial cell) whole cell lysates

Lane 5: 293T (Human embryonic kidney cell) whole cell lysates

Lysates/proteins at 10 μ g per lane.

Secondary antibody: Goat Anti-Rabbit IgG (H+L), HRP Conjugated (Cat. No. LF102) at 1:5,000 dilution

Predicted band size: 34 kDa

Observed band size: 37 kDa

Developed using the ECL technique (Cat. No. SQ201).