

## Anti-BBS1 Rabbit mAb

Purified Recombinant Rabbit Monoclonal Antibody

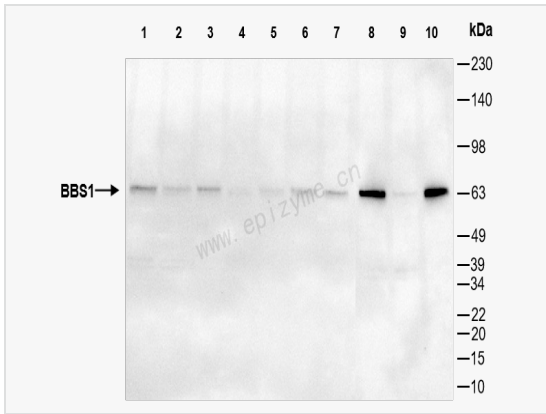
Catalog # R014838

### Product Information

Application	ELISA, WB, IHC-P/IF (Tissue-P), IF (Cell)/ICC
Reactivity	Human, Mouse, Rat
Dilution	WB 1:1,000~1:2,000; IHC-P 1:100~1:200; IF 1:100~1:200
Host	Rabbit
Clonality	Monoclonal
Clone No.	48L69P27
Isotype	IgG
Label	Unconjugated
Immunogen	A synthesized peptide derived from human BBS1
Format	Affinity purified monoclonal antibody supplied in PBS with 0.01% sodium azide and 50% glycerol, pH 7.3.
Storage	Shipped on wet ice. Store at -20°C. Stable for 24 months from date of receipt. Aliquoting is unnecessary for -20°C storage.
Precautions	Anti-BBS1 Rabbit mAb [48L69P27] is for research use only and not for use in diagnostic or therapeutic procedures.

### Protein Information

Synonyms	AI451249, Bardet-Biedl syndrome 1, Bardet-Biedl syndrome 1 homolog, Bardet-Biedl syndrome 1 protein, BBS1, BBS1_HUMAN, BBS2-like protein 2, BBS2L2, D19Ertd609e.
Calculated MW	Calculated MW: 65 kDa; Observed MW: 65 kDa
Uniprot ID	Q8NFJ9
Gene ID	582
Background	Mutations in this gene have been observed in patients with the major form (type 1) of Bardet-Biedl syndrome. The encoded protein may play a role in eye, limb, cardiac and reproductive system development. [provided by RefSeq, Jul 2008]
Cellular Location	Cell projection > cilium membrane. Cytoplasm. Localizes to nonmembranous centriolar satellites in the cytoplasm.
Tissue Location	Highly expressed in the kidney. Also found in fetal tissue, testis, retina, adipose tissue, heart, skeletal muscle and pancreas.



Western Blot - Anti-BBS1 Rabbit mAb [48L69P27]

All lanes: R014838 at 1:1,000 dilution

Lane 1: HeLa (Human cervix adenocarcinoma epithelial cell) whole cell lysates

Lane 2: HepG2 (Human hepatocarcinoma epithelial cell) whole cell lysates

Lane 3: HCT116 (Human colorectal carcinoma epithelial cell) whole cell lysates

Lane 4: U2OS (Human osteosarcoma epithelial cell) whole cell lysates

Lane 5: Caco2 (Human colorectal adenocarcinoma epithelial cell) whole cell lysates

Lane 6: Jurkat (Human T lymphocytic leukemia cell) whole cell lysates

Lane 7: 293T (Human embryonic kidney cell) whole cell lysates

Lane 8: C2C12 (Mouse myoblasts epithelial cell) whole cell lysates

Lane 9: Raw264.7 (Mouse mononuclear macrophage leukemia cell) whole cell lysates

Lane 10: PC-12 (Rat adrenal pheochromocytoma epithelial cell) whole cell lysates

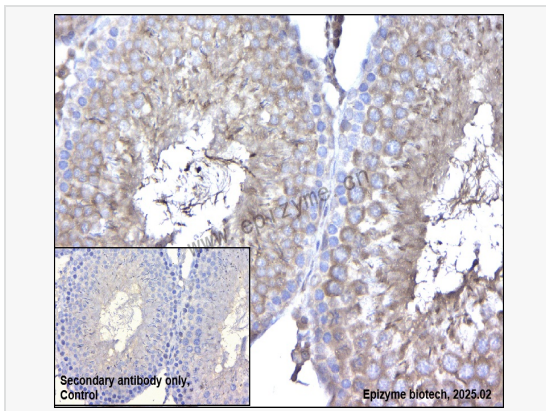
Lysates/proteins at 10 µg per lane.

Secondary antibody: Goat Anti-Rabbit IgG (H+L), HRP Conjugated (Cat. No. LF102) at 1:5,000 dilution

Predicted band size: 65 kDa

Observed band size: 65 kDa

Developed using the ECL technique (Cat. No. SQ201).



Immunohistochemistry - Anti-BBS1 Rabbit mAb [48L69P27]

Sample: Paraformaldehyde-fixed, paraffin embedded rat testis tissue

Heat mediated antigen retrieval with Tris-EDTA buffer (pH 9.0) for 30 mins.

Primary antibody: R014838 at 1:200 dilution

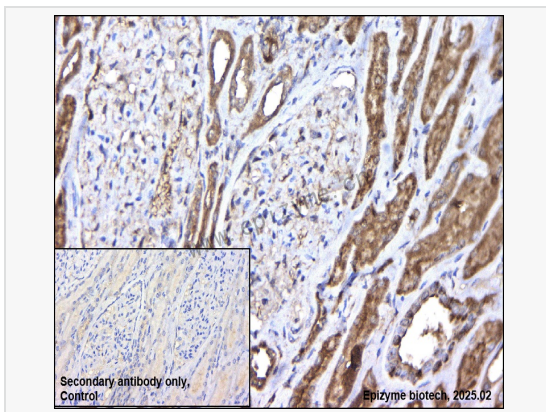
Secondary antibody: Goat Anti-Rabbit IgG (H+L), HRP conjugated at 1:1,000 dilution

DAB was used as the chromogen.

Counter stained with hematoxylin.

Positive/negative staining were presented.

Only the secondary antibody was used as the negative control.



Immunohistochemistry - Anti-BBS1 Rabbit mAb [48L69P27]

Sample: Paraformaldehyde-fixed, paraffin embedded human renal carcinoma tissue

Heat mediated antigen retrieval with Tris-EDTA buffer (pH 9.0) for 30 mins.

Primary antibody: R014838 at 1:200 dilution

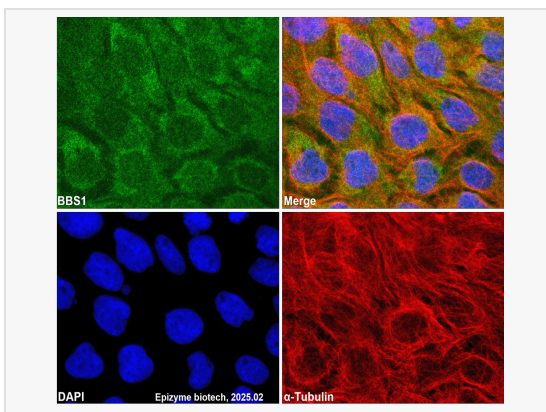
Secondary antibody: Goat Anti-Rabbit IgG (H+L), HRP conjugated at 1:1,000 dilution

DAB was used as the chromogen.

Counter stained with hematoxylin.

Positive/negative staining were presented.

Only the secondary antibody was used as the negative control.



Immunofluorescence - Anti-BBS1 Rabbit mAb [48L69P27]

Sample: A431 cells

The cells were fixed with 4% paraformaldehyde (10 min), permeabilized with 0.5% Triton X-100 for 10 minutes and then blocked with 5% BSA in 0.1% PBS-Tween for 0.5 hours.

Primary antibodies: R014838 at 1:100 dilution and  $\alpha$ -tubulin Mouse Monoclonal Antibody (Cat. No. LF209) at 1:100 dilution

Secondary antibodies: Goat anti-Rabbit (488) at 1:1,000 dilution (shown in green) and Goat anti-Mouse (555) at 1:1,000 dilution (shown in red)

Nuclei were stained with DAPI (shown in blue).