

## Anti-HMGCS2 Rabbit mAb

Purified Recombinant Rabbit Monoclonal Antibody

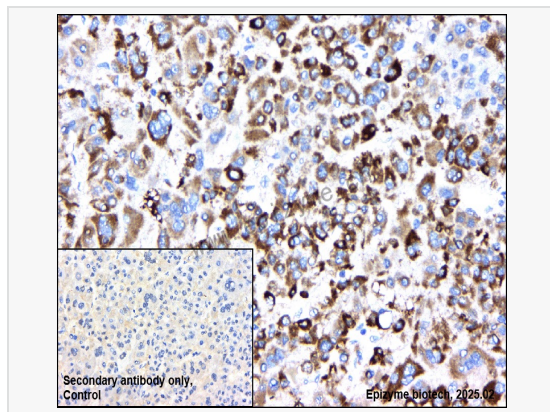
Catalog # R014812

### Product Information

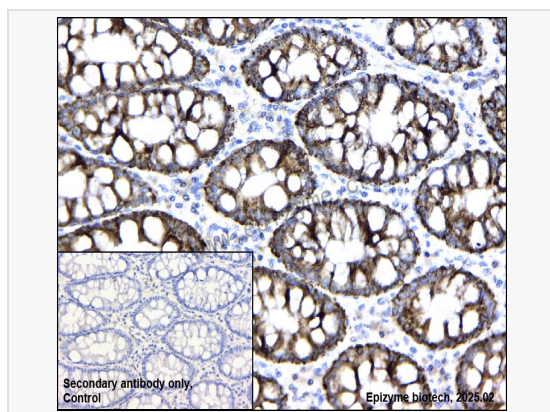
Application	WB, IHC-P/IF (Tissue-P), ELISA
Reactivity	Human
Dilution	WB 1:1,000~1:2,000; IHC-P 1:100~1:200; IF 1:100~1:200
Host	Rabbit
Clonality	Monoclonal
Clone No.	16L26A85
Isotype	IgG
Label	Unconjugated
Immunogen	A synthesized peptide derived from human HMGCS2
Format	Affinity purified monoclonal antibody supplied in PBS with 0.01% sodium azide and 50% glycerol, pH 7.3.
Storage	Shipped on wet ice. Store at -20°C. Stable for 24 months from date of receipt. Aliquoting is unnecessary for -20°C storage.
Precautions	Anti-HMGCS2 Rabbit mAb [16L26A85] is for research use only and not for use in diagnostic or therapeutic procedures.

### Protein Information

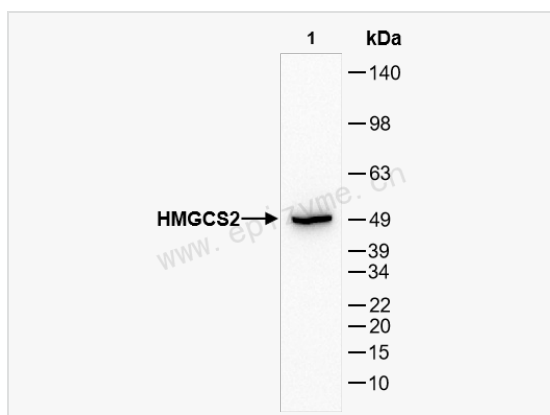
Synonyms	3 hydroxy 3 methylglutaryl Coenzyme A synthase 2 (mitochondrial), 3 hydroxy 3 methylglutaryl Coenzyme A synthase 2, 3 hydroxy 3 methylglutaryl coenzyme A synthase, 3-hydroxy-3-methylglutaryl coenzyme A synthase, HMCS2_HUMAN, HMG CoA synthase, HMG-CoA synthase, HMGCS 2, HMGCS2, Hydroxymethylglutaryl CoA synthase, Hydroxymethylglutaryl CoA synthase mitochondrial, Hydroxymethylglutaryl-CoA synthase, mitochondrial.
Calculated MW	Calculated MW: 57 kDa; Observed MW: 50 kDa
Uniprot ID	P54868
Gene ID	3158
Background	The protein encoded by this gene belongs to the HMG-CoA synthase family. It is a mitochondrial enzyme that catalyzes the first reaction of ketogenesis, a metabolic pathway that provides lipid-derived energy for various organs during times of carbohydrate deprivation, such as fasting. Mutations in this gene are associated with HMG-CoA synthase deficiency. Alternatively spliced transcript variants encoding different isoforms have been found for this gene.[provided by RefSeq, Oct 2009]
Cellular Location	Mitochondrion.
Tissue Location	High expression in liver and colon. Low expression in testis, heart, skeletal muscle and kidney.



Immunohistochemistry - Anti-HMGCS2 Rabbit mAb [16L26A85]  
 Sample: Paraformaldehyde-fixed, paraffin embedded human hepatoma tissue  
 Heat mediated antigen retrieval with Tris-EDTA buffer (pH 9.0) for 30 mins.  
 Primary antibody: R014812 at 1:200 dilution  
 Secondary antibody: Goat Anti-Rabbit IgG (H+L), HRP conjugated at 1:1,000 dilution  
 DAB was used as the chromogen.  
 Counter stained with hematoxylin.  
 Positive/negative staining were presented.  
 Only the secondary antibody was used as the negative control.



Immunohistochemistry - Anti-HMGCS2 Rabbit mAb [16L26A85]  
 Sample: Paraformaldehyde-fixed, paraffin embedded human colonic cancer tissue  
 Heat mediated antigen retrieval with Tris-EDTA buffer (pH 9.0) for 30 mins.  
 Primary antibody: R014812 at 1:200 dilution  
 Secondary antibody: Goat Anti-Rabbit IgG (H+L), HRP conjugated at 1:1,000 dilution  
 DAB was used as the chromogen.  
 Counter stained with hematoxylin.  
 Positive/negative staining were presented.  
 Only the secondary antibody was used as the negative control.



Western Blot - Anti-HMGCS2 Rabbit mAb [16L26A85]  
 All lanes: R014812 at 1:1,000 dilution  
 Lane 1: Caco2 (Human colorectal adenocarcinoma epithelial cell) whole cell lysates  
 Lysates/proteins at 10 µg per lane.  
 Secondary antibody: Goat Anti-Rabbit IgG (H+L), HRP Conjugated (Cat. No. LF102) at 1:5,000 dilution  
 Predicted band size: 57 kDa  
 Observed band size: 50 kDa  
 Developed using the ECL technique (Cat. No. SQ201).