

Anti-AP2M1 Rabbit mAb

Purified Recombinant Rabbit Monoclonal Antibody

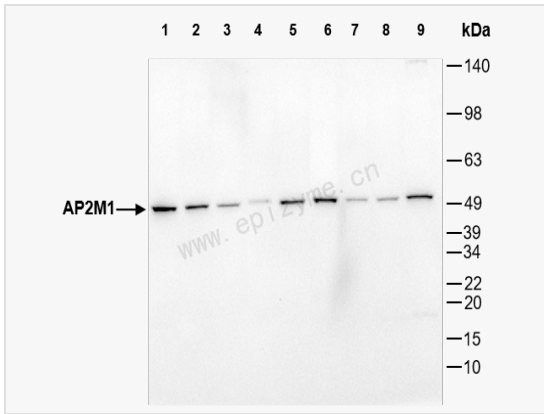
Catalog # R014774

Product Information

Application	WB, IHC-P/IF (Tissue-P), ELISA
Reactivity	Human, Mouse, Rat
Dilution	WB 1:1,000~1:2,000; IHC-P 1:100~1:200; IF 1:100~1:200
Host	Rabbit
Clonality	Monoclonal
Clone No.	86S95F85
Isotype	IgG
Label	Unconjugated
Immunogen	A synthesized peptide derived from human AP2M1
Format	Affinity purified monoclonal antibody supplied in PBS with 0.01% sodium azide and 50% glycerol, pH 7.3.
Storage	Shipped on wet ice. Store at -20°C. Stable for 24 months from date of receipt. Aliquoting is unnecessary for -20°C storage.
Precautions	Anti-AP2M1 Rabbit mAb [86S95F85] is for research use only and not for use in diagnostic or therapeutic procedures.

Protein Information

Synonyms	Adapter-related protein complex 2 mu subunit, Adaptin mu 1, Adaptin-mu2, Adaptor protein complex AP 2 subunit mu, Adaptor protein complex AP-2 subunit mu, Adaptor related protein complex 2 mu 1 subunit, AP 2 mu 2 chain, AP-2 complex subunit mu, AP-2 mu chain, Ap2m1, AP2M1_HUMAN, AP50, CLAPM1, Clathrin adaptor complex AP2 mu subunit, Clathrin assembly protein complex 2 medium chain, Clathrin associated/assembly/adaptor protein medium 1, Clathrin coat adaptor protein AP50, Clathrin coat assembly protein AP50, Clathrin coat associated protein AP50, Clathrin coat-associated protein AP50, HA2 50 kDa subunit, mu2, Plasma membrane adaptor AP-2 50 kDa protein.
Calculated MW	Calculated MW: 50 kDa; Observed MW: 50 kDa
Uniprot ID	Q96CW1
Gene ID	1173
Background	This gene encodes a subunit of the heterotetrameric coat assembly protein complex 2 (AP2), which belongs to the adaptor complexes medium subunits family. The encoded protein is required for the activity of a vacuolar ATPase, which is responsible for proton pumping occurring in the acidification of endosomes and lysosomes. The encoded protein may also play an important role in regulating the intracellular trafficking and function of CTLA-4 protein. Three transcript variants encoding different isoforms have been found for this gene. [provided by RefSeq, Jul 2015]
Cellular Location	Cell membrane. Membrane > coated pit. AP-2 appears to be excluded from internalizing CCVs and to disengage from sites of endocytosis seconds before internalization of the nascent CCV.



Western Blot - Anti-AP2M1 Rabbit mAb [86S95F85]

All lanes: R014774 at 1:1,000 dilution

Lane 1: HeLa (Human cervix adenocarcinoma epithelial cell) whole cell lysates

Lane 2: HepG2 (Human hepatocarcinoma epithelial cell) whole cell lysates

Lane 3: HCT116 (Human colorectal carcinoma epithelial cell) whole cell lysates

Lane 4: U2OS (Human osteosarcoma epithelial cell) whole cell lysates

Lane 5: T24 (Human bladder cancer epithelial cell) whole cell lysates

Lane 6: C2C12 (Mouse myoblasts epithelial cell) whole cell lysates

Lane 7: Raw264.7 (Mouse mononuclear macrophage leukemia cell) whole cell lysates

Lane 8: PC-12 (Rat adrenal pheochromocytoma epithelial cell) whole cell lysates

Lane 9: Rat brain whole tissue lysates

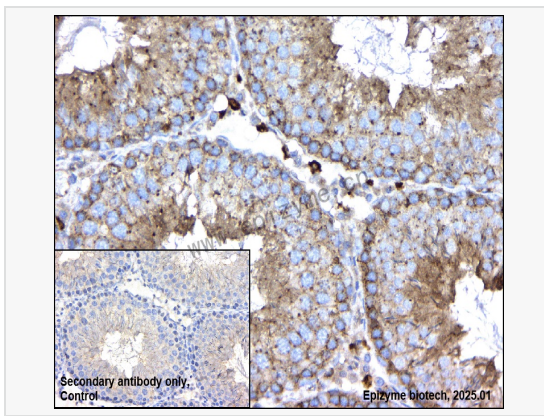
Lysates/proteins at 10 µg per lane.

Secondary antibody: Goat Anti-Rabbit IgG (H+L), HRP Conjugated (Cat. No. LF102) at 1:5,000 dilution

Predicted band size: 50 kDa

Observed band size: 50 kDa

Developed using the ECL technique (Cat. No. SQ201).



Immunohistochemistry - Anti-AP2M1 Rabbit mAb [86S95F85]

Sample: Paraformaldehyde-fixed, paraffin embedded rat testis tissue

Heat mediated antigen retrieval with Tris-EDTA buffer (pH 9.0) for 30 mins.

Primary antibody: R014774 at 1:100 dilution

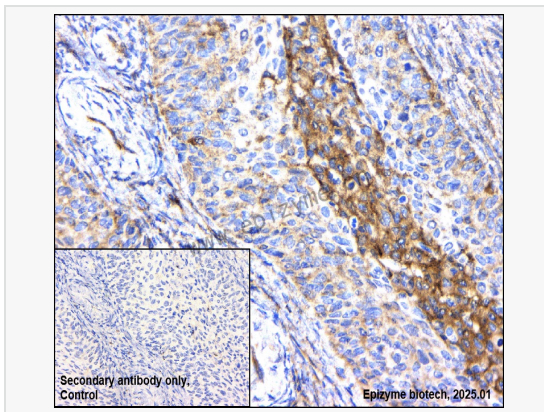
Secondary antibody: Goat Anti-Rabbit IgG (H+L), HRP conjugated at 1:1,000 dilution

DAB was used as the chromogen.

Counter stained with hematoxylin.

Positive/negative staining were presented.

Only the secondary antibody was used as the negative control.



Immunohistochemistry - Anti-AP2M1 Rabbit mAb [86S95F85]

Sample: Paraformaldehyde-fixed, paraffin embedded human cervical cancer tissue

Heat mediated antigen retrieval with Tris-EDTA buffer (pH 9.0) for 30 mins.

Primary antibody: R014774 at 1:100 dilution

Secondary antibody: Goat Anti-Rabbit IgG (H+L), HRP conjugated at 1:1,000 dilution

DAB was used as the chromogen.

Counter stained with hematoxylin.

Positive/negative staining were presented.

Only the secondary antibody was used as the negative control.