

Anti-Dcp1a Rabbit mAb

Purified Recombinant Rabbit Monoclonal Antibody

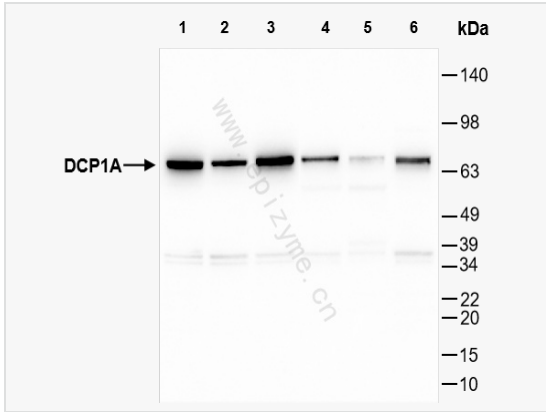
Catalog # R014667

Product Information

Application	WB, IHC-P/IF (Tissue-P), IF (Cell)/ICC, ELISA
Reactivity	Human, Mouse
Dilution	WB 1:1,000~1:2,000; IHC-P 1:100~1:200; IF 1:100~1:200
Host	Rabbit
Clonality	Monoclonal
Clone No.	32F54L03
Isotype	IgG
Label	Unconjugated
Immunogen	A synthesized peptide derived from human DCP1A
Format	Affinity purified monoclonal antibody supplied in PBS with 0.01% sodium azide and 50% glycerol, pH 7.3.
Storage	Shipped on wet ice. Store at -20°C. Stable for 24 months from date of receipt. Aliquoting is unnecessary for -20°C storage.
Precautions	Anti-Dcp1a Rabbit mAb [32F54L03] is for research use only and not for use in diagnostic or therapeutic procedures.

Protein Information

Synonyms	DCP1 decapping enzyme homolog A, Dcp1a, DCP1A_HUMAN, Decapping enzyme hDcp1a, Decapping mRNA 1A, HSA275986, mRNA decapping enzyme 1A, mRNA-decapping enzyme 1A, Nbla00360, Putative protein product of Nbla00360, Smad4 interacting transcriptional co activator, Smad4-interacting transcriptional co-activator, Smad4-interacting transcriptional co-activator, SMAD4IP1, SMIF, Transcription factor SMIF.
Calculated MW	Calculated MW: 63 kDa; Observed MW: 75 kDa
Uniprot ID	Q9NPI6
Gene ID	55802
Background	Necessary for the degradation of mRNAs, both in normal mRNA turnover and in nonsense-mediated mRNA decay. Removes the 7-methyl guanine cap structure from mRNA molecules, yielding a 5'-phosphorylated mRNA fragment and 7m-GDP. Contributes to the transactivation of target genes after stimulation by TGFBI.
Cellular Location	Cytoplasm > P-body. Nucleus. Co-localizes with NANOS3 in the processing bodies (By similarity). Predominantly cytoplasmic, in processing bodies (PB). Nuclear, after TGFBI treatment. Translocation to the nucleus depends on interaction with SMAD4.
Tissue Location	Detected in heart, brain, placenta, lung, skeletal muscle, liver, kidney and pancreas.



Western Blot - Anti-Dcp1a Rabbit mAb [32F54L03]

All lanes: R014667 at 1:1,000 dilution

Lane 1: HeLa (Human cervix adenocarcinoma epithelial cell) whole cell lysates

Lane 2: HepG2 (Human hepatocarcinoma epithelial cell) whole cell lysates

Lane 3: HCT116 (Human colorectal carcinoma epithelial cell) whole cell lysates

Lane 4: T24 (Human bladder cancer epithelial cell) whole cell lysates

Lane 5: C2C12 (Mouse myoblasts epithelial cell) whole cell lysates

Lane 6: Raw264.7 (Mouse mononuclear macrophage leukemia cell) whole cell lysates

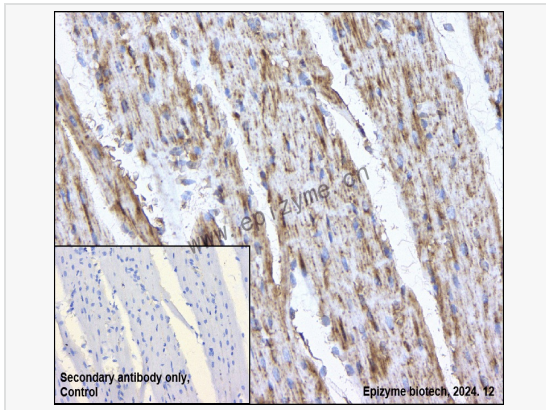
Lysates/proteins at 10 µg per lane.

Secondary antibody: Goat Anti-Rabbit IgG (H+L), HRP Conjugated (Cat. No. LF102) at 1:5,000 dilution

Predicted band size: 63 kDa

Observed band size: 75 kDa

Developed using the ECL technique (Cat. No. SQ201).



Immunohistochemistry - Anti-Dcp1a Rabbit mAb [32F54L03]

Sample: Paraformaldehyde-fixed, paraffin embedded mouse heart tissue

Heat mediated antigen retrieval with Tris-EDTA buffer (pH 9.0) for 30 mins.

Primary antibody: R014667 at 1:200 dilution

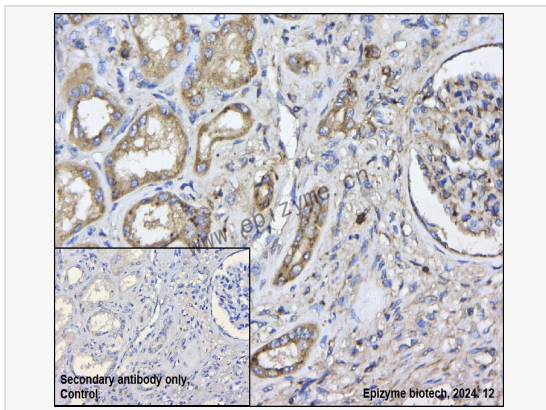
Secondary antibody: Goat Anti-Rabbit IgG (H+L), HRP conjugated at 1:1,000 dilution

DAB was used as the chromogen.

Counter stained with hematoxylin.

Positive/negative staining were presented.

Only the secondary antibody was used as the negative control.



Immunohistochemistry - Anti-Dcp1a Rabbit mAb [32F54L03]

Sample: Paraformaldehyde-fixed, paraffin embedded human renal carcinoma tissue

Heat mediated antigen retrieval with Tris-EDTA buffer (pH 9.0) for 30 mins.

Primary antibody: R014667 at 1:200 dilution

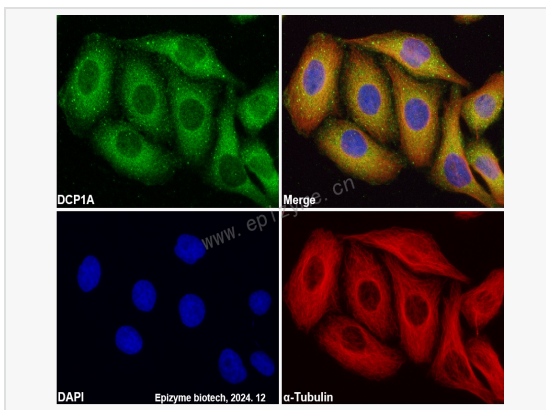
Secondary antibody: Goat Anti-Rabbit IgG (H+L), HRP conjugated at 1:1,000 dilution

DAB was used as the chromogen.

Counter stained with hematoxylin.

Positive/negative staining were presented.

Only the secondary antibody was used as the negative control.



Immunofluorescence - Anti-Dcp1a Rabbit mAb [32F54L03]

Sample: HeLa cells

The cells were fixed with 4% paraformaldehyde (10 min), permeabilized with 0.5% Triton X-100 for 10 minutes and then blocked with 5% BSA in 0.1% PBS-Tween for 0.5 hours.

Primary antibodies: R014667 at 1:100 dilution and α -tubulin Mouse Monoclonal Antibody (Cat. No. LF209) at 1:100 dilution

Secondary antibodies: Goat anti-Rabbit (488) at 1:1,000 dilution (shown in green) and Goat anti-Mouse (555) at 1:1,000 dilution (shown in red)

Nuclei were stained with DAPI (shown in blue).