

Anti-TRIB3 Rabbit mAb

Purified Recombinant Rabbit Monoclonal Antibody

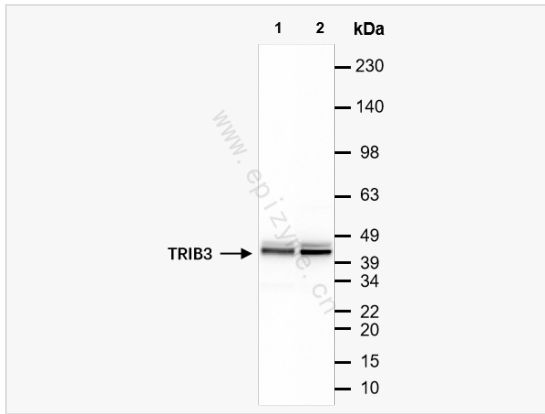
Catalog # R014641

Product Information

Application	WB, ELISA
Reactivity	Human
Dilution	WB 1:1,000~1:2,000
Host	Rabbit
Clonality	Monoclonal
Clone No.	41Q27Q58
Isotype	IgG
Label	Unconjugated
Immunogen	A synthesized peptide derived from human TRIB3
Format	Affinity purified monoclonal antibody supplied in PBS with 0.01% sodium azide and 50% glycerol, pH 7.3.
Storage	Shipped on wet ice. Store at -20°C. Stable for 24 months from date of receipt. Aliquoting is unnecessary for -20°C storage.
Precautions	Anti-TRIB3 Rabbit mAb [41Q27Q58] is for research use only and not for use in diagnostic or therapeutic procedures.

Protein Information

Synonyms	C20orf97, Neuronal cell death inducible putative kinase, Neuronal cell death-inducible putative kinase, NIPK, p65 interacting inhibitor of NF-kappaB, p65-interacting inhibitor of NF-kappa-B, SINK, SKIP 3, SKIP3, TRB 3, TRB-3, TRB3, TRIB 3, Trib3, TRIB3_HUMAN, Tribbles homolog 3, Tribbles pseudokinase 3, Tribbles3.
Calculated MW	Calculated MW: 40 kDa; Observed MW: 40 kDa
Uniprot ID	Q96RU7
Gene ID	57761
Background	Disrupts insulin signaling by binding directly to Akt kinases and blocking their activation. May bind directly to and mask the 'Thr-308' phosphorylation site in AKT1. Binds to ATF4 and inhibits its transcriptional activation activity. Interacts with the NF-kappa-B transactivator p65 RELA and inhibits its phosphorylation and thus its transcriptional activation activity.
Cellular Location	Nucleus.
Tissue Location	Highest expression in liver, pancreas, peripheral blood leukocytes and bone marrow. Also highly expressed in a number of primary lung, colon and breast tumors. Expressed in spleen, thymus, and prostate and is undetectable in other examined tissues, including testis, ovary, small intestine, colon, leukocyte, heart, brain, placenta, lung, skeletal muscle, and kidney.



Western Blot - Anti-TRIB3 Rabbit mAb [41Q27Q58]

All lanes: R014641 at 1:1,000 dilution

Lane 1: HepG2 (Human hepatocarcinoma epithelial cell) whole cell lysates

Lane 2: HCT116 (Human colorectal carcinoma epithelial cell) whole cell lysates

Lysates/proteins at 10 μ g per lane.

Secondary antibody: Goat Anti-Rabbit IgG (H+L), HRP Conjugated (Cat. No. LF102) at 1:5,000 dilution

Predicted band size: 40 kDa

Observed band size: 40 kDa

Developed using the ECL technique (Cat. No. SQ201).