

Anti-MRP1 Rabbit mAb

Purified Recombinant Rabbit Monoclonal Antibody

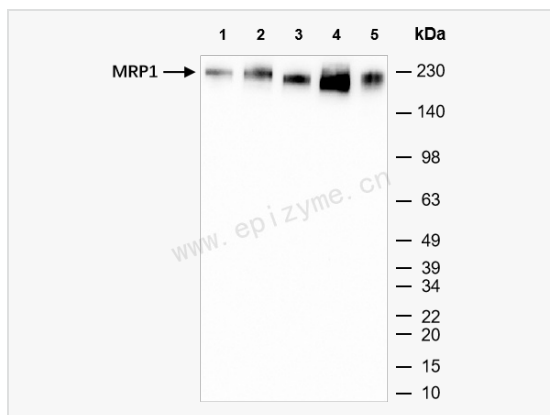
Catalog # R014614

Product Information

Application	WB, ELISA
Reactivity	Human
Dilution	WB 1:1,000~1:2,000
Host	Rabbit
Clonality	Monoclonal
Clone No.	24G99C61
Isotype	IgG
Label	Unconjugated
Immunogen	A synthesized peptide derived from human MRP1
Format	Affinity purified monoclonal antibody supplied in PBS with 0.01% sodium azide and 50% glycerol, pH 7.3.
Storage	Shipped on wet ice. Store at -20°C. Stable for 24 months from date of receipt. Aliquoting is unnecessary for -20°C storage.
Precautions	Anti-MRP1 Rabbit mAb [24G99C61] is for research use only and not for use in diagnostic or therapeutic procedures.

Protein Information

Synonyms	ABC 29, ABC29, ABCC 1, ABCC, Abcc1, ATP binding cassette sub family C (CFTR/MRP) member 1, ATP binding cassette sub-family C member 1, ATP binding cassette subfamily C member 1, ATP binding cassette transporter variant ABCC1delta ex13, ATP binding cassette transporter variant ABCC1delta ex13&14, ATP binding cassette transporter variant ABCC1delta ex25, ATP binding cassette transporter variant ABCC1delta ex25&26, ATP binding cassette, sub-family C (CFTR/MRP), member 1, ATP-binding cassette sub-family C member 1, DKFZp686N04233, DKFZp781G125, GS X, GSX, Leukotriene C(4) transporter, LTC4 transporter, MRP 1, MRP, MRP1, MRP1_HUMAN, Multidrug resistance associated protein 1, Multidrug resistance protein, Multidrug resistance-associated protein 1, Multiple drug resistance associated protein, Multiple drug resistance protein 1.
Calculated MW	Calculated MW: 172 kDa; Observed MW: 170-220 kDa
Uniprot ID	P33527
Gene ID	4363
Background	The protein encoded by this gene is a member of the superfamily of ATP-binding cassette (ABC) transporters. ABC proteins transport various molecules across extra-and intra-cellular membranes. ABC genes are divided into seven distinct subfamilies (ABC1, MDR/TAP, MRP, ALD, OABP, GCN20, White). This full transporter is a member of the MRP subfamily which is involved in multi-drug resistance. This protein functions as a multispecific organic anion transporter, with oxidized glutathione, cysteinyl leukotrienes, and activated aflatoxin B1 as substrates. This protein also transports glucuronides and sulfate conjugates of steroid hormones and bile salts. Alternatively spliced variants of this gene have been described but their full-length nature is unknown. [provided by RefSeq, Apr 2012]



Western Blot - Anti-MRP1 Rabbit mAb [24G99C61]

All lanes: R014614 at 1:1,000 dilution

Lane 1: HeLa (Human cervix adenocarcinoma epithelial cell) whole cell lysates

Lane 2: HepG2 (Human hepatocarcinoma epithelial cell) whole cell lysates

Lane 3: HCT116 (Human colorectal carcinoma epithelial cell) whole cell lysates

Lane 4: A431 (Human epidermoid teratoma cell line) whole cell lysates

Lane 5: T24 (Human bladder cancer epithelial cell) whole cell lysates

Lysates/proteins at 10 μ g per lane.

Secondary antibody: Goat Anti-Rabbit IgG (H+L), HRP Conjugated (Cat. No. LF102) at 1:5,000 dilution

Predicted band size: 172 kDa

Observed band size: 170-220 kDa

Developed using the ECL technique (Cat. No. SQ201).