

Anti-AP2M1 Rabbit mAb

Purified Recombinant Rabbit Monoclonal Antibody

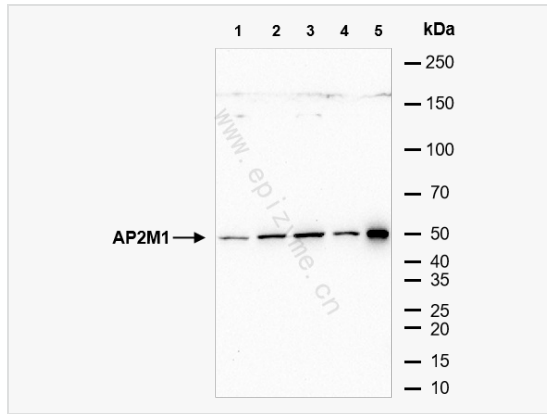
Catalog # R014529

Product Information

Application	ELISA, WB
Reactivity	Human
Dilution	WB 1:1,000~1:2,000
Host	Rabbit
Clonality	Monoclonal
Clone No.	26E97D88
Isotype	IgG
Label	Unconjugated
Immunogen	A synthesized peptide derived from human AP2M1
Format	Affinity purified monoclonal antibody supplied in PBS with 0.01% sodium azide and 50% glycerol, pH 7.3.
Storage	Shipped on wet ice. Store at -20°C. Stable for 24 months from date of receipt. Aliquoting is unnecessary for -20°C storage.
Precautions	Anti-AP2M1 Rabbit mAb [26E97D88] is for research use only and not for use in diagnostic or therapeutic procedures.

Protein Information

Synonyms	Adapter-related protein complex 2 mu subunit, Adaptin mu 1, Adaptin-mu2, Adaptor protein complex AP 2 subunit mu, Adaptor protein complex AP-2 subunit mu, Adaptor related protein complex 2 mu 1 subunit, AP 2 mu 2 chain, AP-2 complex subunit mu, AP-2 mu chain, Ap2m1, AP2M1_HUMAN, AP50, CLAPM1, Clathrin adaptor complex AP2 mu subunit, Clathrin assembly protein complex 2 medium chain, Clathrin associated/assembly/adaptor protein medium 1, Clathrin coat adaptor protein AP50, Clathrin coat assembly protein AP50, Clathrin coat associated protein AP50, Clathrin coat-associated protein AP50, HA2 50 kDa subunit, mu2, Plasma membrane adaptor AP-2 50 kDa protein.
Calculated MW	Calculated MW: 50 kDa; Observed MW: 50 kDa
Uniprot ID	Q96CW1
Gene ID	1173
Background	Adaptins are heterotetrameric subunits of adaptors, which are complexes involved in the formation of Clathrin-coated pits for vesicle-mediated endocytosis. Involved in clathrin-dependent endocytosis in which cargo proteins are incorporated into vesicles surrounded by clathrin (clathrin-coated vesicles, CCVs) which are destined for fusion with the early endosome.
Cellular Location	Cell membrane. Membrane > coated pit. AP-2 appears to be excluded from internalizing CCVs and to disengage from sites of endocytosis seconds before internalization of the nascent CCV.



Western Blot - Anti-AP2M1 Rabbit mAb [26E97D88]

All lanes: R014529 at 1:1,000 dilution

Lane 1: HeLa (Human cervix adenocarcinoma epithelial cell) whole cell lysates

Lane 2: HepG2 (Human hepatocarcinoma epithelial cell) whole cell lysates

Lane 3: HCT116 (Human colorectal carcinoma epithelial cell) whole cell lysates

Lane 4: A431 (Human epidermoid teratoma cell line) whole cell lysates

Lane 5: T24 (Human bladder cancer epithelial cell) whole cell lysates

Lysates/proteins at 10 μ g per lane.

Secondary antibody: Goat Anti-Rabbit IgG (H+L), HRP Conjugated (Cat. No. LF102) at 1:5,000 dilution

Predicted band size: 50 kDa

Observed band size: 50 kDa

Developed using the ECL technique (Cat. No. SQ201).