

## Anti-TYRO3 Rabbit mAb

Purified Recombinant Rabbit Monoclonal Antibody

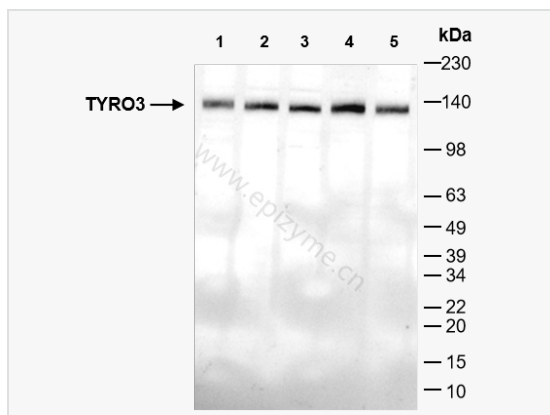
Catalog # R014514

### Product Information

Application	WB, ELISA
Reactivity	Human, Rat, Mouse
Dilution	WB 1:1,000~1:2,000
Host	Rabbit
Clonality	Monoclonal
Clone No.	19N56E16
Isotype	IgG
Label	Unconjugated
Immunogen	A synthesized peptide derived from human TYRO3
Format	Affinity purified monoclonal antibody supplied in PBS with 0.01% sodium azide and 50% glycerol, pH 7.3.
Storage	Shipped on wet ice. Store at -20°C. Stable for 24 months from date of receipt. Aliquoting is unnecessary for -20°C storage.
Precautions	Anti-TYRO3 Rabbit mAb [19N56E16] is for research use only and not for use in diagnostic or therapeutic procedures.

### Protein Information

Synonyms	Brk, BYK, DTK, Etk-2, protein tyrosine kinase 3, Rek, RSE, SKY, Tif, tyro3, TYRO3 protein tyrosine kinase, TYRO3_HUMAN, Tyrosine-protein kinase byk, Tyrosine-protein kinase DTK, Tyrosine-protein kinase receptor TYRO3, Tyrosine-protein kinase RSE, Tyrosine-protein kinase SKY, Tyrosine-protein kinase TIF.
Calculated MW	Calculated MW: 97 kDa; Observed MW: 130 kDa
Uniprot ID	Q06418
Gene ID	7301
Background	May be involved in cell adhesion processes, particularly in the central nervous system. In case of filovirus infection, seems to function as a cell entry factor.
Cellular Location	Cell membrane.
Tissue Location	Abundant in the brain and lower levels in other tissues.



Western Blot - Anti-TYRO3 Rabbit mAb [19N56E16]

All lanes: R014514 at 1:1,000 dilution

Lane 1: HeLa (Human cervix adenocarcinoma epithelial cell) whole cell lysates

Lane 2: HepG2 (Human hepatocarcinoma epithelial cell) whole cell lysates

Lane 3: HCT116 (Human colorectal carcinoma epithelial cell) whole cell lysates

Lane 4: A431 (Human epidermoid teratoma cell line) whole cell lysates

Lane 5: Raw264.7 (Mouse mononuclear macrophage leukemia cell) whole cell lysates

Lysates/proteins at 10  $\mu$ g per lane.

Secondary antibody: Goat Anti-Rabbit IgG(H+L), HRP Conjugated (Cat. No. LF102) at 1:5,000 dilution

Predicted band size: 97 kDa

Observed band size: 130 kDa

Developed using the ECL technique (Cat. No. SQ201).