

Anti-NXF1 Rabbit mAb

Purified Recombinant Rabbit Monoclonal Antibody

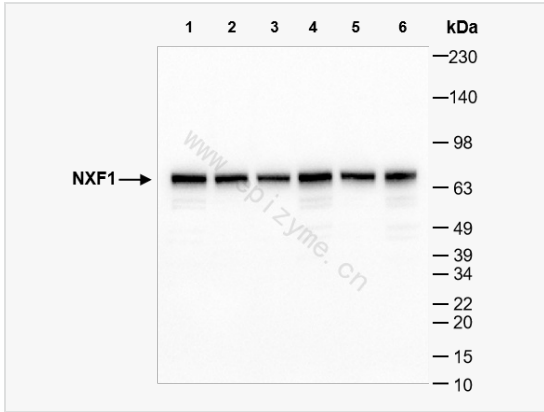
Catalog # R014474

Product Information

Application	ELISA, WB, IHC-P/IF (Tissue-P), IF (Cell)/ICC
Reactivity	Human
Dilution	WB 1:1,000~1:2,000; IHC-P 1:100~1:200; IF 1:100~1:200
Host	Rabbit
Clonality	Monoclonal
Clone No.	71L76E55
Isotype	IgG
Label	Unconjugated
Immunogen	A synthesized peptide derived from human NXF1
Format	Affinity purified monoclonal antibody supplied in PBS with 0.01% sodium azide and 50% glycerol, pH 7.3.
Storage	Shipped on wet ice. Store at -20°C. Stable for 24 months from date of receipt. Aliquoting is unnecessary for -20°C storage.
Precautions	Anti-NXF1 Rabbit mAb [71L76E55] is for research use only and not for use in diagnostic or therapeutic procedures.

Protein Information

Synonyms	DKFZp667O0311, DmNXF1, MEX67, MEX67, yeast, homolog of, Mex67p, mRNA export factor TAP, Mvb1, Nuclear RNA export factor 1, Nuclear RNA export factor 1 homolog (<i>S. cerevisiae</i>), nxf 1, NXF1, NXF1_HUMAN, Protein small bristles, Sbr, TAP, Tip associating protein, Tip-associated protein, Tip-associating protein.
Calculated MW	Calculated MW: 70 kDa; Observed MW: 70 kDa
Uniprot ID	Q9UBU9
Gene ID	10482
Background	Involved in the nuclear export of mRNA species bearing retroviral constitutive transport elements (CTE) and in the export of mRNA from the nucleus to the cytoplasm. The NXF1-NXT1 heterodimer is involved in the export of HSP70 mRNA in conjunction with THOC4 and THOC5.
Cellular Location	Nucleus > nucleoplasm. Nucleus speckle. Cytoplasm. Localized predominantly in the nucleoplasm and at both the nucleoplasmic and cytoplasmic faces of the nuclear pore complex. Shuttles between the nucleus and the cytoplasm. Travels to the cytoplasm as part of the exon junction complex (EJC) bound to mRNA.
Tissue Location	Expressed ubiquitously.



Western Blot - Anti-NXF1 Rabbit mAb [71L76E55]

All lanes: R014474 at 1:1,000 dilution

Lane 1: HeLa (Human cervix adenocarcinoma epithelial cell) whole cell lysates

Lane 2: HepG2 (Human hepatocarcinoma epithelial cell) whole cell lysates

Lane 3: HCT116 (Human colorectal carcinoma epithelial cell) whole cell lysates

Lane 4: A431 (Human epidermoid teratoma cell line) whole cell lysates

Lane 5: T24 (Human bladder cancer epithelial cell) whole cell lysates

Lane 6: U2OS (Human osteosarcoma epithelial cell) whole cell lysates

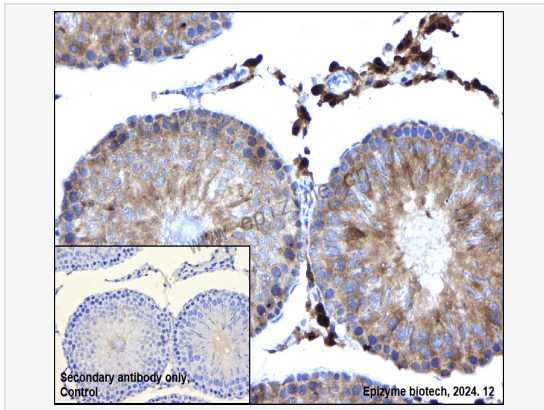
Lysates/proteins at 10 µg per lane.

Secondary antibody: Goat Anti-Rabbit IgG(H+L), HRP Conjugated (Cat. No. LF102) at 1:5,000 dilution

Predicted band size: 70 kDa

Observed band size: 70 kDa

Developed using the ECL technique (Cat. No. SQ201).



Immunohistochemistry - Anti-NXF1 Rabbit mAb [71L76E55]

Sample: Paraformaldehyde-fixed, paraffin embedded rat testis tissue

Heat mediated antigen retrieval with Tris-EDTA buffer (pH 9.0) for 30 mins.

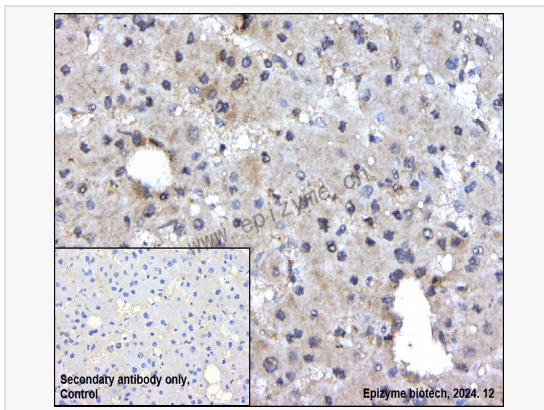
Primary antibody: R014474 at 1:200 dilution

Secondary antibody: Goat Anti-Rabbit IgG (H+L), HRP conjugated at 1:1,000 dilution
DAB was used as the chromogen.

Counter stained with hematoxylin.

Positive/negative staining were presented.

Only the secondary antibody was used as the negative control.



Immunohistochemistry - Anti-NXF1 Rabbit mAb [71L76E55]

Sample: Paraformaldehyde-fixed, paraffin embedded human hepatoma tissue

Heat mediated antigen retrieval with Tris-EDTA buffer (pH 9.0) for 30 mins.

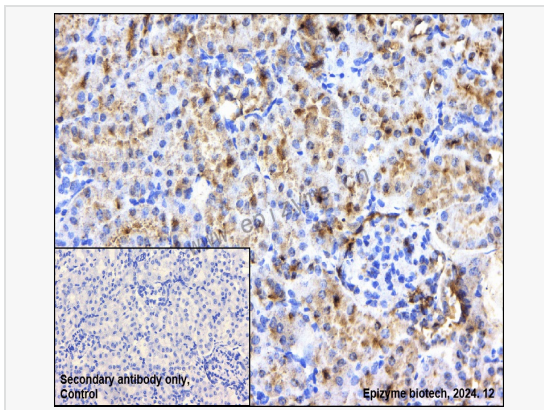
Primary antibody: R014474 at 1:200 dilution

Secondary antibody: Goat Anti-Rabbit IgG (H+L), HRP conjugated at 1:1,000 dilution
DAB was used as the chromogen.

Counter stained with hematoxylin.

Positive/negative staining were presented.

Only the secondary antibody was used as the negative control.



Immunohistochemistry - Anti-NXF1 Rabbit mAb [71L76E55]

Sample: Paraformaldehyde-fixed, paraffin embedded mouse kidney tissue

Heat mediated antigen retrieval with Tris-EDTA buffer (pH 9.0) for 30 mins.

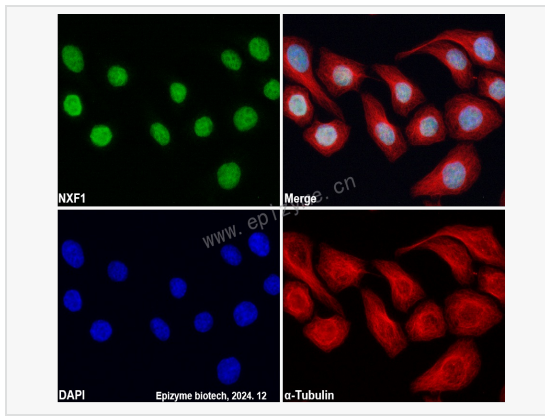
Primary antibody: R014474 at 1:200 dilution

Secondary antibody: Goat Anti-Rabbit IgG (H+L), HRP conjugated at 1:1,000 dilution
DAB was used as the chromogen.

Counter stained with hematoxylin.

Positive/negative staining were presented.

Only the secondary antibody was used as the negative control.



Immunofluorescence - Anti-NXF1 Rabbit mAb [71L76E55]

Sample: HeLa cells

The cells were fixed with 4% paraformaldehyde (10 min), permeabilized with 0.5% Triton X-100 for 10 minutes and then blocked with 5% BSA in 0.1% PBS-Tween for 0.5 hours.

Primary antibodies: R014474 at 1:100 dilution and α -tubulin Mouse Monoclonal Antibody (Cat. No. LF209) at 1:100 dilution

Secondary antibodies: Goat anti-Rabbit (488) at 1:1,000 dilution (shown in green) and Goat anti-Mouse (CY3) at 1:1,000 dilution (shown in red)

Nuclei were stained with DAPI (shown in blue).