

Anti-LIME Rabbit mAb

Purified Recombinant Rabbit Monoclonal Antibody

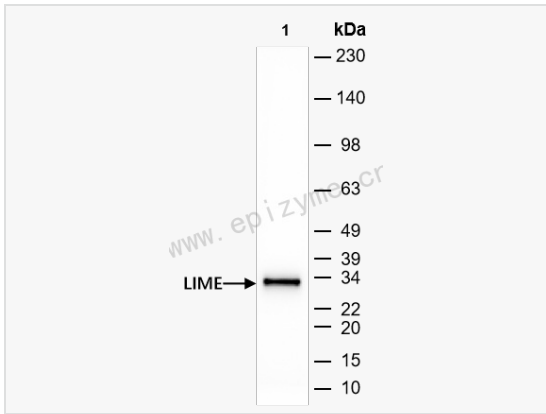
Catalog # R014399

Product Information

Application	WB, IHC-P/IF (Tissue-P), IF (Cell)/ICC, ELISA
Reactivity	Human
Dilution	WB 1:1,000~1:2,000; IHC-P 1:100~1:200; IF 1:100~1:200
Host	Rabbit
Clonality	Monoclonal
Clone No.	13Q57L75
Isotype	IgG
Label	Unconjugated
Immunogen	A synthesized peptide derived from human MCM4
Format	Affinity purified monoclonal antibody supplied in PBS with 0.01% sodium azide and 50% glycerol, pH 7.3.
Storage	Shipped on wet ice. Store at -20°C. Stable for 24 months from date of receipt. Aliquoting is unnecessary for -20°C storage.
Precautions	Anti-LIME Rabbit mAb [13Q57L75] is for research use only and not for use in diagnostic or therapeutic procedures.

Protein Information

Synonyms	dJ583P15.4, FLJ20406, Lck interacting membrane protein, Lck interacting molecule, Lck interacting transmembrane adaptor 1, LIME 1, LIME1, LP8067, RP4 583P15.5.
Calculated MW	Calculated MW: 31 kDa; Observed MW: 31 kDa
Uniprot ID	Q9H400
Gene ID	54923
Background	This gene encodes a transmembrane adaptor protein that links the T and B-cell receptor stimulation to downstream signaling pathways via its association with the Src family kinases Lck and Lyn, respectively. Alternative splicing of this gene results in multiple transcript variants. [provided by RefSeq, Mar 2015]
Cellular Location	Cell membrane; Single-pass type III membrane protein. Present in lipid rafts. Recruited to the immunological synapse upon conjugation of T cell with antigen presenting cell



Western Blot - Anti-LIME Rabbit mAb [13Q57L75]

All lanes: R014399 at 1:1,000 dilution

Lane 1: HCT116 (Human colorectal carcinoma epithelial cell) whole cell lysates

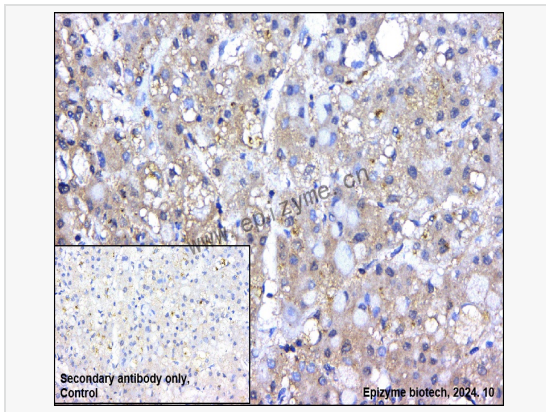
Lysates/proteins at 10 µg per lane.

Secondary antibody: Goat Anti-Rabbit IgG(H+L), HRP Conjugated (Cat. No. LF102) at 1:5,000 dilution

Predicted band size: 31 kDa

Observed band size: 31 kDa

Developed using the ECL technique (Cat. No. SQ201).



Immunohistochemistry - Anti-LIME Rabbit mAb [13Q57L75]

Sample: Paraformaldehyde-fixed, paraffin embedded human hepatoma tissue

Heat mediated antigen retrieval with Tris-EDTA buffer (pH 9.0) for 30 mins.

Primary antibody: R014399 at 1:200 dilution

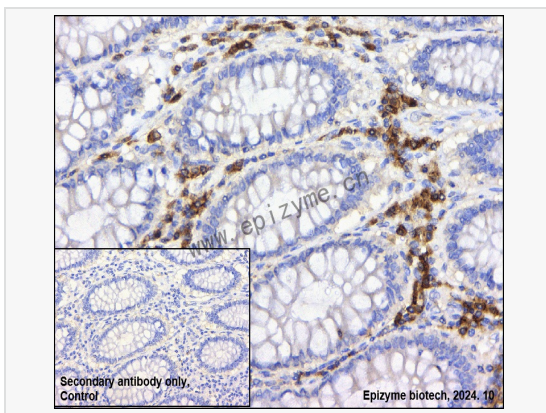
Secondary antibody: Goat Anti-Rabbit IgG (H+L), HRP conjugated at 1:1,000 dilution

DAB was used as the chromogen.

Counter stained with hematoxylin.

Positive/negative staining were presented.

Only the secondary antibody was used as the negative control.



Immunohistochemistry - Anti-LIME Rabbit mAb [13Q57L75]

Sample: Paraformaldehyde-fixed, paraffin embedded human colonic cancer tissue

Heat mediated antigen retrieval with Tris-EDTA buffer (pH 9.0) for 30 mins.

Primary antibody: R014399 at 1:200 dilution

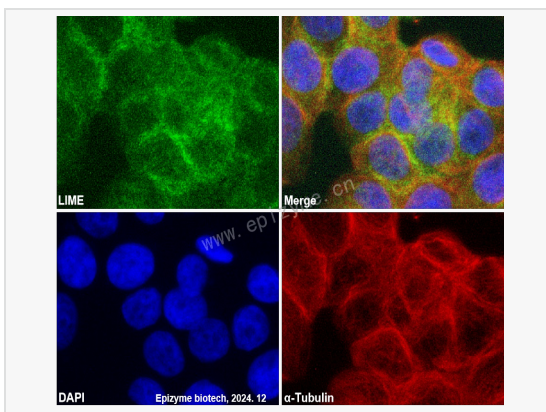
Secondary antibody: Goat Anti-Rabbit IgG (H+L), HRP conjugated at 1:1,000 dilution

DAB was used as the chromogen.

Counter stained with hematoxylin.

Positive/negative staining were presented.

Only the secondary antibody was used as the negative control.



Immunofluorescence - Anti-LIME Rabbit mAb [13Q57L75]

Sample: HT-29 cells

The cells were fixed with 4% paraformaldehyde (10 min), permeabilized with 0.5% Triton X-100 for 10 minutes and then blocked with 5% BSA in 0.1% PBS-Tween for 0.5 hours.

Primary antibodies: R014399 at 1:100 dilution and α-tubulin Mouse Monoclonal Antibody (Cat. No. LF209) at 1:100 dilution

Secondary antibodies: Goat anti-Rabbit (488) at 1:1,000 dilution (shown in green) and

Goat anti-Mouse (555) at 1:1,000 dilution (shown in red)

Nuclei were stained with DAPI (shown in blue).