

Anti-UPK1A Rabbit mAb

Purified Recombinant Rabbit Monoclonal Antibody

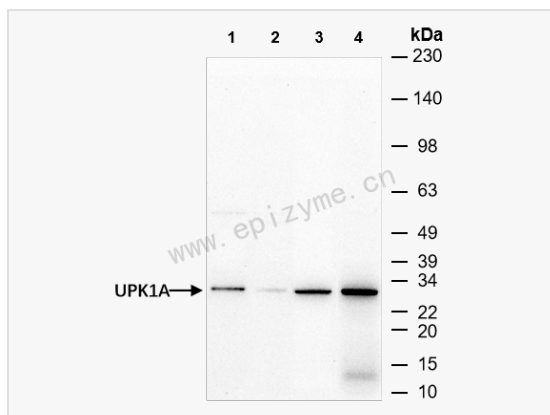
Catalog # R014396

Product Information

Application	WB, ELISA
Reactivity	Rat, Mouse, Human
Dilution	WB 1:1,000~1:2,000
Host	Rabbit
Clonality	Monoclonal
Clone No.	59A90I05
Isotype	IgG
Label	Unconjugated
Immunogen	Recombinant protein of human BRAF
Format	Affinity purified monoclonal antibody supplied in PBS with 0.01% sodium azide and 50% glycerol, pH 7.3.
Storage	Shipped on wet ice. Store at -20°C. Stable for 24 months from date of receipt. Aliquoting is unnecessary for -20°C storage.
Precautions	Anti-UPK1A Rabbit mAb [59A90I05] is for research use only and not for use in diagnostic or therapeutic procedures.

Protein Information

Synonyms	ATG 1, ATG1, ATG1 autophagy related 1 homolog, ATG1A, Autophagy related protein 1 homolog, Autophagy-related protein 1 homolog, FLJ38455, FLJ46475, hATG1, KIAA0722, Serine/threonine protein kinase ULK1, Serine/threonine protein kinase Unc51.1, Serine/threonine-protein kinase ULK1, ULK 1, ULK1, ULK1_HUMAN, Unc 51 (C. elegans) like kinase 1, UNC 51, Unc 51 like kinase 1, Unc-51 like kinase 1 (C. elegans), Unc-51-like kinase 1, UNC51, UNC51, C. elegans, homolog of, Unc51.1.
Calculated MW	Calculated MW: 29 kDa; Observed MW: 29 kDa
Uniprot ID	O00322
Gene ID	11045
Background	The protein encoded by this gene is a member of the transmembrane 4 superfamily, also known as the tetraspanin family. Most of these members are cell-surface proteins that are characterized by the presence of four hydrophobic domains. The proteins mediate signal transduction events that play a role in the regulation of cell development, activation, growth and motility. This encoded protein is found in the asymmetrical unit membrane (AUM) where it can complex with other transmembrane 4 superfamily proteins. It may play a role in normal bladder epithelial physiology, possibly in regulating membrane permeability of superficial umbrella cells or in stabilizing the apical membrane through AUM/cytoskeletal interactions. The protein may also play a role in tumor suppression. Alternative splicing results in multiple transcript variants of this gene. [provided by RefSeq, Jul 2013]
Cellular Location	Cytoplasm, cytosol. Preautophagosomal structure. Under starvation conditions, is localized to punctate structures primarily representing the isolation membrane that sequesters a portion of the cytoplasm resulting in the formation of an autophagosome.



Western Blot - Anti-UPK1A Rabbit mAb [59A90I05]

All lanes: R014396 at 1:1,000 dilution

Lane 1: A431 (Human epidermoid teratoma cell line) whole cell lysates

Lane 2: T24 (Human bladder cancer epithelial cell) whole cell lysates

Lane 3: Rat kidney whole tissue lysates

Lane 4: Rat spleen whole tissue lysates

Lysates/proteins at 10 µg per lane.

Secondary antibody: Goat Anti-Rabbit IgG(H+L), HRP Conjugated (Cat. No. LF102) at 1:5,000 dilution

Predicted band size: 29 kDa

Observed band size: 29 kDa

Developed using the ECL technique (Cat. No. SQ201).