

Anti-TLE1 Rabbit mAb

Purified Recombinant Rabbit Monoclonal Antibody

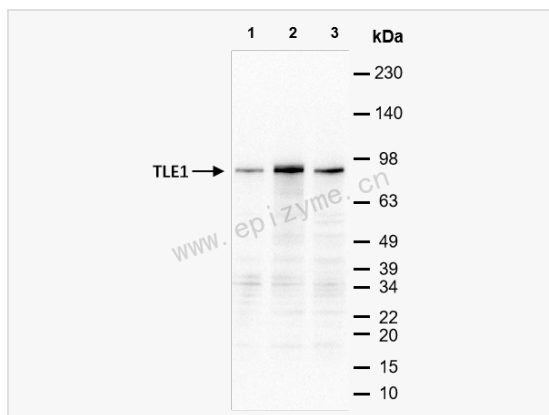
Catalog # R014369

Product Information

Application	WB, IF (Cell)/ICC, ELISA
Reactivity	Human, Rat
Dilution	WB 1:1,000~1:2,000; IF 1:100~1:200
Host	Rabbit
Clonality	Monoclonal
Clone No.	78N82A43
Isotype	IgG
Label	Unconjugated
Immunogen	A synthesized peptide derived from human TIA1
Format	Affinity purified monoclonal antibody supplied in PBS with 0.01% sodium azide and 50% glycerol, pH 7.3.
Storage	Shipped on wet ice. Store at -20°C. Stable for 24 months from date of receipt. Aliquoting is unnecessary for -20°C storage.
Precautions	Anti-TLE1 Rabbit mAb [78N82A43] is for research use only and not for use in diagnostic or therapeutic procedures.

Protein Information

Synonyms	E(Sp1) homolog, Enhancer of split groucho 1, Enhancer of split groucho like protein 1, Enhancer of split groucho-like protein 1, ESG, ESG1, GRG1, TLE1, TLE1_HUMAN, Transducin like enhancer of split 1 (E(sp1) homolog Drosophila), Transducin like enhancer of split 1, Transducin like enhancer of split 1 homolog of Drosophila E(sp1), Transducin like enhancer protein 1, Transducin-like enhancer protein 1.
Calculated MW	Calculated MW: 83 kDa; Observed MW: 83 kDa
Uniprot ID	Q04724
Gene ID	7088
Background	Transcriptional corepressor that binds to a number of transcription factors. Inhibits NF-kappa-B-regulated gene expression. Inhibits the transcriptional activation mediated by FOXA2, and by CTNNB1 and TCF family members in Wnt signaling.
Cellular Location	Nucleus. Nuclear and chromatin-associated, depending on isoforms and phosphorylation status. Hyperphosphorylation decreases the affinity for nuclear components.
Tissue Location	In all tissues examined, mostly in brain, liver and muscle.



Western Blot - Anti-TLE1 Rabbit mAb [78N82A43]

All lanes: R014369 at 1:1,000 dilution

Lane 1: HeLa (Human cervix adenocarcinoma epithelial cell) whole cell lysates

Lane 2: HepG2 (Human hepatocarcinoma epithelial cell) whole cell lysates

Lane 3: HCT116 (Human colorectal carcinoma epithelial cell) whole cell lysates

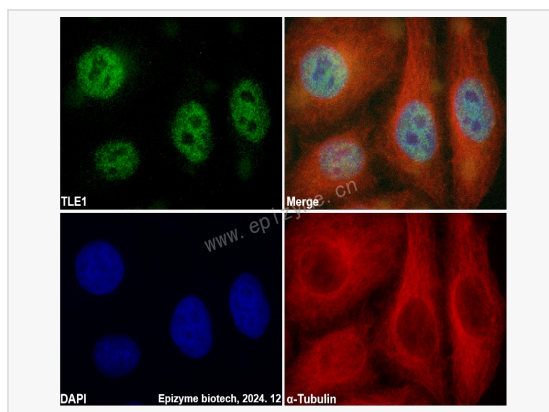
Lysates/proteins at 10 µg per lane.

Secondary antibody: Goat Anti-Rabbit IgG(H+L), HRP Conjugated (Cat. No. LF102) at 1:5,000 dilution

Predicted band size: 83 kDa

Observed band size: 83 kDa

Developed using the ECL technique (Cat. No. SQ201).



Immunofluorescence - Anti-TLE1 Rabbit mAb [78N82A43]

Sample: HeLa cells

The cells were fixed with 4% paraformaldehyde (10 min), permeabilized with 0.5% Triton X-100 for 10 minutes and then blocked with 5% BSA in 0.1% PBS-Tween for 0.5 hours.

Primary antibodies: R014369 at 1:100 dilution and α -tubulin Mouse Monoclonal Antibody (Cat. No. LF209) at 1:100 dilution

Secondary antibodies: Goat anti-Rabbit (488) at 1:1,000 dilution (shown in green) and Goat anti-Mouse (555) at 1:1,000 dilution (shown in red)

Nuclei were stained with DAPI (shown in blue).