

# Anti-Thymidine Kinase 1 Rabbit mAb

Purified Recombinant Rabbit Monoclonal Antibody

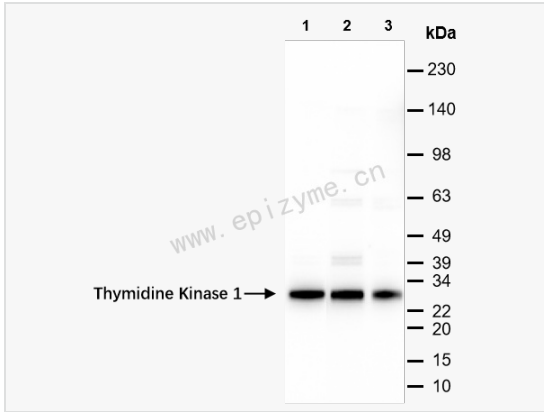
Catalog # R014368

## Product Information

Application	WB, IHC-P/IF (Tissue-P), IF (Cell)/ICC, ELISA
Reactivity	Human
Dilution	WB 1:1,000~1:3,000; IHC-P 1:100~1:200; IF 1:100~1:200
Host	Rabbit
Clonality	Monoclonal
Clone No.	83Q39S34
Isotype	IgG
Label	Unconjugated
Immunogen	A synthesized peptide derived from human MINA53
Format	Affinity purified monoclonal antibody supplied in PBS with 0.01% sodium azide and 50% glycerol, pH 7.3.
Storage	Shipped on wet ice. Store at -20°C. Stable for 24 months from date of receipt. Aliquoting is unnecessary for -20°C storage.
Precautions	Anti-Thymidine Kinase 1 Rabbit mAb [83Q39S34] is for research use only and not for use in diagnostic or therapeutic procedures.

## Protein Information

Synonyms	cytosolic, KITH_HUMAN, Thymidine kinase 1, Thymidine kinase 1 soluble, Thymidine kinase 1 soluble isoform, Thymidine kinase, Thymidine kinase cytosolic, TK 1, TK 2, TK1, Tk1a, Tk1b, TK2.
Calculated MW	Calculated MW: 25 kDa; Observed MW: 25 kDa
Uniprot ID	P04183
Gene ID	7083
Background	TK is a cytosolic thymidine kinase. Phosphorylated during mitosis. Its enzymatic activity is high in proliferating cells and peaks during the S-phase of the cell cycle; it is very low in resting cells.
Cellular Location	Cytoplasm.



Western Blot - Anti-Thymidine Kinase 1 Rabbit mAb [83Q39S34]

All lanes: R014368 at 1:3,000 dilution

Lane 1: HCT116 (Human colorectal carcinoma epithelial cell) whole cell lysates

Lane 2: A431 (Human epidermoid teratoma cell line) whole cell lysates

Lane 3: T24 (Human bladder cancer epithelial cell) whole cell lysates

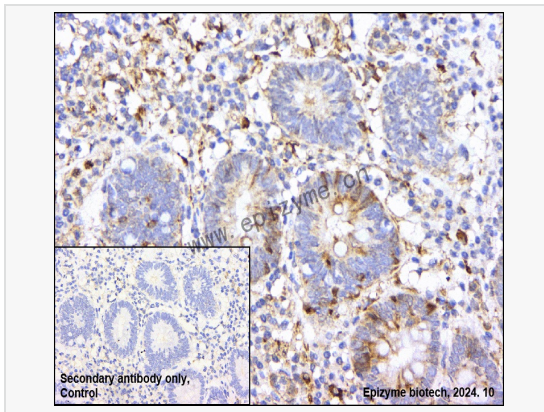
Lysates/proteins at 10 µg per lane.

Secondary antibody: Goat Anti-Rabbit IgG(H+L), HRP Conjugated (Cat. No. LF102) at 1:5,000 dilution

Predicted band size: 25 kDa

Observed band size: 25 kDa

Developed using the ECL technique (Cat. No. SQ201).



Immunohistochemistry - Anti-Thymidine Kinase 1 Rabbit mAb [83Q39S34]

Sample: Paraformaldehyde-fixed, paraffin embedded human gastric cancer tissue

Heat mediated antigen retrieval with Tris-EDTA buffer (pH 9.0) for 30 mins.

Primary antibody: R014368 at 1:200 dilution

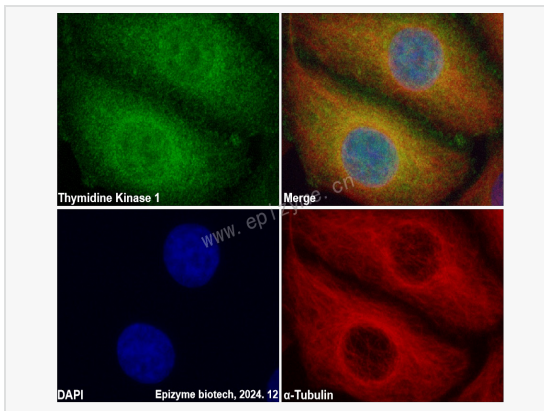
Secondary antibody: Goat Anti-Rabbit IgG (H+L), HRP conjugated at 1:1,000 dilution

DAB was used as the chromogen.

Counter stained with hematoxylin.

Positive/negative staining were presented.

Only the secondary antibody was used as the negative control.



Immunofluorescence - Anti-Thymidine Kinase 1 Rabbit mAb [83Q39S34]

Sample: HeLa cells

The cells were fixed with 4% paraformaldehyde (10 min), permeabilized with 0.5% Triton X-100 for 10 minutes and then blocked with 5% BSA in 0.1% PBS-Tween for 0.5 hours.

Primary antibodies: R014368 at 1:100 dilution and  $\alpha$ -tubulin Mouse Monoclonal Antibody (Cat. No. LF209) at 1:100 dilution

Secondary antibodies: Goat anti-Rabbit (488) at 1:1,000 dilution (shown in green) and Goat anti-Mouse (555) at 1:1,000 dilution (shown in red)

Nuclei were stained with DAPI (shown in blue).