

Anti-FGFR2 Rabbit mAb

Purified Recombinant Rabbit Monoclonal Antibody

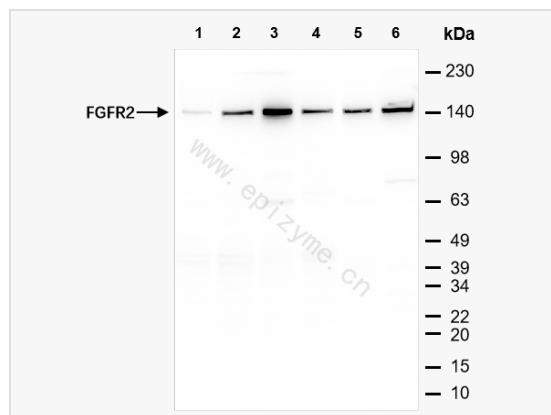
Catalog # R014260

Product Information

Application	WB, IF (Cell)/ICC, ELISA
Reactivity	Human, Mouse, Rat
Dilution	WB 1:1,000~1:2,000; IF 1:100~1:200
Host	Rabbit
Clonality	Monoclonal
Clone No.	30N36N11
Isotype	IgG
Label	Unconjugated
Immunogen	A synthesized peptide derived from human FGFR2
Format	Affinity purified monoclonal antibody supplied in PBS with 0.01% sodium azide and 50% glycerol, pH 7.3.
Storage	Shipped on wet ice. Store at -20°C. Stable for 24 months from date of receipt. Aliquoting is unnecessary for -20°C storage.
Precautions	Anti-FGFR2 Rabbit mAb [30N36N11] is for research use only and not for use in diagnostic or therapeutic procedures.

Protein Information

Synonyms	bacteria-expressed kinase, BBDS, BEK, BEK fibroblast growth factor receptor, BFR1, CD332, CD332 antigen, CEK3, CFD1, Craniofacial dysostosis 1, ECT1, FGF receptor, FGFR 2, FGFR-2, Fgfr2, FGFR2_HUMAN, Fibroblast growth factor receptor 2, Hydroxyaryl protein kinase, Jackson Weiss syndrome, JWS, K SAM, K-sam, Keratinocyte growth factor receptor 2, Keratinocyte growth factor receptor, KGFR, KSAM, protein tyrosine kinase, receptor like 14, soluble FGFR4 variant 4, TK14, TK25.
Calculated MW	Calculated MW: 92 kDa; Observed MW: 145 kDa
Uniprot ID	P21802
Gene ID	2263
Background	Fibroblast growth factors (FGFs) produce mitogenic and angiogenic effects in target cells by signaling through cell surface receptor tyrosine kinases. Receptor for acidic and basic fibroblast growth factors.
Cellular Location	Secreted and Cell membrane.



Western Blot - Anti-FGFR2 Rabbit mAb [30N36N11]

All lanes: R014260 at 1:1,000 dilution

Lane 1: HeLa (Human cervix adenocarcinoma epithelial cell) whole cell lysates

Lane 2: HepG2 (Human hepatocarcinoma epithelial cell) whole cell lysates

Lane 3: C2C12 (Mouse myoblasts epithelial cell) whole cell lysates

Lane 4: A431 (Human epidermoid teratoma cell line) whole cell lysates

Lane 5: Rat heart whole tissue lysates

Lane 6: Rat muscle whole tissue lysates

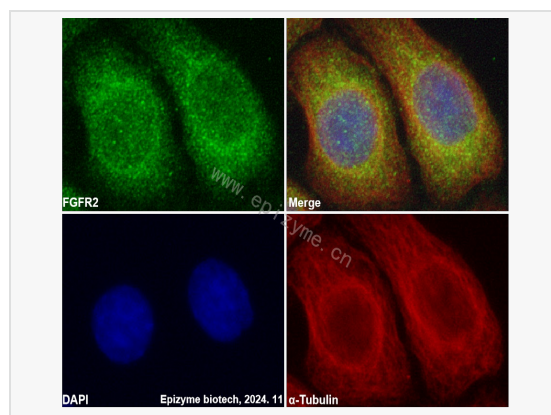
Lysates/proteins at 10 μ g per lane.

Secondary antibody: Goat Anti-Rabbit IgG(H+L), HRP Conjugated (Cat. No. LF102) at 1:5,000 dilution

Predicted band size: 92 kDa

Observed band size: 145 kDa

Developed using the ECL technique (Cat. No. SQ201).



Immunofluorescence - Anti-FGFR2 Rabbit mAb [30N36N11]

Sample: HeLa cells

The cells were fixed with 4% paraformaldehyde (10 min), permeabilized with 0.5% Triton X-100 for 10 minutes and then blocked with 5% BSA in 0.1% PBS-Tween for 0.5 hours.

Primary antibodies: R014260 at 1:100 dilution and α -tubulin Mouse Monoclonal

Antibody (Cat. No. LF209) at 1:100 dilution

Secondary antibodies: Goat anti-Rabbit (488) at 1:1,000 dilution (shown in green) and Goat anti-Mouse (555) at 1:1,000 dilution (shown in red)

Nuclei were stained with DAPI (shown in blue).