

Anti-ATF3 Rabbit mAb

Purified Recombinant Rabbit Monoclonal Antibody

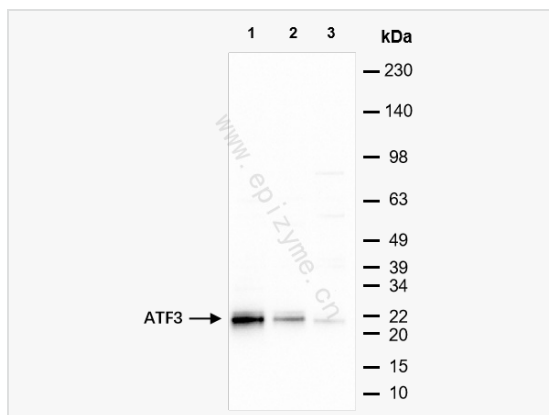
Catalog # R014204

Product Information

Application	ELISA, IF (Cell)/ICC, WB
Reactivity	Human, Mouse
Dilution	WB 1:1,000~1:2,000; IF 1:100~1:200
Host	Rabbit
Clonality	Monoclonal
Clone No.	23Q72M20
Isotype	IgG
Label	Unconjugated
Immunogen	Recombinant protein of human ATF3
Format	Affinity purified monoclonal antibody supplied in PBS with 0.01% sodium azide and 50% glycerol, pH 7.3.
Storage	Shipped on wet ice. Store at -20°C. Stable for 24 months from date of receipt. Aliquoting is unnecessary for -20°C storage.
Precautions	Anti-ATF3 Rabbit mAb [23Q72M20] is for research use only and not for use in diagnostic or therapeutic procedures.

Protein Information

Synonyms	Activating transcription factor 3, ATF3, ATF3_HUMAN, ATF3deltaZip2, ATF3deltaZip2c, ATF3deltaZip3, cAMP dependent transcription factor ATF3, cAMP-dependent transcription factor ATF-3, Cyclic AMP dependent transcription factor ATF3, Cyclic AMP-dependent transcription factor ATF-3.
Calculated MW	Calculated MW: 21 kDa; Observed MW: 21 kDa
Uniprot ID	P18847
Gene ID	467
Background	This gene encodes a member of the mammalian activation transcription factor/cAMP responsive element-binding (CREB) protein family of transcription factors. This gene is induced by a variety of signals, including many of those encountered by cancer cells, and is involved in the complex process of cellular stress response. Multiple transcript variants encoding different isoforms have been found for this gene. It is possible that alternative splicing of this gene may be physiologically important in the regulation of target genes. [provided by RefSeq, Apr 2011]
Cellular Location	Nucleus.



Western Blot - Anti-ATF3 Rabbit mAb [23Q72M20]

All lanes: R014204 at 1:1,000 dilution

Lane 1: Raw264.7 (Mouse mononuclear macrophage leukemia cell) whole cell lysates

Lane 2: C2C12 (Mouse myoblasts epithelial cell) whole cell lysates

Lane 3: A431 (Human epidermoid teratoma cell line) whole cell lysates

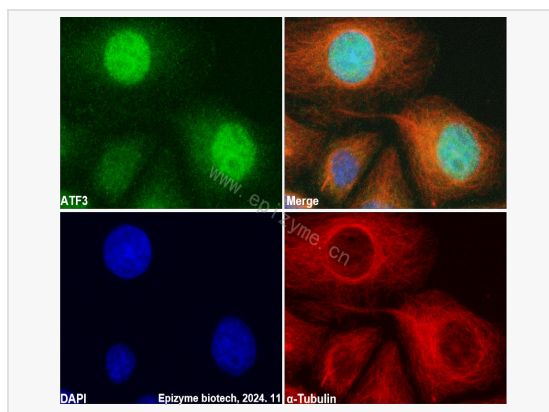
Lysates/proteins at 10 μ g per lane.

Secondary antibody: Goat Anti-Rabbit IgG(H+L), HRP Conjugated (Cat. No. LF102) at 1:5,000 dilution

Predicted band size: 21 kDa

Observed band size: 21 kDa

Developed using the ECL technique (Cat. No. SQ201).



Immunofluorescence - Anti-ATF3 Rabbit mAb [23Q72M20]

Sample: HeLa cells

The cells were fixed with 4% paraformaldehyde (10 min), permeabilized with 0.5% Triton X-100 for 10 minutes and then blocked with 5% BSA in 0.1% PBS-Tween for 0.5 hours.

Primary antibodies: R014204 at 1:100 dilution and α -tubulin Mouse Monoclonal Antibody (Cat. No. LF209) at 1:100 dilution

Secondary antibodies: Goat anti-Rabbit (488) at 1:1,000 dilution (shown in green) and Goat anti-Mouse (555) at 1:1,000 dilution (shown in red)

Nuclei were stained with DAPI (shown in blue).