

Anti-RNF7 Rabbit mAb

Purified Recombinant Rabbit Monoclonal Antibody

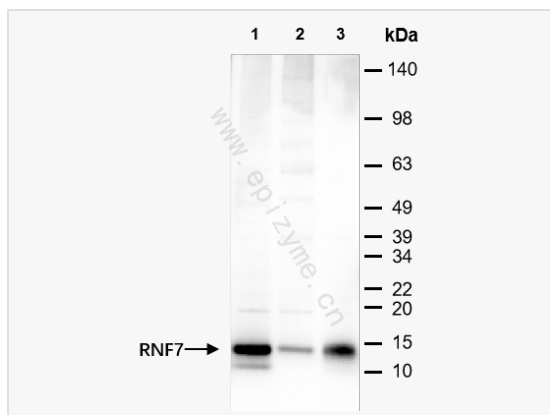
Catalog # R014161

Product Information

Application	WB, IHC-P/IF (Tissue-P), ELISA
Reactivity	Mouse, Rat, Human
Dilution	WB 1:1,000~1:2,000; IHC-P 1:100~1:200; IF 1:100~1:200
Host	Rabbit
Clonality	Monoclonal
Clone No.	68R86B52
Isotype	IgG
Label	Unconjugated
Immunogen	A synthesized peptide derived from human RNF7
Format	Affinity purified monoclonal antibody supplied in PBS with 0.01% sodium azide and 50% glycerol, pH 7.3.
Storage	Shipped on wet ice. Store at -20°C. Stable for 24 months from date of receipt. Aliquoting is unnecessary for -20°C storage.
Precautions	Anti-RNF7 Rabbit mAb [68R86B52] is for research use only and not for use in diagnostic or therapeutic procedures.

Protein Information

Synonyms	CKBBP 1, CKBBP1, CKII beta binding protein 1, CKII beta-binding protein 1, Rbx 2, Rbx2, RBX2_HUMAN, Regulator of cullins 2, RING box protein 2, RING finger protein 7, RING-box protein 2, RNF 7, RNF7, ROC 2, ROC2, SAG, Sensitive to apoptosis gene, Sensitive to apoptosis gene protein, Zinc RING finger protein SAG.
Calculated MW	Calculated MW: 13 kDa; Observed MW: 13 kDa
Uniprot ID	Q9UBF6
Gene ID	9616
Background	Probable component of the SCF (SKP1-CUL1-F-box protein) E3 ubiquitin ligase complex which mediates the ubiquitination and subsequent proteasomal degradation of target proteins involved in cell cycle progression, signal transduction and transcription.
Cellular Location	Cytoplasm. Nucleus.
Tissue Location	Expressed in heart, liver, skeletal muscle and pancreas. At very low levels expressed in brain, placenta and lung.



Western Blot - Anti-RNF7 Rabbit mAb [68R86B52]

All lanes: R014161 at 1:1,000 dilution

Lane 1: C2C12 (Mouse myoblasts epithelial cell) whole cell lysates

Lane 2: A431 (Human epidermoid teratoma cell line) whole cell lysates

Lane 3: T24 (Human bladder cancer epithelial cell) whole cell lysates

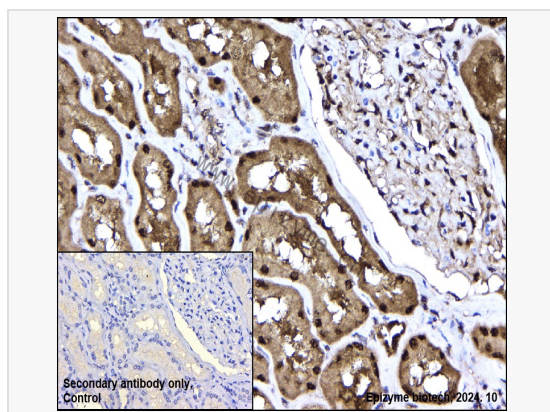
Lysates/proteins at 10 µg per lane.

Secondary antibody: Goat Anti-Rabbit IgG(H+L), HRP Conjugated (Cat. No. LF102) at 1:5,000 dilution

Predicted band size: 13 kDa

Observed band size: 13 kDa

Developed using the ECL technique (Cat. No. SQ201).



Immunohistochemistry - Anti-RNF7 Rabbit mAb [68R86B52]

Sample: Paraformaldehyde-fixed, paraffin embedded human renal carcinoma tissue

Heat mediated antigen retrieval with Tris-EDTA buffer (pH 9.0) for 30 mins.

Primary antibody: R014161 at 1:200 dilution

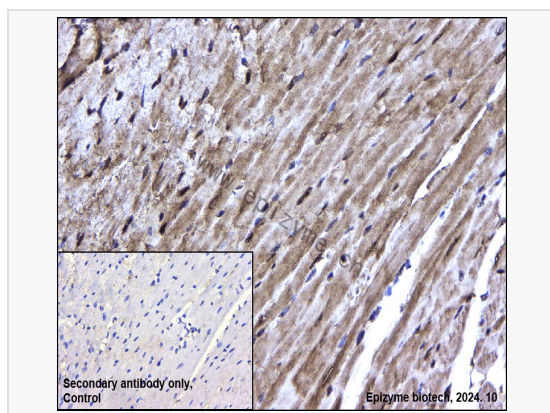
Secondary antibody: Goat Anti-Rabbit IgG (H+L), HRP conjugated at 1:1,000 dilution

DAB was used as the chromogen.

Counter stained with hematoxylin.

Positive/negative staining were presented.

Only the secondary antibody was used as the negative control.



Immunohistochemistry - Anti-RNF7 Rabbit mAb [68R86B52]

Sample: Paraformaldehyde-fixed, paraffin embedded mouse heart tissue

Heat mediated antigen retrieval with Tris-EDTA buffer (pH 9.0) for 30 mins.

Primary antibody: R014161 at 1:200 dilution

Secondary antibody: Goat Anti-Rabbit IgG (H+L), HRP conjugated at 1:1,000 dilution

DAB was used as the chromogen.

Counter stained with hematoxylin.

Positive/negative staining were presented.

Only the secondary antibody was used as the negative control.