

Anti-Phospho-p70 S6 kinase beta 2 (Ser370) Rabbit mAb

Purified Recombinant Rabbit Monoclonal Antibody

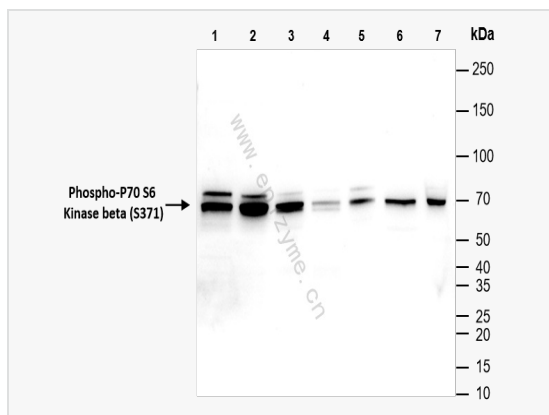
Catalog # R014137

Product Information

Application	ELISA, IF (Cell)/ICC, WB
Reactivity	Human, Mouse, Rat
Dilution	WB 1:1,000~1:2,000; IF 1:100~1:200
Host	Rabbit
Clonality	Monoclonal
Clone No.	79E69C08
Isotype	IgG
Label	Unconjugated
Immunogen	A synthesized peptide derived from human Phospho-P70 S6 Kinase beta (S371)
Format	Affinity purified monoclonal antibody supplied in PBS with 0.01% sodium azide and 50% glycerol, pH 7.3.
Storage	Shipped on wet ice. Store at -20°C. Stable for 24 months from date of receipt. Aliquoting is unnecessary for -20°C storage.
Precautions	Anti-Phospho-p70 S6 kinase beta 2 (Ser370) Rabbit mAb [79E69C08] is for research use only and not for use in diagnostic or therapeutic procedures.

Protein Information

Synonyms	70 kDa ribosomal protein S6 kinase 2, EC 2.7.11.1, KS6B2_HUMAN, p70 beta, p70 ribosomal S6 kinase beta, p70 S6 kinase beta, p70 S6K-beta, p70 S6KB, p70 S6Kbeta, p70(S6K) beta, p70-beta, p70-S6K 2, P70S6K2, p70S6Kb, Ribosomal protein S6 kinase 70kDa, polypeptide 2, Ribosomal protein S6 kinase B2, Ribosomal protein S6 kinase beta 2, Ribosomal protein S6 kinase beta-2, Rps6kb2, S6 kinase related kinase, S6 kinase-related kinase, S6K beta 2, S6K beta, S6K-beta, S6K-beta-2, S6K2, Serine/threonine protein kinase 14 beta, Serine/threonine-protein kinase 14B, SRK, STK14B.
Calculated MW	Calculated MW: 53 kDa; Observed MW: 70 kDa
Uniprot ID	Q9UBS0
Gene ID	6199
Background	Phosphorylates specifically ribosomal protein S6.



Western Blot - Anti-p70 S6 kinase beta 2 (Ser370) Rabbit mAb [79E69C08]

All lanes: R014137 at 1:1,000 dilution

Lane 1: HeLa (Human cervix adenocarcinoma epithelial cell) whole cell lysates

Lane 2: Raw264.7 (Mouse mononuclear macrophage leukemia cell) whole cell lysates

Lane 3: C2C12 (Mouse myoblasts epithelial cell) whole cell lysates

Lane 4: A431 (Human epidermoid teratoma cell line) whole cell lysates

Lane 5: T24 (Human bladder cancer epithelial cell) whole cell lysates

Lane 6: Rat heart whole tissue lysates

Lane 7: Mouse muscle whole tissue lysates

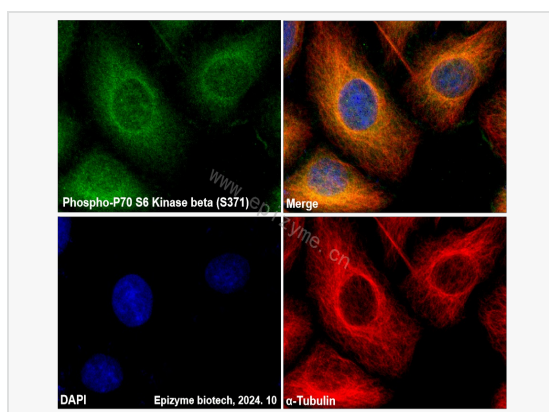
Lysates/proteins at 10 µg per lane.

Secondary antibody: Goat Anti-Rabbit IgG(H+L), HRP Conjugated (Cat. No. LF102) at 1:5,000 dilution

Predicted band size: 53 kDa

Observed band size: 70 kDa

Developed using the ECL technique (Cat. No. SQ201).



Immunofluorescence - Anti-p70 S6 kinase beta 2 (Ser370) Rabbit mAb [79E69C08]

Sample: HeLa cells

The cells were fixed with 4% paraformaldehyde (10 min), permeabilized with 0.5% Triton X-100 for 10 minutes and then blocked with 5% BSA in 0.1% PBS-Tween for 0.5 hours.

Primary antibodies: R014137 at 1:100 dilution and α -tubulin Mouse Monoclonal

Antibody (Cat. No. LF209) at 1:100 dilution

Secondary antibodies: Goat anti-Rabbit (488) at 1:1,000 dilution (shown in green) and

Goat anti-Mouse (555) at 1:1,000 dilution (shown in red)

Nuclei were stained with DAPI (shown in blue).