

Anti-TRIP10 Rabbit mAb

Purified Recombinant Rabbit Monoclonal Antibody

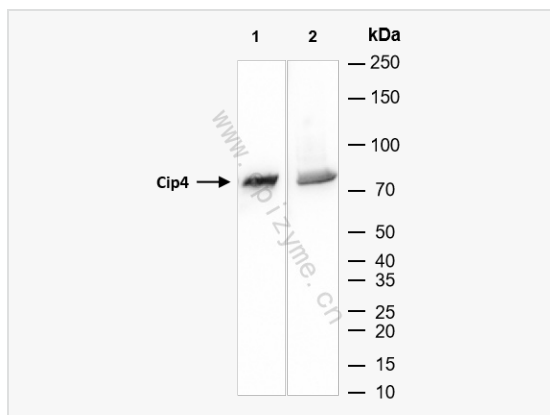
Catalog # R014136

Product Information

Application	WB, ELISA
Reactivity	Mouse
Dilution	WB 1:1,000~1:2,000
Host	Rabbit
Clonality	Monoclonal
Clone No.	70I90R06
Isotype	IgG
Label	Unconjugated
Immunogen	A synthesized peptide derived from human Cip4
Format	Affinity purified monoclonal antibody supplied in PBS with 0.01% sodium azide and 50% glycerol, pH 7.3.
Storage	Shipped on wet ice. Store at -20°C. Stable for 24 months from date of receipt. Aliquoting is unnecessary for -20°C storage.
Precautions	Anti-TRIP10 Rabbit mAb [70I90R06] is for research use only and not for use in diagnostic or therapeutic procedures.

Protein Information

Synonyms	Cdc42 interacting protein 4, Cdc42 interaction protein 4 long isoform, Cdc42-interacting protein 4, CG11341, CG15015 PA, Cip 4, CIP4, CIP4_HUMAN, DCIP4, hSTP, Protein Felic, Salt tolerant protein, Salt tolerator, STOT, STP, Thyroid hormone receptor interactor 10, Thyroid receptor interacting protein 10, Thyroid receptor-interacting protein 10, TR-interacting protein 10, TRIP 10, TRIP-10, trip10, Truncated Cdc42 interaction protein 4.
Calculated MW	Calculated MW: 68 kDa; Observed MW: 75 kDa
Uniprot ID	Q15642
Gene ID	9322
Background	Required for translocation of GLUT4 to the plasma membrane in response to insulin signaling (By similarity).
Cellular Location	Cytoplasm > perinuclear region and Cytoplasm > cytoskeleton. Cytoplasm > cell cortex. Lysosome. Golgi apparatus. Cell membrane. Cell projection > phagocytic cup. Translocates to the plasma membrane in response to insulin stimulation, and this may require active RHOQ (By similarity). Localizes to cortical regions coincident with F-actin, to lysosomes and to sites of phagocytosis in macrophages. Also localizes to the Golgi, and this requires AKAP9.
Tissue Location	Expressed in brain, colon, heart, kidney, liver, lung, megakaryocyte, ovary, pancreas, peripheral blood lymphocytes, placenta, prostate, skeletal muscle, small intestine, spleen, testis, thymus and trachea.



Western Blot - Anti-TRIP10 Rabbit mAb [70I90R06]

All lanes: R014136 at 1:1,000 dilution

Lane 1: C2C12 (Mouse myoblasts epithelial cell) whole cell lysates

Lane 2: Mouse muscle whole tissue lysates

Lysates/proteins at 10 μ g per lane.

Secondary antibody: Goat Anti-Rabbit IgG(H+L), HRP Conjugated (Cat. No. LF102) at 1:5,000 dilution

Predicted band size: 68 kDa

Observed band size: 75 kDa

Developed using the ECL technique (Cat. No. SQ201).