

Anti-Casein Kinase 2 beta Rabbit mAb

Purified Recombinant Rabbit Monoclonal Antibody

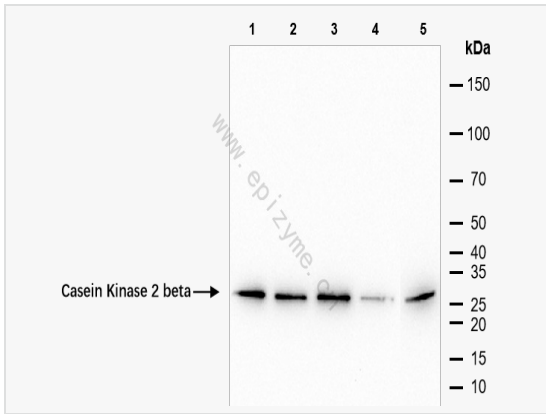
Catalog # R014110

Product Information

Application	WB, IHC-P/IF (Tissue-P), ELISA
Reactivity	Human, Mouse
Dilution	WB 1:1,000~1:2,000; IHC-P 1:100~1:200; IF 1:100~1:200
Host	Rabbit
Clonality	Monoclonal
Clone No.	15A24F83
Isotype	IgG
Label	Unconjugated
Immunogen	A synthesized peptide derived from human Casein Kinase 2 beta
Format	Affinity purified monoclonal antibody supplied in PBS with 0.01% sodium azide and 50% glycerol, pH 7.3.
Storage	Shipped on wet ice. Store at -20°C. Stable for 24 months from date of receipt. Aliquoting is unnecessary for -20°C storage.
Precautions	Anti-Casein Kinase 2 beta Rabbit mAb [15A24F83] is for research use only and not for use in diagnostic or therapeutic procedures.

Protein Information

Synonyms	Casein kinase 2 beta polypeptide, Casein kinase II beta subunit, Casein kinase II subunit beta, CK II beta, CK2B, CK2N, CSK2B, CSK2B_HUMAN, CSNK 2B, csnk2b, G5A, MGC138222, MGC138224, Phosvitin, Protein G5a.
Calculated MW	Calculated MW: 25 kDa; Observed MW: 25 kDa
Uniprot ID	P67870
Gene ID	1460
Background	Participates in Wnt signaling (By similarity). Plays a complex role in regulating the basal catalytic activity of the alpha subunit.



Western Blot - Anti-Casein Kinase 2 beta Rabbit mAb [15A24F83]

All lanes: R014110 at 1:1,000 dilution

Lane 1: HeLa (Human cervix adenocarcinoma epithelial cell) whole cell lysates

Lane 2: HepG2 (Human hepatocarcinoma epithelial cell) whole cell lysates

Lane 3: HCT116 (Human colorectal carcinoma epithelial cell) whole cell lysates

Lane 4: A431 (Human epidermoid teratoma cell line) whole cell lysates

Lane 5: Mouse brain whole tissue lysates

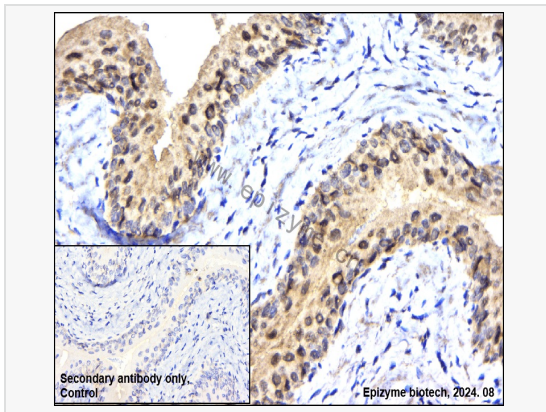
Lysates/proteins at 10 µg per lane.

Secondary antibody: Goat Anti-Rabbit IgG(H+L), HRP Conjugated (Cat. No. LF102) at 1:5,000 dilution

Predicted band size: 25 kDa

Observed band size: 25 kDa

Developed using the ECL technique (Cat. No. SQ201).



Immunohistochemistry - Anti-Casein Kinase 2 beta Rabbit mAb [15A24F83]

Sample: Paraformaldehyde-fixed, paraffin embedded rat bladder tissue

Heat mediated antigen retrieval with Tris-EDTA buffer (pH 9.0) for 30 mins.

Primary antibody: R014110 at 1:200 dilution

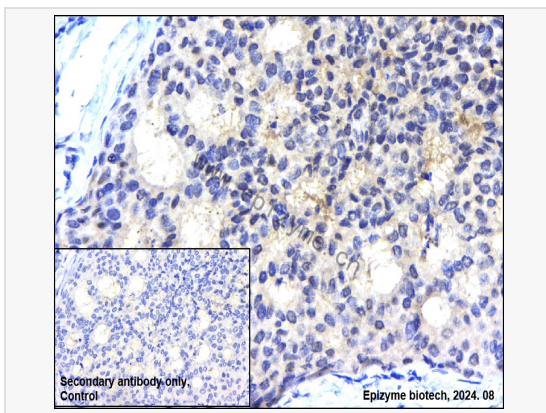
Secondary antibody: Goat Anti-Rabbit IgG (H+L), HRP conjugated at 1:1,000 dilution

DAB was used as the chromogen.

Counter stained with hematoxylin.

Positive/negative staining were presented.

Only the secondary antibody was used as the negative control.



Immunohistochemistry - Anti-Casein Kinase 2 beta Rabbit mAb [15A24F83]

Sample: Paraformaldehyde-fixed, paraffin embedded human breast cancer tissue

Heat mediated antigen retrieval with Tris-EDTA buffer (pH 9.0) for 30 mins.

Primary antibody: R014110 at 1:200 dilution

Secondary antibody: Goat Anti-Rabbit IgG (H+L), HRP conjugated at 1:1,000 dilution

DAB was used as the chromogen.

Counter stained with hematoxylin.

Positive/negative staining were presented.

Only the secondary antibody was used as the negative control.