

Anti-PRMT5 Rabbit mAb

Purified Recombinant Rabbit Monoclonal Antibody

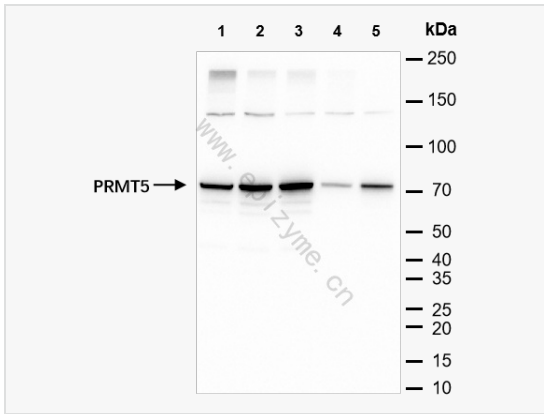
Catalog # R014100

Product Information

Application	WB, IHC-P/IF (Tissue-P), IF (Cell)/ICC, ELISA
Reactivity	Mouse, Rat, Human
Dilution	WB 1:1,000~1:2,000; IHC-P 1:100~1:200; IF 1:100~1:200
Host	Rabbit
Clonality	Monoclonal
Clone No.	12E45R27
Isotype	IgG
Label	Unconjugated
Immunogen	A synthesized peptide derived from human PRMT5
Format	Affinity purified monoclonal antibody supplied in PBS with 0.01% sodium azide and 50% glycerol, pH 7.3.
Storage	Shipped on wet ice. Store at -20°C. Stable for 24 months from date of receipt. Aliquoting is unnecessary for -20°C storage.
Precautions	Anti-PRMT5 Rabbit mAb [12E45R27] is for research use only and not for use in diagnostic or therapeutic procedures.

Protein Information

Synonyms	72 kDa IClN binding protein, 72 kDa IClN-binding protein, ANM5_HUMAN, Histone synthetic lethal 7, S. cerevisiae, homolog of, Histone-arginine N-methyltransferase PRMT5, HMT1 hnRNP methyltransferase like 5, HOMOLOG OF; SKB1, HRMT1L5, IBP72, Jak-binding protein 1, JBP 1, JBP1, PRMT 5, PRMT5, Protein arginine methyltransferase 5, Protein arginine N-methyltransferase 5, Protein arginine N-methyltransferase 5 N terminally processed, Protein arginine N-methyltransferase 5, S. POMBE, S. POMBE HOMOLOG OF; SKB1, SHK1 KINASE BINDING PROTEIN 1, Shk1 kinase binding protein 1 homolog, Shk1 kinase-binding protein 1 homolog, Shk1 kinase/binding protein 1, S. pombe, homolog of, SKB 1, SKB1, SKB1 homolog, SKB1: SKB1 homolog (S. pombe), SKB1Hs.
Calculated MW	Calculated MW: 73 kDa; Observed MW: 73 kDa
Uniprot ID	O14744
Gene ID	10419
Background	Involved in regulation of cell cycle progression through G2 by negatively regulating Swe1p, a protein tyrosine kinase that phosphorylates and inhibits Cdc28p. An Hsl7p homologue, Skb1, was identified in fission yeast by virtue of its yeast two-hybrid interaction with Shk1p, a p21 (cdc42p/Rac) activated kinase (PAK).
Cellular Location	Cytoplasm. Nucleus.
Tissue Location	Ubiquitous.



Western Blot - Anti-PRMT5 Rabbit mAb [12E45R27]

All lanes: R014100 at 1:1,000 dilution

Lane 1: HEL (Human erythroleukemia cell) whole cell lysates

Lane 2: HepG2 (Human hepatocarcinoma epithelial cell) whole cell lysates

Lane 3: HCT116 (Human colorectal carcinoma epithelial cell) whole cell lysates

Lane 4: A431 (Human epidermoid teratoma cell line) whole cell lysates

Lane 5: T24 (Human bladder cancer epithelial cell) whole cell lysates

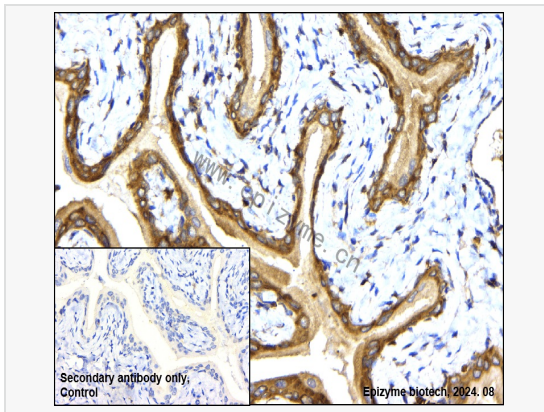
Lysates/proteins at 10 µg per lane.

Secondary antibody: Goat Anti-Rabbit IgG(H+L), HRP Conjugated (Cat. No. LF102) at 1:5,000 dilution

Predicted band size: 73 kDa

Observed band size: 73 kDa

Developed using the ECL technique (Cat. No. SQ201).



Immunohistochemistry - Anti-PRMT5 Rabbit mAb [12E45R27]

Sample: Paraformaldehyde-fixed, paraffin embedded rat bladder tissue

Heat mediated antigen retrieval with Tris-EDTA buffer (pH 9.0) for 30 mins.

Primary antibody: R014100 at 1:200 dilution

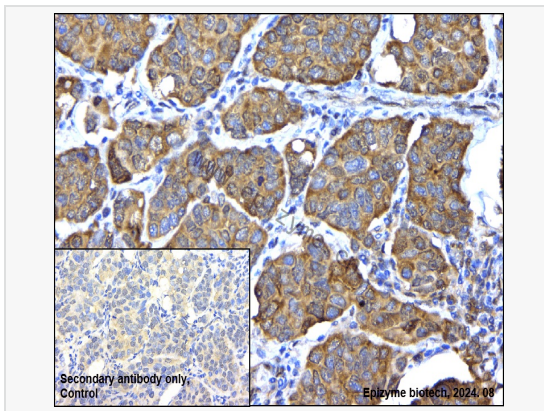
Secondary antibody: Goat Anti-Rabbit IgG (H+L), HRP conjugated at 1:1,000 dilution

DAB was used as the chromogen.

Counter stained with hematoxylin.

Positive/negative staining were presented.

Only the secondary antibody was used as the negative control.



Immunohistochemistry - Anti-PRMT5 Rabbit mAb [12E45R27]

Sample: Paraformaldehyde-fixed, paraffin embedded human ovarian cancer tissue

Heat mediated antigen retrieval with Tris-EDTA buffer (pH 9.0) for 30 mins.

Primary antibody: R014100 at 1:200 dilution

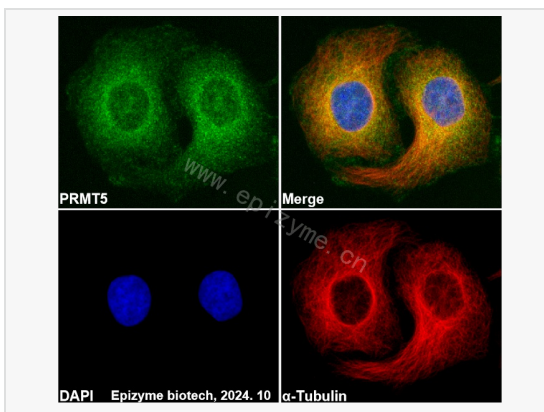
Secondary antibody: Goat Anti-Rabbit IgG (H+L), HRP conjugated at 1:1,000 dilution

DAB was used as the chromogen.

Counter stained with hematoxylin.

Positive/negative staining were presented.

Only the secondary antibody was used as the negative control.



Immunofluorescence - Anti-PRMT5 Rabbit mAb [12E45R27]

Sample: HeLa cells

The cells were fixed with 4% paraformaldehyde (10 min), permeabilized with 0.5% Triton X-100 for 10 minutes and then blocked with 5% BSA in 0.1% PBS-Tween for 0.5 hours.

Primary antibodies: R014100 at 1:100 dilution and α -tubulin Mouse Monoclonal Antibody (Cat. No. LF209) at 1:100 dilution

Secondary antibodies: Goat anti-Rabbit (488) at 1:1,000 dilution (shown in green) and

Goat anti-Mouse (555) at 1:1,000 dilution (shown in red)

Nuclei were stained with DAPI (shown in blue).