

## Anti-PPIC Rabbit mAb

Purified Recombinant Rabbit Monoclonal Antibody

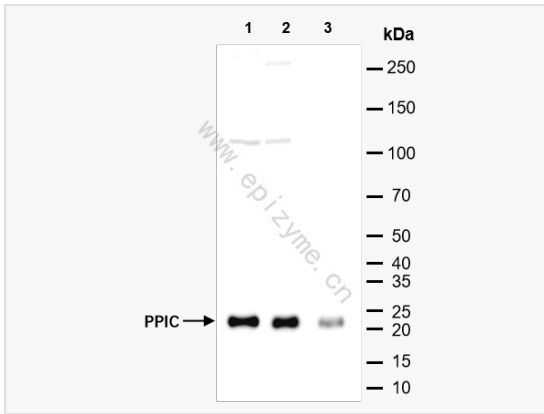
Catalog # R014096

### Product Information

Application	IF (Cell)/ICC, ELISA, WB, IHC-P/IF (Tissue-P)
Reactivity	Human
Dilution	WB 1:1,000~1:5,000; IHC-P 1:100~1:200; IF 1:100~1:200
Host	Rabbit
Clonality	Monoclonal
Clone No.	58I37G20
Isotype	IgG
Label	Unconjugated
Immunogen	A synthesized peptide derived from human PPIC
Format	Affinity purified monoclonal antibody supplied in PBS with 0.01% sodium azide and 50% glycerol, pH 7.3.
Storage	Shipped on wet ice. Store at -20°C. Stable for 24 months from date of receipt. Aliquoting is unnecessary for -20°C storage.
Precautions	Anti-PPIC Rabbit mAb [58I37G20] is for research use only and not for use in diagnostic or therapeutic procedures.

### Protein Information

Synonyms	Cyclophilin C, CYPC, MGC3673, Parvulin, Peptidyl prolyl cis trans isomerase C, Peptidyl-prolyl cis-trans isomerase C, Peptidylprolyl isomerase C (cyclophilin C), peptidylprolyl isomerase C, PPIase C, ppiC, PPIC_HUMAN, Rotamase C.
Calculated MW	Calculated MW: 23 kDa; Observed MW: 23 kDa
Uniprot ID	P45877
Gene ID	5480
Background	The protein encoded by this gene is a member of the peptidyl-prolyl cis-trans isomerase (PPIase) family. PPIases catalyze the cis-trans isomerization of proline imidic peptide bonds in oligopeptides and accelerate the folding of proteins. Similar to other PPIases, this protein can bind immunosuppressant cyclosporin A. [provided by RefSeq, Jul 2008]
Cellular Location	Cytoplasm.



Western Blot - Anti-PPIC Rabbit mAb [58I37G20]

All lanes: R014096 at 1:5,000 dilution

Lane 1: HeLa (Human cervix adenocarcinoma epithelial cell) whole cell lysates

Lane 2: A431 (Human epidermoid teratoma cell line) whole cell lysates

Lane 3: T24 (Human bladder cancer epithelial cell) whole cell lysates

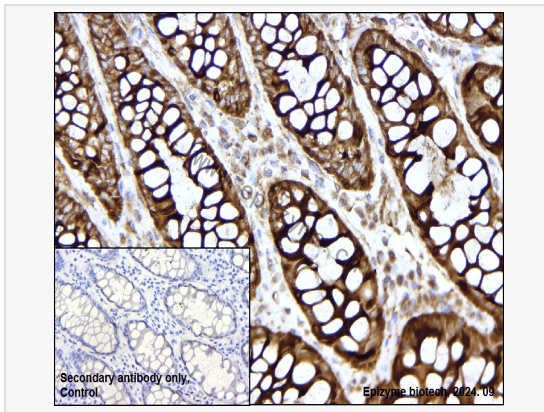
Lysates/proteins at 10 µg per lane.

Secondary antibody: Goat Anti-Rabbit IgG(H+L), HRP Conjugated (Cat. No. LF102) at 1:5,000 dilution

Predicted band size: 23 kDa

Observed band size: 23 kDa

Developed using the ECL technique (Cat. No. SQ201).



Immunohistochemistry - Anti-PPIC Rabbit mAb [58I37G20]

Sample: Paraformaldehyde-fixed, paraffin embedded human colonic cancer tissue

Heat mediated antigen retrieval with Tris-EDTA buffer (pH 9.0) for 30 mins.

Primary antibody: R014096 at 1:200 dilution

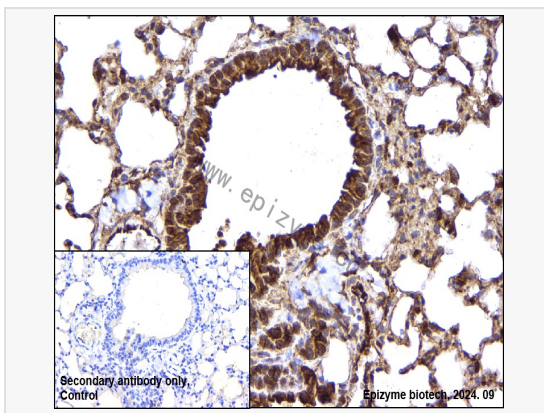
Secondary antibody: Goat Anti-Rabbit IgG (H+L), HRP conjugated at 1:1,000 dilution

DAB was used as the chromogen.

Counter stained with hematoxylin.

Positive/negative staining were presented.

Only the secondary antibody was used as the negative control.



Immunohistochemistry - Anti-PPIC Rabbit mAb [58I37G20]

Sample: Paraformaldehyde-fixed, paraffin embedded mouse lung tissue

Heat mediated antigen retrieval with Tris-EDTA buffer (pH 9.0) for 30 mins.

Primary antibody: R014096 at 1:200 dilution

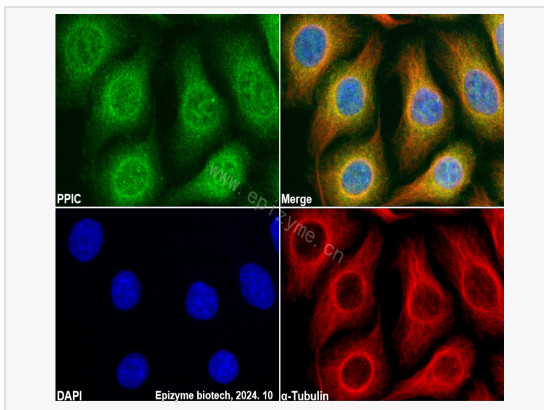
Secondary antibody: Goat Anti-Rabbit IgG (H+L), HRP conjugated at 1:1,000 dilution

DAB was used as the chromogen.

Counter stained with hematoxylin.

Positive/negative staining were presented.

Only the secondary antibody was used as the negative control.



Immunofluorescence - Anti-PPIC Rabbit mAb [58I37G20]

Sample: HeLa cells

The cells were fixed with 4% paraformaldehyde (10 min), permeabilized with 0.5% Triton X-100 for 10 minutes and then blocked with 5% BSA in 0.1% PBS-Tween for 0.5 hours.

Primary antibodies: R014096 at 1:100 dilution and  $\alpha$ -tubulin Mouse Monoclonal Antibody (Cat. No. LF209) at 1:100 dilution

Secondary antibodies: Goat anti-Rabbit (488) at 1:1,000 dilution (shown in green) and

Goat anti-Mouse (555) at 1:1,000 dilution (shown in red)

Nuclei were stained with DAPI (shown in blue).