

Anti-Cyclin D3 Rabbit mAb

Purified Recombinant Rabbit Monoclonal Antibody

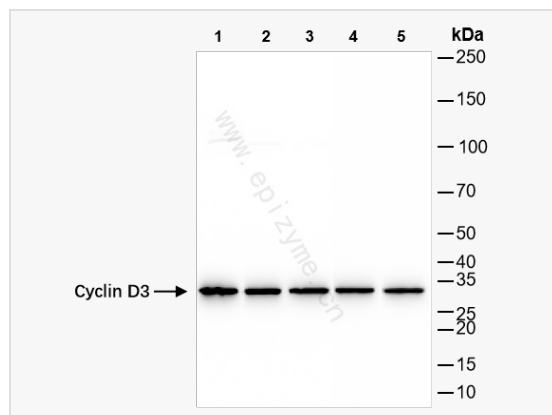
Catalog # R013981

Product Information

Application	ELISA, WB
Reactivity	Rat, Human, Mouse
Dilution	WB 1:1,000~1:2,000
Host	Rabbit
Clonality	Monoclonal
Clone No.	62Q59E60
Isotype	IgG
Label	Unconjugated
Immunogen	A synthesized peptide derived from human Cyclin D3
Format	Affinity purified monoclonal antibody supplied in PBS with 0.01% sodium azide and 50% glycerol, pH 7.3.
Storage	Shipped on wet ice. Store at -20°C. Stable for 24 months from date of receipt. Aliquoting is unnecessary for -20°C storage.
Precautions	Anti-Cyclin D3 Rabbit mAb [62Q59E60] is for research use only and not for use in diagnostic or therapeutic procedures.

Protein Information

Synonyms	CCND 3, Cend3, CCND3_HUMAN, CyclinD3, D3 type cyclin, G1 S specific cyclin D3, G1/S specific cyclin D3, G1/S-specific cyclin-D3.
Calculated MW	Calculated MW: 35 kDa; Observed MW: 32 kDa
Uniprot ID	P30281
Gene ID	896
Background	Regulatory component of the cyclin D3-CDK4 (DC) complex that phosphorylates and inhibits members of the retinoblastoma (RB) protein family including Rb1 and regulates the cell-cycle during G1/S transition.
Cellular Location	Nucleus. Cytoplasm. Membrane. Cyclin D-CDK4 complexes accumulate at the nuclear membrane and are then translocated to the nucleus through interaction with KIP/CIP family members.



Western Blot - Anti-Cyclin D3 Rabbit mAb [62Q59E60]

All lanes: R013981 at 1:1,000 dilution

Lane 1: HeLa (Human cervix adenocarcinoma epithelial cell) whole cell lysates

Lane 2: HCT116 (Human colorectal carcinoma epithelial cell) whole cell lysates

Lane 3: A431 (Human epidermoid teratoma cell line) whole cell lysates

Lane 4: Rat heart whole tissue lysates

Lane 5: Rat spleen whole tissue lysates

Lysates/proteins at 10 μ g per lane.

Secondary antibody: Goat Anti-Rabbit IgG(H+L), HRP Conjugated (Cat. No. LF102) at 1:5,000 dilution

Predicted band size: 35 kDa

Observed band size: 32 kDa

Developed using the ECL technique (Cat. No. SQ201).