

## Anti-Torsin A Rabbit mAb

Purified Recombinant Rabbit Monoclonal Antibody

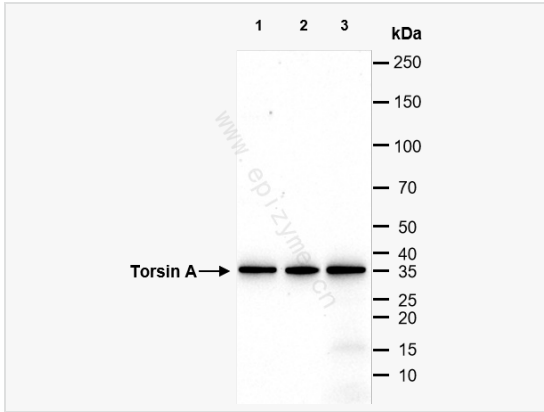
Catalog # R013956

### Product Information

Application	WB, IHC-P/IF (Tissue-P), ELISA
Reactivity	Human, Rat, Mouse
Dilution	WB 1:1,000~1:2,000; IHC-P 1:100~1:200; IF 1:100~1:200
Host	Rabbit
Clonality	Monoclonal
Clone No.	50B53A66
Isotype	IgG
Label	Unconjugated
Immunogen	A synthesized peptide derived from human Torsin A
Format	Affinity purified monoclonal antibody supplied in PBS with 0.01% sodium azide and 50% glycerol, pH 7.3.
Storage	Shipped on wet ice. Store at -20°C. Stable for 24 months from date of receipt. Aliquoting is unnecessary for -20°C storage.
Precautions	Anti-Torsin A Rabbit mAb [50B53A66] is for research use only and not for use in diagnostic or therapeutic procedures.

### Protein Information

Synonyms	DQ2, Dystonia 1, Dystonia 1 protein, Dystonia 1 torsion, Dyt1, TOR1A, TOR1A_HUMAN, Torsin 1A, Torsin A, Torsin family 1 member A, Torsin family 1, member A (torsin A), Torsin-1A.
Calculated MW	Calculated MW: 37 kDa; Observed MW: 35 kDa
Uniprot ID	O14656
Gene ID	1861
Background	The neurological condition Dystonia is associated with sustained muscle contractions and abnormal posturing. TorsinA, torsinB, torp2A and torp3A belong to the family of ATPases associated with cellular activities (AAA+) and mutations in torsinA cause early onset dystonia. TorsinA has been shown to suppress intracellular protein aggregation in <i>C. elegans</i> and possesses chaperon activity. Interestingly, torsinA is highly expressed in dopaminergic neurons and associates with alpha-synuclein in Lewy bodies, which pathologically characterize Parkinson's Disease.
Cellular Location	Endoplasmic reticulum lumen. Nucleus membrane. Note=Mainly located in the lumen of the endoplasmic reticulum. The association with nuclear envelope is mediated by the interaction with TOR1AIP2. The Glu-303 del variant is lumenally-oriented in discrete large spheroid intracellular structures rather than in the endoplasmic reticulum.
Tissue Location	Widely expressed. Highest levels in kidney and liver. Not detected in spleen. In the brain, high levels found in the dopaminergic neurons of the substantia nigra pars compacta, as well as in the neocortex, hippocampus and cerebellum. Also high expression in the spinal cord.



Western Blot - Anti-Torsin A Rabbit mAb [50R53A66]

All lanes: R013956 at 1:1,000 dilution

Lane 1: A431 (Human epidermoid teratoma cell line) whole cell lysates

Lane 2: T24 (Human bladder cancer epithelial cell) whole cell lysates

Lane 3: Rat spleen whole tissue lysates

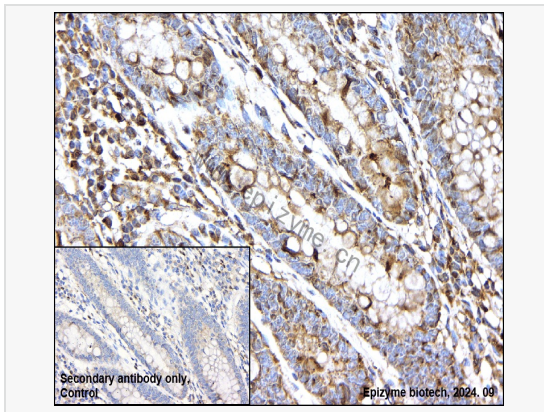
Lysates/proteins at 10 µg per lane.

Secondary antibody: Goat Anti-Rabbit IgG(H+L), HRP Conjugated (Cat. No. LF102) at 1:5,000 dilution

Predicted band size: 37 kDa

Observed band size: 35 kDa

Developed using the ECL technique (Cat. No. SQ201).



Immunohistochemistry - Anti-Torsin A Rabbit mAb [50B53A66]

Sample: Paraformaldehyde-fixed, paraffin embedded human gastric cancer tissue

Heat mediated antigen retrieval with Tris-EDTA buffer (pH 9.0) for 30 mins.

Primary antibody: R013956 at 1:200 dilution

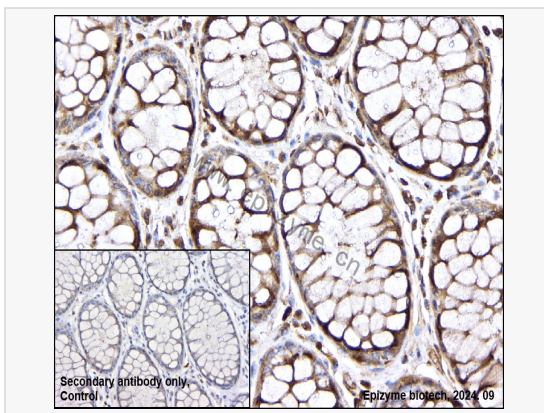
Secondary antibody: Goat Anti-Rabbit IgG (H+L), HRP conjugated at 1:1,000 dilution

DAB was used as the chromogen.

Counter stained with hematoxylin.

Positive/negative staining were presented.

Only the secondary antibody was used as the negative control.



Immunohistochemistry - Anti-Torsin A Rabbit mAb [50B53A66]

Sample: Paraformaldehyde-fixed, paraffin embedded human colonic cancer tissue

Heat mediated antigen retrieval with Tris-EDTA buffer (pH 9.0) for 30 mins.

Primary antibody: R013956 at 1:200 dilution

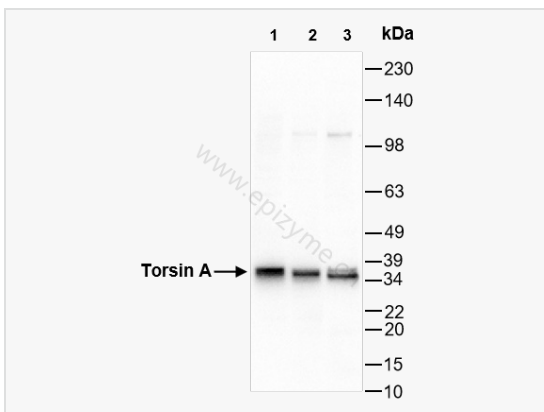
Secondary antibody: Goat Anti-Rabbit IgG (H+L), HRP conjugated at 1:1,000 dilution

DAB was used as the chromogen.

Counter stained with hematoxylin.

Positive/negative staining were presented.

Only the secondary antibody was used as the negative control.



Western Blot -Anti-Torsin A Rabbit mAb [50B53A66]

All lanes: R013956 at 1:1,000 dilution

Lane 1: C2C12 (Mouse myoblasts epithelial cell) whole cell lysates

Lane 2: Raw264.7 (Mouse mononuclear macrophage leukemia cell) whole cell lysates

Lane 3: PC-12 (Rat adrenal pheochromocytoma epithelial cell) whole cell lysates

Lysates/proteins at 10 µg per lane.

Secondary antibody: Goat Anti-Rabbit IgG(H+L), HRP Conjugated (Cat. No. LF102) at 1:5,000 dilution

Predicted band size: 37 kDa

Observed band size: 35 kDa

Developed using the ECL technique (Cat. No. SQ201).