

Anti-ERp57 Rabbit mAb

Purified Recombinant Rabbit Monoclonal Antibody

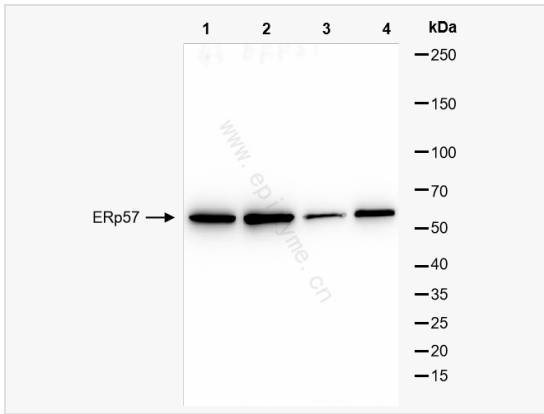
Catalog # R013910

Product Information

Application	WB, IHC-P/IF (Tissue-P), ELISA
Reactivity	Human
Dilution	WB 1:1,000~1:2,000; IHC-P 1:100~1:200; IF 1:100~1:200
Host	Rabbit
Clonality	Monoclonal
Clone No.	52S98N13
Isotype	IgG
Label	Unconjugated
Immunogen	A synthesized peptide derived from human ERp57
Format	Affinity purified monoclonal antibody supplied in PBS with 0.01% sodium azide and 50% glycerol, pH 7.3.
Storage	Shipped on wet ice. Store at -20°C. Stable for 24 months from date of receipt. Aliquoting is unnecessary for -20°C storage.
Precautions	Anti-ERp57 Rabbit mAb [52S98N13] is for research use only and not for use in diagnostic or therapeutic procedures.

Protein Information

Synonyms	58 kDa glucose regulated protein, 58 kDa glucose-regulated protein, 58 kDa microsomal protein, Disulfide isomerase ER 60, Disulfide isomerase ER-60, Endoplasmic reticulum resident protein 57, Endoplasmic reticulum resident protein 60, ER p57, ER protein 57, ER protein 60, ERp 57, ERp57, ERp60, ERp61, Glucose Regulated Protein 58 Kd, GRP 57, GRP 58, GRP57, HsT17083, p58, PDIA 3, PDIA3, PDIA3_HUMAN, Phospholipase C alpha, PI PLC, Protein disulfide isomerase A3, Protein disulfide isomerase family A member 3, Protein disulfide-isomerase A3.
Calculated MW	Calculated MW: 61 kDa; Observed MW: 57 kDa
Uniprot ID	P30101
Gene ID	2923
Background	Detected in the flagellum and head region of spermatozoa (at protein level).
Cellular Location	Endoplasmic reticulum lumen. Melanosome. Identified by mass spectrometry in melanosome fractions from stage I to stage IV.
Tissue Location	Detected in the flagellum and head region of spermatozoa (at protein level).



Western Blot - Anti-ERp57 Rabbit mAb [52S98N13]

All lanes: R013910 at 1:2,000 dilution

Lane 1: HeLa (Human cervix adenocarcinoma epithelial cell) whole cell lysates

Lane 2: HepG2 (Human hepatocellular carcinoma epithelial cell) whole cell lysates

Lane 3: HCT116 (Human colorectal carcinoma epithelial cell) whole cell lysates

Lane 4: A431 (Human epidermoid teratoma cell line) whole cell lysates

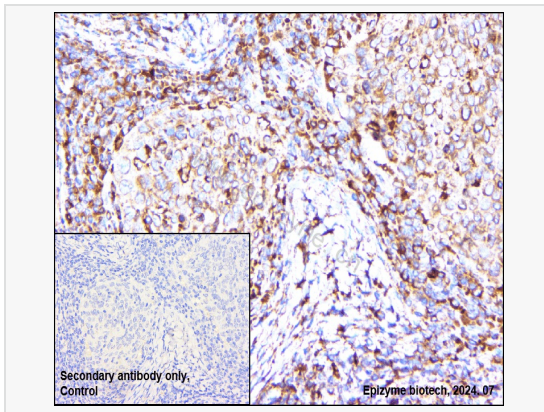
Lysates/proteins at 10 µg per lane.

Secondary antibody: Goat Anti-Rabbit IgG(H+L), HRP Conjugated (Cat. No. LF102) at 1:5,000 dilution

Predicted band size: 61 kDa

Observed band size: 57 kDa

Developed using the ECL technique (Cat. No. SQ201).



Immunohistochemistry - Anti-ERp57 Rabbit mAb [52S98N13]

Sample: Paraformaldehyde-fixed, paraffin embedded human cervical cancer tissue

Heat mediated antigen retrieval with Tris-EDTA buffer (pH 9.0) for 30 mins.

Primary antibody: R013910 at 1:200 dilution

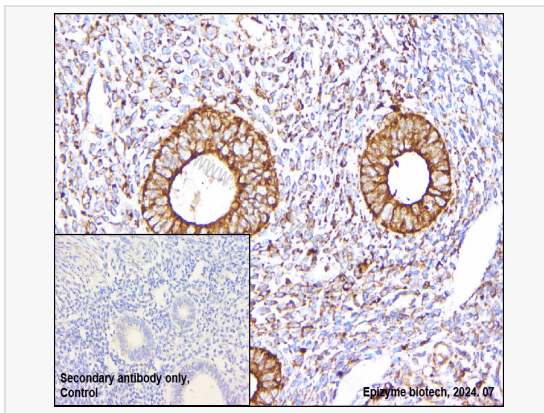
Secondary antibody: Goat Anti-Rabbit IgG (H+L), HRP conjugated at 1:1,000 dilution

DAB was used as the chromogen.

Counter stained with hematoxylin.

Positive/negative staining were presented.

Only the secondary antibody was used as the negative control.



Immunohistochemistry - Anti-ERp57 Rabbit mAb [52S98N13]

Sample: Paraformaldehyde-fixed, paraffin embedded human endometrial carcinoma tissue

Heat mediated antigen retrieval with Tris-EDTA buffer (pH 9.0) for 30 mins.

Primary antibody: R013910 at 1:200 dilution

Secondary antibody: Goat Anti-Rabbit IgG (H+L), HRP conjugated at 1:1,000 dilution

DAB was used as the chromogen.

Counter stained with hematoxylin.

Positive/negative staining were presented.

Only the secondary antibody was used as the negative control.