

Anti-EDG1 Rabbit mAb

Purified Recombinant Rabbit Monoclonal Antibody

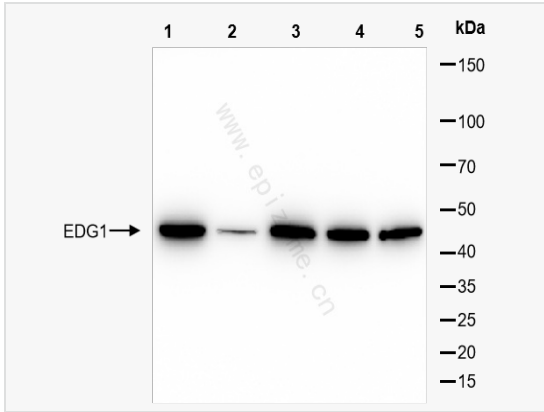
Catalog # R013899

Product Information

Application	IHC-P/IF (Tissue-P), WB, ELISA
Reactivity	Rat, Human, Mouse
Dilution	WB 1:1,000~1:10,000; IHC-P 1:100~1:200; IF 1:100~1:200
Host	Rabbit
Clonality	Monoclonal
Clone No.	76F99R52
Isotype	IgG
Label	Unconjugated
Immunogen	A synthesized peptide derived from human EDG1
Format	Affinity purified monoclonal antibody supplied in PBS with 0.01% sodium azide and 50% glycerol, pH 7.3.
Storage	Shipped on wet ice. Store at -20°C. Stable for 24 months from date of receipt. Aliquoting is unnecessary for -20°C storage.
Precautions	Anti-EDG1 Rabbit mAb [76F99R52] is for research use only and not for use in diagnostic or therapeutic procedures.

Protein Information

Synonyms	CD363, CHEDG 1, CHEDG1, D1S3362, ECGF 1, ECGF1, EDG 1, EDG1, endothelial differentiation G protein coupled receptor 1, Endothelial differentiation G-protein coupled receptor 1, Endothelial differentiation sphingolipid G protein coupled receptor 1, FLJ58121, G protein coupled sphingolipid receptor, g protein-coupled receptor edg-1, S1P receptor 1, S1P receptor Edg 1, S1P receptor Edg-1, S1P receptor Edg1, S1P(1) receptor, S1P1, s1pr1, S1PR1_HUMAN, sphingolipid g-protein-coupled receptor 1, Sphingosine 1 phosphate receptor Edg 1, Sphingosine 1 phosphate receptor EDG1, sphingosine 1-phosphate receptor 1, Sphingosine 1-phosphate receptor 1, Sphingosine 1-phosphate receptor Edg-1, Sphingosine 1phosphate receptor type 1 S1P1.
Calculated MW	Calculated MW: 43 kDa; Observed MW: 43 kDa
Uniprot ID	P21453
Background	Receptor for the lysosphingolipid sphingosine 1-phosphate (S1P). S1P is a bioactive lysophospholipid that elicits diverse physiological effect on most types of cells and tissues. This inducible epithelial cell G-protein-coupled receptor may be involved in the processes that regulate the differentiation of endothelial cells.
Cellular Location	Cell membrane.
Tissue Location	Endothelial cells, and to a lesser extent, in vascular smooth muscle cells, fibroblasts, melanocytes, and cells of epithelioid origin.



Western Blot - Anti-EDG1 Rabbit mAb [76F99R52]

All lanes: R013899 at 1:10,000 dilution

Lane 1: HeLa (Human cervix adenocarcinoma epithelial cell) whole cell lysates

Lane 2: HePG2 (Human hepatocellular carcinoma epithelial cell) whole cell lysates

Lane 3: HCT116 (Human colorectal carcinoma epithelial cell) whole cell lysates

Lane 4: A431 (Human epidermoid teratoma cell line) whole cell lysates

Lane 5: T24 (Human bladder cancer epithelial cell) whole cell lysates

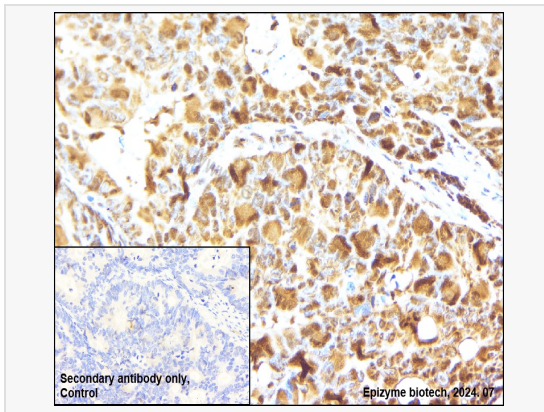
Lysates/proteins at 10 µg per lane.

Secondary antibody: Goat Anti-Rabbit IgG(H+L), HRP Conjugated (Cat. No. LF102) at 1:5,000 dilution

Predicted band size: 43 kDa

Observed band size: 43 kDa

Developed using the ECL technique (Cat. No. SQ201).



Immunohistochemistry - Anti-EDG1 Rabbit mAb [76F99R52]

Sample: Paraformaldehyde-fixed, paraffin embedded human colorectal carcinoma tissue

Heat mediated antigen retrieval with Tris-EDTA buffer (pH 9.0) for 30 mins.

Primary antibody: R013899 at 1:200 dilution

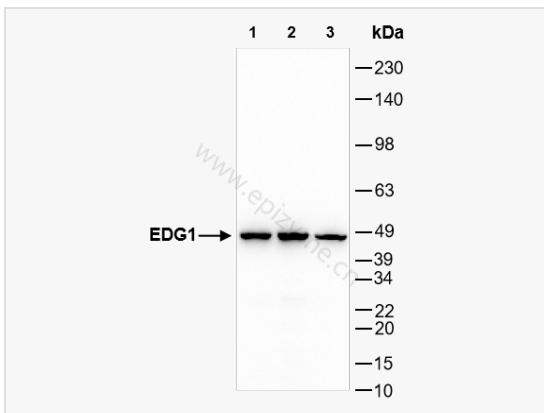
Secondary antibody: Goat Anti-Rabbit IgG (H+L), HRP conjugated at 1:1,000 dilution

DAB was used as the chromogen.

Counter stained with hematoxylin.

Positive/negative staining were presented.

Only the secondary antibody was used as the negative control.



Western Blot -Anti-EDG1 Rabbit mAb [76F99R52]

All lanes: R013899 at 1:10,000 dilution

Lane 1: C2C12 (Mouse myoblasts epithelial cell) whole cell lysates

Lane 2: Raw264.7 (Mouse mononuclear macrophage leukemia cell) whole cell lysates

Lane 3: PC-12(Rat adrenal pheochromocytoma epithelial cell) whole cell lysates

Lysates/proteins at 10 µg per lane.

Secondary antibody: Goat Anti-Rabbit IgG(H+L), HRP Conjugated (Cat. No. LF102) at 1:5,000 dilution

Predicted band size: 43 kDa

Observed band size: 43 kDa

Developed using the ECL technique (Cat. No. SQ201).