

Anti-MINA53 Rabbit mAb

Purified Recombinant Rabbit Monoclonal Antibody

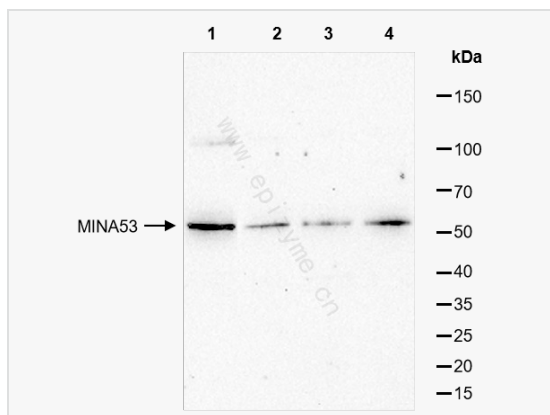
Catalog # R013898

Product Information

Application	WB, ELISA
Reactivity	Human, Mouse, Rat
Dilution	WB 1:1,000~1:3,000
Host	Rabbit
Clonality	Monoclonal
Clone No.	39B21L05
Isotype	IgG
Label	Unconjugated
Immunogen	A synthesized peptide derived from human MINA53
Format	Affinity purified monoclonal antibody supplied in PBS with 0.01% sodium azide and 50% glycerol, pH 7.3.
Storage	Shipped on wet ice. Store at -20°C. Stable for 24 months from date of receipt. Aliquoting is unnecessary for -20°C storage.
Precautions	Anti-MINA53 Rabbit mAb [39B21L05] is for research use only and not for use in diagnostic or therapeutic procedures.

Protein Information

Synonyms	Histone lysine demethylase MINA, MDIG, MINA, NO52, ROX.
Calculated MW	Calculated MW: 53 kDa; Observed MW: 53 kDa
Uniprot ID	Q8IUF8
Gene ID	84864
Background	Involved in cellular proliferation. May play an important role in cell growth and survival. May be involved in ribosome biogenesis, most likely during the assembly process of pre-ribosomal particles.
Cellular Location	Nucleus. Nucleus,nucleolus.
Tissue Location	Expressed in liver, skeletal muscle, heart, pancreas, and placenta. Not detected in brain, lung or kidney. Expressed in several lung cancer tissues, but is barely detected in the adjacent non-cancerous tissues. Also highly expressed in several esophageal squamous cell carcinoma (ESCC), and colon cancer tissues, and in various cancer cell lines.



Western Blot - Anti-MINA53 Rabbit mAb [39B21L05]

All lanes: R013898 at 1:3,000 dilution

Lane 1: HeLa (Human cervix adenocarcinoma epithelial cell) whole cell lysates

Lane 2: HCT116 (Human colorectal carcinoma epithelial cell) whole cell lysates

Lane 3: A431 (Human epidermoid teratoma cell line) whole cell lysates

Lane 4: T24 (Human bladder cancer epithelial cell) whole cell lysates

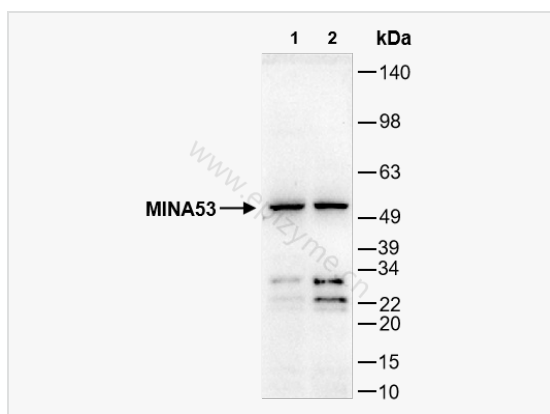
Lysates/proteins at 10 µg per lane.

Secondary antibody: Goat Anti-Rabbit IgG(H+L), HRP Conjugated (Cat. No. LF102) at 1:5,000 dilution

Predicted band size: 53 kDa

Observed band size: 53 kDa

Developed using the ECL technique (Cat. No. SQ201).



Western Blot -Anti-MINA53 Rabbit mAb [39B21L05]

All lanes: R013898 at 1:3,000 dilution

Lane 1: C2C12 (Mouse myoblasts epithelial cell) whole cell lysates

Lane 2: PC-12(Rat adrenal pheochromocytoma epithelial cell)whole cell lysates

Lysates/proteins at 10 µg per lane.

Secondary antibody: Goat Anti-Rabbit IgG(H+L), HRP Conjugated (Cat. No. LF102) at 1:5,000 dilution

Predicted band size: 53 kDa

Observed band size: 53 kDa

Developed using the ECL technique (Cat. No. SQ201).