

## Anti-Caspase 7 Rabbit mAb

Purified Recombinant Rabbit Monoclonal Antibody

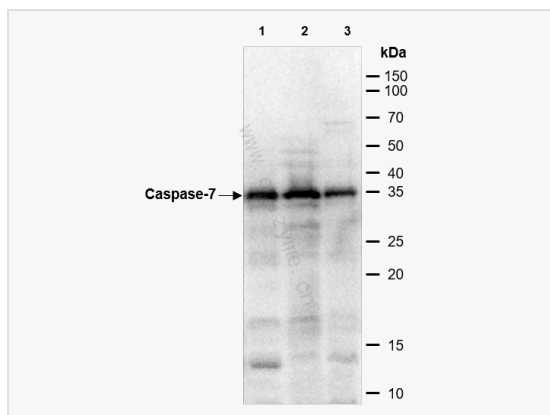
Catalog # R013833

### Product Information

Application	WB, IHC-P/IF (Tissue-P), IF (Cell)/ICC, ELISA
Reactivity	Mouse, Rat
Dilution	WB 1:1,000~1:2,000; IHC-P 1:100~1:200; IF 1:100~1:200
Host	Rabbit
Clonality	Monoclonal
Clone No.	10M50L23
Isotype	IgG
Label	Unconjugated
Immunogen	A synthesized peptide derived from mouse Caspase 7
Format	Affinity purified monoclonal antibody supplied in PBS with 0.01% sodium azide and 50% glycerol, pH 7.3.
Storage	Shipped on wet ice. Store at -20°C. Stable for 24 months from date of receipt. Aliquoting is unnecessary for -20°C storage.
Precautions	Anti-Caspase 7 Rabbit mAb [10M50L23] is for research use only and not for use in diagnostic or therapeutic procedures.

### Protein Information

Synonyms	Apoptotic protease Mch-3, Apoptotic protease MCH3, CASP-7, CASP7, CASP7_HUMAN, Caspase 7, Caspase 7 apoptosis related cysteine peptidase, Caspase-7 subunit p11, Caspase7, CMH 1, CMH-1, CMH1, ICE LAP3, ICE-LAP3, ICE-like apoptotic protease 3, LICE2, MCH3.
Calculated MW	Calculated MW: 34 kDa; Observed MW: 34 kDa
Uniprot ID	P97864
Gene ID	12369
Background	Involved in the activation cascade of caspases responsible for apoptosis execution. Cleaves and activates sterol regulatory element binding proteins (SREBPs). Overexpression promotes programmed cell death .
Cellular Location	Cytoplasm.
Tissue Location	Highly expressed in lung, skeletal muscle, liver, kidney, spleen and heart, and moderately in testis. No expression in the brain.



Western Blot - Anti-Caspase 7 Rabbit mAb [10M50L23]

All lanes: R013833 at 1:2,000 dilution

Lane 1: Rat lung whole tissue lysates

Lane 2: Rat pancreas whole tissue lysates

Lane 3: Balb/c mouse kidney whole tissue lysates

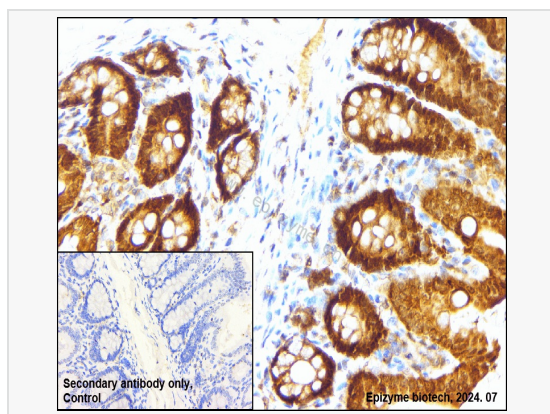
Lysates/proteins at 10 µg per lane.

Secondary antibody: Goat Anti-Rabbit IgG(H+L), HRP Conjugated (Cat. No. LF102) at 1:5,000 dilution

Predicted band size: 34 kDa

Observed band size: 34 kDa

Developed using the ECL technique (Cat. No. SQ201).



Immunohistochemistry - Anti-Caspase 7 Rabbit mAb [10M50L23]

Sample: Paraformaldehyde-fixed, paraffin embedded rat stomach tissue

Heat mediated antigen retrieval with Tris-EDTA buffer (pH 9.0) for 30 mins.

Primary antibody: R013833 at 1:200 dilution

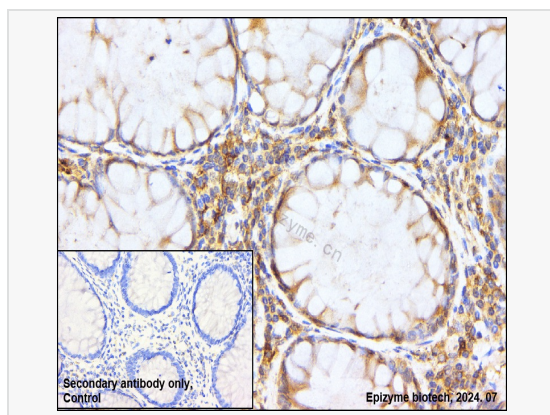
Secondary antibody: Goat Anti-Rabbit IgG (H+L), HRP conjugated at 1:1,000 dilution

DAB was used as the chromogen.

Counter stained with hematoxylin.

Positive/negative staining were presented.

Only the secondary antibody was used as the negative control.



Immunohistochemistry - Anti-Caspase 7 Rabbit mAb [10M50L23]

Sample: Paraformaldehyde-fixed, paraffin embedded human colorectal carcinoma tissue

Heat mediated antigen retrieval with Tris-EDTA buffer (pH 9.0) for 30 mins.

Primary antibody: R013833 at 1:200 dilution

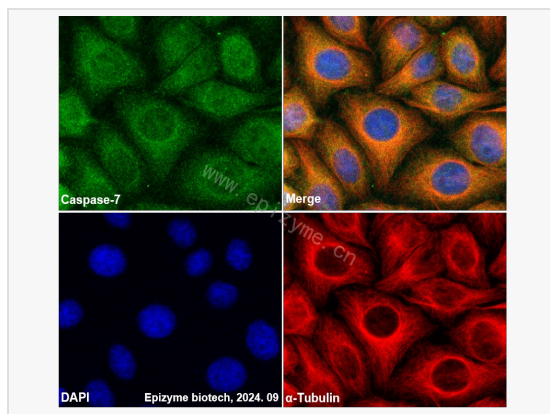
Secondary antibody: Goat Anti-Rabbit IgG (H+L), HRP conjugated at 1:1,000 dilution

DAB was used as the chromogen.

Counter stained with hematoxylin.

Positive/negative staining were presented.

Only the secondary antibody was used as the negative control.



Immunofluorescence - Anti-Caspase 7 Rabbit mAb [10M50L23]

Sample: HeLa cells

The cells were fixed with 4% paraformaldehyde (10 min), permeabilized with 0.5% Triton X-100 for 10 minutes and then blocked with 5% BSA in 0.1% PBS-Tween for 0.5 hours.

Primary antibodies: R013833 at 1:100 dilution and α-tubulin Mouse Monoclonal Antibody (Cat. No. LF209) at 1:100 dilution

Secondary antibodies: Goat anti-Rabbit (488) at 1:1,000 dilution (shown in green) and

Goat anti-Mouse (555) at 1:1,000 dilution (shown in red)

Nuclei were stained with DAPI (shown in blue).