

Anti-Integrin alpha V Rabbit mAb

Purified Recombinant Rabbit Monoclonal Antibody

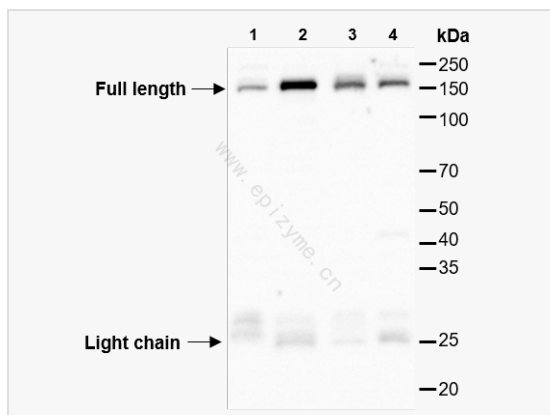
Catalog # R013770

Product Information

Application	WB, ELISA
Reactivity	Rat, Mouse, Human
Dilution	WB 1:1,000~1:2,000
Host	Rabbit
Clonality	Monoclonal
Clone No.	74D62L87
Isotype	IgG
Label	Unconjugated
Immunogen	A synthesized peptide derived from human Integrin alpha V
Format	Affinity purified monoclonal antibody supplied in PBS with 0.01% sodium azide and 50% glycerol, pH 7.3.
Storage	Shipped on wet ice. Store at -20°C. Stable for 24 months from date of receipt. Aliquoting is unnecessary for -20°C storage.
Precautions	Anti-Integrin alpha V Rabbit mAb [74D62L87] is for research use only and not for use in diagnostic or therapeutic procedures.

Protein Information

Synonyms	antigen identified by monoclonal antibody L230, CD 51, CD51, DKFZp686A08142, Integrin alpha five, integrin alpha V beta 3, Integrin alpha-5, integrin alpha-V, Integrin alpha-V light chain, integrin alphaVbeta3, integrin, alpha V (vitronectin receptor, alpha polypeptide, antigen CD51), ITAV_HUMAN, ITGAV, MSK 8, Msk8, Vitronectin receptor subunit alpha, VNRA, VTNR.
Calculated MW	Calculated MW: 115 kDa; Observed MW: 150 kDa, 25 kDa
Uniprot ID	P06756
Gene ID	3685
Background	The alpha-V (ITGAV) integrins are receptors for vitronectin, cytotactin, fibronectin, fibrinogen, laminin, matrix metalloproteinase-2, osteopontin, osteomodulin, prothrombin, thrombospondin and vWF. They recognize the sequence R-G-D in a wide array of ligands. In case of HIV-1 infection, the interaction with extracellular viral Tat protein seems to enhance angiogenesis in Kaposi's sarcoma lesions.
Cellular Location	Membrane.



Western Blot - Anti-Integrin alpha V Rabbit mAb [74D62L87]

All lanes: R013770 at 1:2,000 dilution

Lane 1: HeLa (human cervix adenocarcinoma epithelial cell) whole cell lysates

Lane 2: A549 (human non-small cell lung cancer epithelial cell) whole cell lysates

Lane 3: HCT116 (human colorectal carcinoma epithelial cell) whole cell lysates

Lane 4: T24 (human bladder cancer epithelial cell) whole cell lysates

Lysates/proteins at 10 µg per lane.

Secondary antibody: Goat Anti-Rabbit IgG(H+L), HRP Conjugated (Cat. No. LF102) at 1:5,000 dilution

Predicted band size: 115 kDa

Observed band size: 150 kDa, 25 kDa

Developed using the ECL technique (Cat. No. SQ201).