

Anti-EEA1 Rabbit mAb

Purified Recombinant Rabbit Monoclonal Antibody

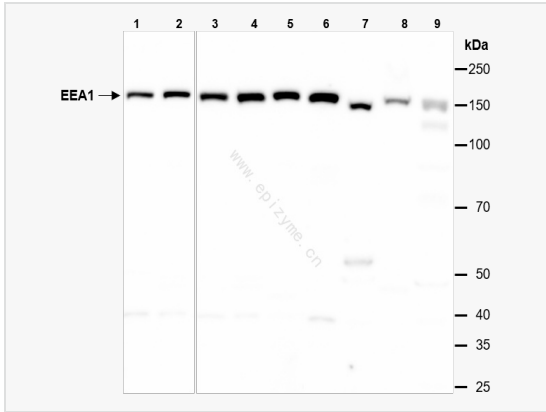
Catalog # R013741

Product Information

Application	WB, IHC-P/IF (Tissue-P), IF (Cell)/ICC, ELISA
Reactivity	Human, Mouse, Rat
Dilution	WB 1:1,000~1:5,000; IHC-P 1:100~1:200; IF 1:100~1:200
Host	Rabbit
Clonality	Monoclonal
Clone No.	31E45C42
Isotype	IgG
Label	Unconjugated
Immunogen	A synthesized peptide derived from human EEA1
Format	Affinity purified monoclonal antibody supplied in PBS with 0.01% sodium azide and 50% glycerol, pH 7.3.
Storage	Shipped on wet ice. Store at -20°C. Stable for 24 months from date of receipt. Aliquoting is unnecessary for -20°C storage.
Precautions	Anti-EEA1 Rabbit mAb [31E45C42] is for research use only and not for use in diagnostic or therapeutic procedures.

Protein Information

Synonyms	Early endosome antigen 1, Early endosome antigen 1, 162kD, Early endosome associated protein, EEA 1, EEA1, EEA1_HUMAN, Endosome associated protein p162, Endosome-associated protein p162, MST105, MSTP105, ZFYVE2, Zinc finger FYVE domain containing protein 2, Zinc finger FYVE domain-containing protein 2.
Calculated MW	Calculated MW: 162 kDa; Observed MW: 162 kDa
Uniprot ID	Q15075
Gene ID	8411
Background	Binds phospholipid vesicles containing phosphatidylinositol 3-phosphate and participates in endosomal trafficking.
Cellular Location	Cytoplasm. Early endosome membrane.



Western Blot - Anti-EEA1 Rabbit mAb [31E45C42]

All lanes: R013741 at 1:5,000 dilution

Lane 1: HeLa (human cervix adenocarcinoma epithelial cell) whole cell lysates

Lane 2: MCF7 (human breast adenocarcinoma epithelial cell) whole cell lysates

Lane 3: HCT116 (human colorectal carcinoma epithelial cell) whole cell lysates

Lane 4: T24 (human bladder cancer epithelial cell) whole cell lysates

Lane 5: HepG2 (human hepatocellular carcinoma epithelial cell) whole cell lysates

Lane 6: SW620 (human colorectal carcinoma epithelial cell) whole cell lysates

Lane 7: Rat kidney whole tissue lysates

Lane 8: Rat spleen whole tissue lysates

Lane 9: Balb/c mouse brain whole tissue lysates

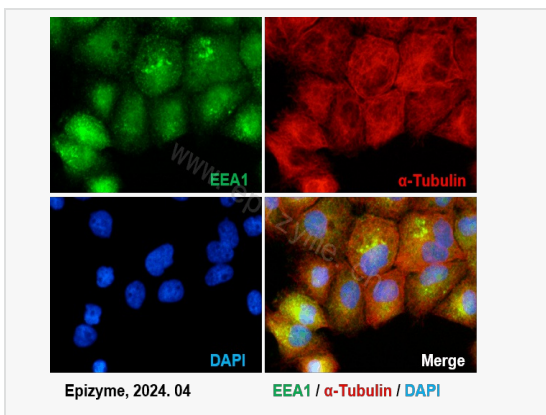
Lysates/proteins at 10 µg per lane.

Secondary antibody: Goat Anti-Rabbit IgG(H+L), HRP Conjugated (Cat. No. LF102) at 1:5,000 dilution

Predicted band size: 162 kDa

Observed band size: 162 kDa

Developed using the ECL technique (Cat. No. SQ201).



Immunofluorescence - Anti-EEA1 Rabbit mAb [31E45C42]

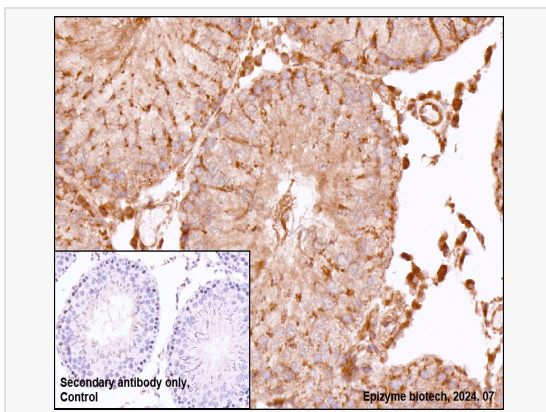
Sample: A431 cells

The cells were fixed with 4% paraformaldehyde (10 min), permeabilized with 0.5% Triton X-100 for 10 minutes and then blocked with 5% BSA in 0.1% PBS-Tween for 0.5 hours.

Primary antibodies: R013741 at 1:100 dilution and α -tubulin Mouse Monoclonal Antibody (Cat. No. LF209) at 1:100 dilution

Secondary antibodies: Goat anti-Rabbit (488) at 1:1,000 dilution (shown in green) and Goat anti-Mouse (CY3) at 1:1,000 dilution (shown in red)

Nuclei were stained with DAPI (shown in blue).



Immunohistochemistry - Anti-EEA1 Rabbit mAb [31E45C42]

Sample: Paraformaldehyde-fixed, paraffin embedded rat testis tissue

Heat mediated antigen retrieval with Tris-EDTA buffer (pH 9.0) for 30 mins.

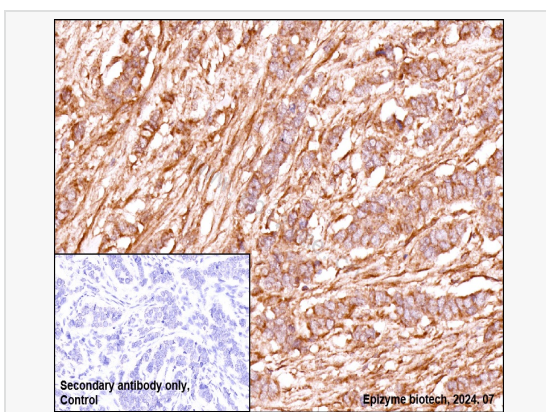
Primary antibody: R013741 at 1:200 dilution

Secondary antibody: Goat Anti-Rabbit IgG (H+L), HRP conjugated at 1:1,000 dilution DAB was used as the chromogen.

Counter stained with hematoxylin.

Positive/negative staining were presented.

Only the secondary antibody was used as the negative control.



Immunohistochemistry - Anti-EEA1 Rabbit mAb [31E45C42]

Sample: Paraformaldehyde-fixed, paraffin embedded human breast carcinoma tissue

Heat mediated antigen retrieval with Tris-EDTA buffer (pH 9.0) for 30 mins.

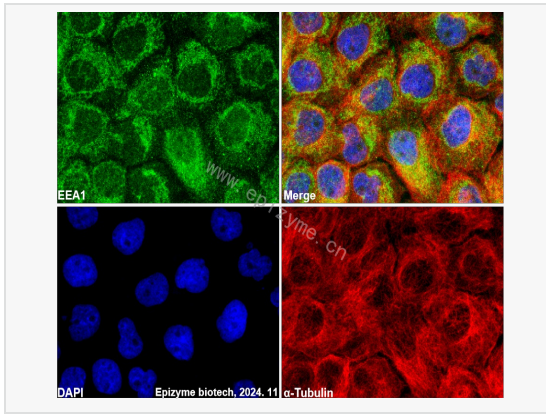
Primary antibody: R013741 at 1:200 dilution

Secondary antibody: Goat Anti-Rabbit IgG (H+L), HRP conjugated at 1:1,000 dilution DAB was used as the chromogen.

Counter stained with hematoxylin.

Positive/negative staining were presented.

Only the secondary antibody was used as the negative control.



Immunofluorescence - Anti-EEA1 Rabbit mAb [31E45C42]

Sample: A431 cells

The cells were fixed with 4% paraformaldehyde (10 min), permeabilized with 0.5% Triton X-100 for 10 minutes and then blocked with 5% BSA in 0.1% PBS-Tween for 0.5 hours.

Primary antibodies: R013741 at 1:100 dilution and α -tubulin Mouse Monoclonal Antibody (Cat. No. LF209) at 1:100 dilution

Secondary antibodies: Goat anti-Rabbit (488) at 1:1,000 dilution (shown in green) and Goat anti-Mouse (555) at 1:1,000 dilution (shown in red)

Nuclei were stained with DAPI (shown in blue).