

Anti-Histone H3 Rabbit mAb

Purified Recombinant Rabbit Monoclonal Antibody

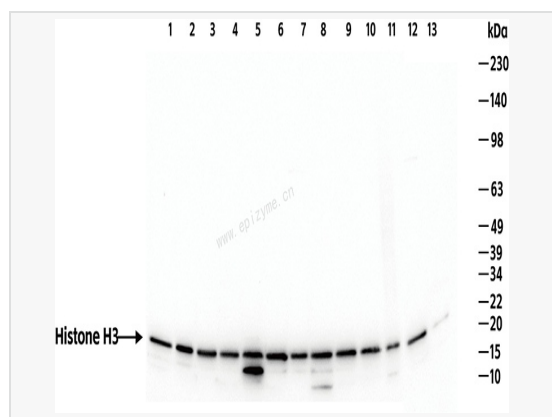
Catalog # R013738

Product Information

Application	WB, ELISA
Reactivity	Human, Mouse, Rat
Dilution	WB 1:2,000~1:5,000
Host	Rabbit
Clonality	Monoclonal
Clone No.	42I15C31
Isotype	IgG
Label	Unconjugated
Immunogen	A synthesized peptide derived from human Histone H3
Format	Affinity purified monoclonal antibody supplied in PBS with 0.01% sodium azide and 50% glycerol, pH 7.3.
Storage	Shipped on wet ice. Store at -20°C. Stable for 24 months from date of receipt. Aliquoting is unnecessary for -20°C storage.
Precautions	Anti-Histone H3 Rabbit mAb [42I15C31] is for research use only and not for use in diagnostic or therapeutic procedures.

Protein Information

Synonyms	H3 histone, family 3A, H3 histone, family 3B (H33B), H33A, H33B, H33, H3F3, H3F3A, H3F3B, Histone H33.
Calculated MW	Calculated MW: 15 kDa; Observed MW: 17 kDa
Uniprot ID	P68431
Gene ID	8350
Background	H3 Core component of nucleosome. Nucleosomes wrap and compact DNA into chromatin, limiting DNA accessibility to the cellular machineries which require DNA as a template. Histones thereby play a central role in transcription regulation, DNA repair, DNA replication and chromosomal stability.



Western Blot - Anti-Histone H3 Rabbit mAb [42115C31]

All lanes: R013738 at 1:2,000 dilution

Lane 1: HeLa (Human cervix adenocarcinoma epithelial cell) whole cell lysates

Lane 2: HepG2 (Human hepatocarcinoma epithelial cell) whole cell lysates

Lane 3: HCT116 (Human colorectal carcinoma epithelial cell) whole cell lysates

Lane 4: 293T (Human embryonic kidney cell) whole cell lysates

Lane 5: A431 (Human epidermoid teratoma cell line) whole cell lysates

Lane 6: MCF-7 (human breast adenocarcinoma epithelial cell) whole cell lysates

Lane 7: U87 (Human malignant glioblastoma epithelial cell) whole cell lysates

Lane 8: THP-1 (Human monocytic leukemia cell) whole cell lysates

Lane 9: K562 (Human chronic myeloid leukemia cell) whole cell lysates

Lane 10: Raw264.7 (Mouse mononuclear macrophage leukemia cell) whole cell lysates

Lane 11: Mouse liver whole tissue lysates

Lane 12: PC-12 (Rat adrenal pheochromocytoma epithelial cell) whole cell lysates

Lane 13: Rat brain whole tissue lysates

Lysates/proteins at 10 µg per lane.

Secondary antibody: Goat Anti-Rabbit IgG(H+L), HRP Conjugated (Cat. No. LF102) at 1:5,000 dilution

Predicted band size: 15 kDa

Observed band size: 17 kDa

Developed using the ECL technique (Cat. No. SQ201).