

Anti-Iba1 Rabbit mAb

Purified Recombinant Rabbit Monoclonal Antibody

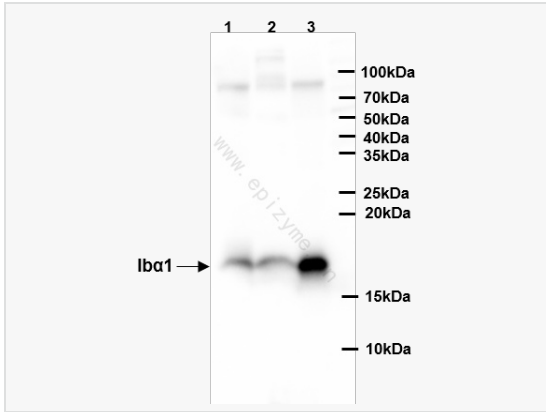
Catalog # R013733

Product Information

Application	WB, IHC-P/IF (Tissue-P), ELISA, IF (Cell)/ICC, IF (Tissue-F)
Reactivity	Human, Mouse, Rat
Dilution	WB 1:1,000~1:2,000; IHC-P 1:100~1:200; IF 1:100~1:200
Host	Rabbit
Clonality	Monoclonal
Clone No.	39E54J23
Isotype	IgG
Label	Unconjugated
Immunogen	A synthesized peptide derived from mouse Iba1
Format	Affinity purified monoclonal antibody supplied in PBS with 0.01% sodium azide and 50% glycerol, pH 7.3.
Storage	Shipped on wet ice. Store at -20°C. Stable for 24 months from date of receipt. Aliquoting is unnecessary for -20°C storage.
Precautions	Anti-Iba1 Rabbit mAb [39E54J23] is for research use only and not for use in diagnostic or therapeutic procedures.

Protein Information

Synonyms	AIF 1, AIF-1, Aif1, AIF1 protein, AIF1_HUMAN, Allograft inflammatory factor 1, Allograft inflammatory factor 1 splice variant G, allograft inflammatory factor-1 splice variant Hara-1, balloon angioplasty responsive transcription, BART 1, G1, G1 putative splice variant of allograft inflammatory factor 1, IBA 1, IBA1, interferon gamma responsive transcript, Interferon responsive transcript 1, interferon responsive transcript factor 1, Ionized calcium binding adapter molecule 1, Ionized calcium-binding adapter molecule 1, ionized calcium-binding adapter molecule, IRT 1, IRT1, Microglia response factor, MRF1, Protein g1.
Calculated MW	Calculated MW: 17 kDa; Observed MW: 17 kDa
Uniprot ID	O70200
Gene ID	11629
Background	Actin-binding protein that enhances membrane ruffling and RAC activation. Enhances the actin-bundling activity of LCP1. Binds calcium. Plays a role in RAC signaling and in phagocytosis. May play a role in macrophage activation and function. Promotes the proliferation of vascular smooth muscle cells and of T-lymphocytes. Enhances lymphocyte migration. Plays a role in vascular inflammation.



Western Blot - Anti-Iba1 Rabbit mAb [39E54J23]

All lanes: R013733 at 1:1,000 dilution

Lane 1: HeLa (human cervix adenocarcinoma epithelial cell) whole cell lysates

Lane 2: 293T (human embryonic kidney cell) whole cell lysates

Lane 3: MCF7 (human breast adenocarcinoma epithelial cell) whole cell lysates

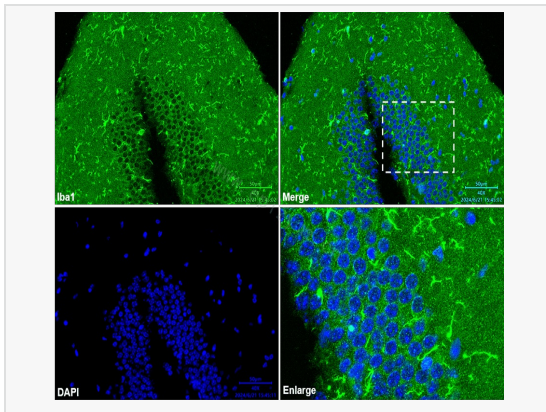
Lysates/proteins at 10 µg per lane.

Secondary antibody: Goat Anti-Rabbit IgG(H+L), HRP Conjugated (Cat. No. LF102) at 1:5,000 dilution

Predicted band size: 17 kDa

Observed band size: 17 kDa

Developed using the ECL technique (Cat. No. SQ201).



Immunofluorescence - Anti-Iba1 Rabbit mAb [39E54J23]

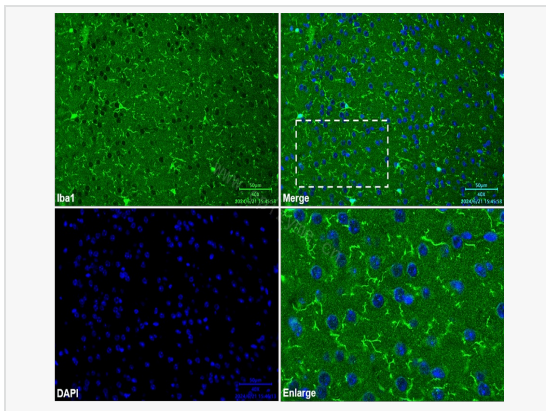
Sample: Paraformaldehyde-fixed, paraffin embedded mouse brain tissue (section of hippocampus)

The section was pre-treated using heat mediated antigen retrieval with Tris-EDTA buffer (pH 9.0) for 30 mins.

Primary antibody: R013733 at 1:50 dilution

Secondary antibody: Goat anti-Rabbit (488) at 1:1,000 dilution (shown in green)

Nuclei were stained with DAPI (shown in blue).



Immunofluorescence - Anti-Iba1 Rabbit mAb [39E54J23]

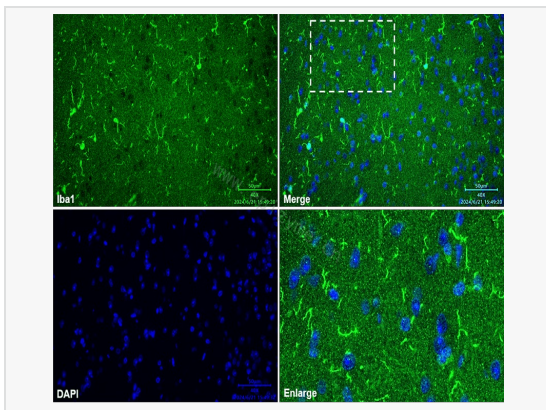
Sample: Paraformaldehyde-fixed, paraffin embedded mouse brain tissue (section of cerebral cortex)

The section was pre-treated using heat mediated antigen retrieval with Tris-EDTA buffer (pH 9.0) for 30 mins.

Primary antibody: R013733 at 1:50 dilution

Secondary antibody: Goat anti-Rabbit (488) at 1:1,000 dilution (shown in green)

Nuclei were stained with DAPI (shown in blue).



Immunofluorescence - Anti-Iba1 Rabbit mAb [39E54J23]

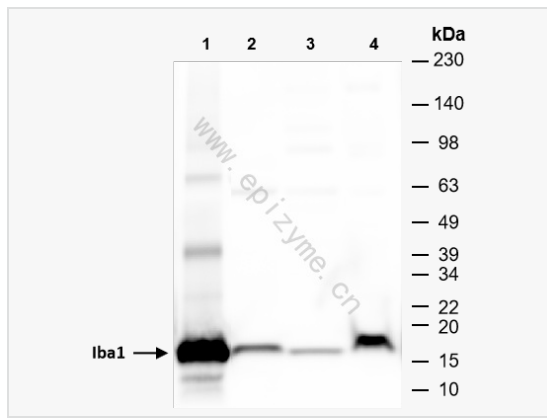
Sample: Paraformaldehyde-fixed, paraffin embedded mouse brain tissue (section of hypothalamus)

The section was pre-treated using heat mediated antigen retrieval with Tris-EDTA buffer (pH 9.0) for 30 mins.

Primary antibody: R013733 at 1:100 dilution

Secondary antibody: Goat anti-Rabbit (488) at 1:1,000 dilution (shown in green)

Nuclei were stained with DAPI (shown in blue).



Western Blot - Anti-Iba1 Rabbit mAb [39E54J23]

All lanes: R013733 at 1:1,000 dilution

Lane 1: Rat brain whole tissue lysates

Lane 2: Rat spleen whole tissue lysates

Lane 3: Rat kidney whole tissue lysates

Lane 4: Mouse brain whole tissue lysates

Lysates/proteins at 10 μ g per lane.

Secondary antibody: Goat Anti-Rabbit IgG(H+L), HRP Conjugated (Cat. No. LF102) at 1:5,000 dilution

Predicted band size: 17 kDa

Observed band size: 17 kDa

Developed using the ECL technique (Cat. No. SQ201).