

Anti-Cleaved-Caspase 3 p17 Rabbit pAb

Purified Rabbit Polyclonal Antibody

Catalog # P011406

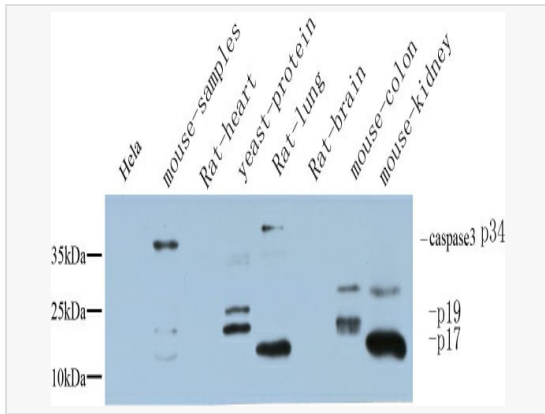
Product Information

Application	IHC-F/IF (Tissue-F), IHC-P/IF (Tissue-P), ELISA, ICC/IF (Cell), WB
Reactivity	Human, Mouse, Rat
Dilution	WB 1:500~1:1,000; IHC-P 1:50~1:100; IF 1:50~1:200; ELISA 1:10,000
Host	Rabbit
Clonality	Polyclonal
Isotype	IgG
Label	Unconjugated
Immunogen	The antiserum was produced against synthesized peptide derived from human Caspase 3.
Format	Buffer System: Liquid in PBS containing 50% glycerol, 0.5% BSA and 0.02% sodium azide, pH 7.3. Purification: Affinity Purified.
Storage	Shipped on wet ice. Store at -20°C. Stable for 24 months from date of receipt. Aliquoting is unnecessary for -20°C storage.
Precautions	Anti-Cleaved-Caspase 3 p17 antibody is for research use only and not for use in diagnostic or therapeutic procedures.

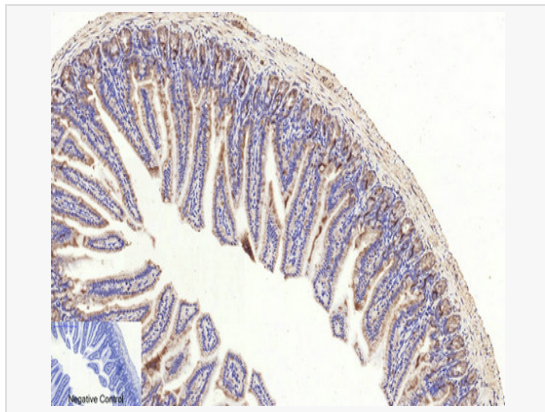
Protein Information

Synonyms	CASP3, CPP32, Caspase-3, CASP-3, Apopain, Cysteine protease CPP32, CPP-32, Protein Yama, SREBP cleavage activity 1, SCA-1.
Calculated MW	Calculated MW: 32 kDa; Observed MW: 17 kDa
Uniprot ID	P42574
Gene ID	836
Background	Sequential activation of caspases plays a central role in the execution-phase of cell apoptosis. Caspases exist as inactive proenzymes which undergo proteolytic processing at conserved aspartic residues to produce 2 subunits, large and small, that dimerize to form the active enzyme.

Validation Images



Western blot analysis of Cleaved-Caspase3 in various lysates using Cleaved-Caspase3 p17 antibody.



Immunohistochemistry analysis of paraffin-embedded mouse colon tissue using Cleaved-Caspase3 p17 antibody High-pressure and temperature Sodium Citrate pH 6.0 was used for antigen retrieval.