

## Anti-STAT3 Rabbit mAb

Purified Rabbit Monoclonal Antibody

Catalog # R013447

### Product Information

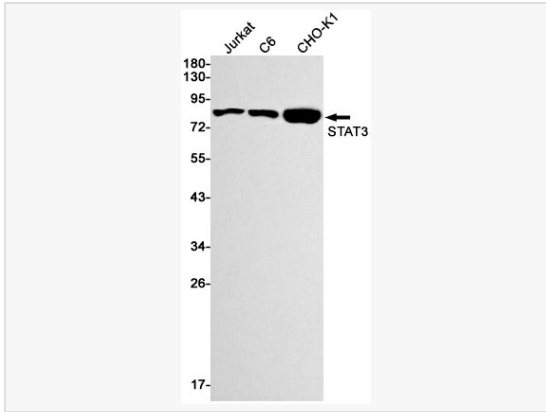
Application	WB, ELISA, ICC/IF (Cell), IP
Reactivity	Human, Rat
Dilution	WB 1:500~1:1,000; IF 1:50~1:200; IP 1:20
Host	Rabbit
Clonality	Monoclonal
Clone No.	42L32K10
Isotype	IgG
Label	Unconjugated
Immunogen	A synthetic peptide of human STAT3
Format	Buffer System: 50mM Tris-Glycine(pH 7.4), 0.15M NaCl, 40% Glycerol, 0.01% Sodium azide and 0.05% BSA Purification: Affinity Purified.
Storage	Shipped on wet ice. Store at -20°C. Stable for 24 months from date of receipt. Aliquoting is unnecessary for -20°C storage.
Precautions	Anti-STAT3 antibody [42L32K10] is for research use only and not for use in diagnostic or therapeutic procedures.

### Protein Information

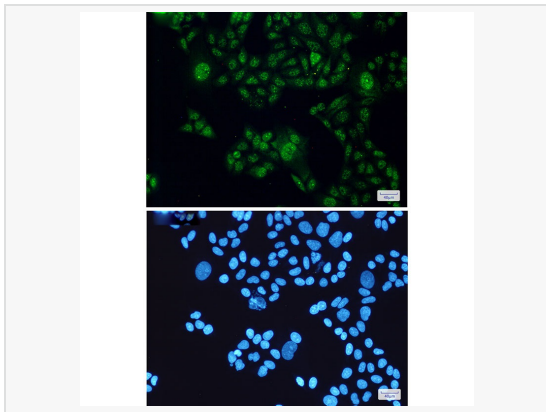
Synonyms	STAT3, APRF, Signal transducer and activator of transcription 3, Acute-phase response factor.
Calculated MW	Calculated MW: 88 kDa; Observed MW: 88 kDa
Uniprot ID	P40763
Gene ID	6774
Background	The protein encoded by this gene is a member of the STAT protein family. In response to cytokines and growth factors, STAT family members are phosphorylated by the receptor associated kinases, and then form homo- or heterodimers that translocate to the cell nucleus where they act as transcription activators.

## Validation Images

---



Western blot analysis of STAT3 in Jurkat, C6, CHO-K1 lysates using STAT3 antibody.



Immunocytochemistry analysis of STAT3(green) in HeLa using STAT3 antibody and DAPI (blue)