

Anti-ERK1 Rabbit mAb

Purified Rabbit Monoclonal Antibody

Catalog # R010960

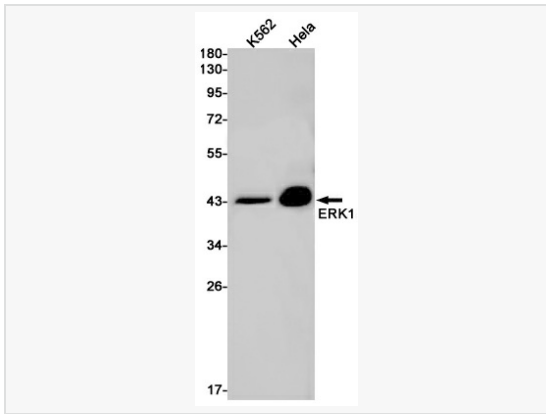
Product Information

Application	WB, IHC-P/IF (Tissue-P), IP, ELISA
Reactivity	Human
Dilution	WB 1:500~1:1,000; IHC-P 1:50~1:100; IP 1:20
Host	Rabbit
Clonality	Monoclonal
Clone No.	31L89M37
Isotype	IgG
Label	Unconjugated
Immunogen	A synthetic peptide of human ERK1
Format	Buffer System: 50mM Tris-Glycine(pH 7.4), 0.15M NaCl, 40% Glycerol, 0.01% Sodium azide and 0.05% BSA Purification: Affinity Purified.
Storage	Shipped on wet ice. Store at -20°C. Stable for 24 months from date of receipt. Aliquoting is unnecessary for -20°C storage.
Precautions	Anti-ERK1 antibody [31L89M37] is for research use only and not for use in diagnostic or therapeutic procedures.

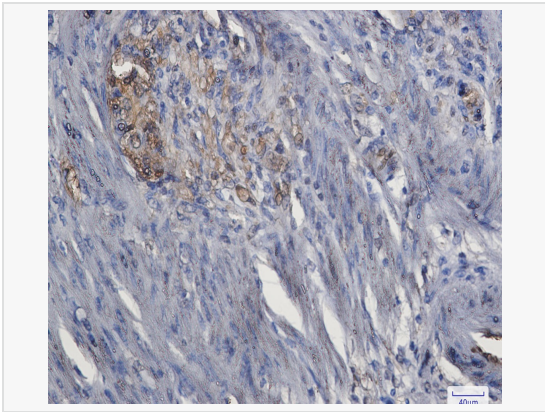
Protein Information

Synonyms	MAPK3.
Calculated MW	Calculated MW: 43 kDa; Observed MW: 43 kDa
Uniprot ID	P27361
Gene ID	5595
Background	Serine/threonine kinase which acts as an essential component of the MAP kinase signal transduction pathway. MAPK1/ERK2 and MAPK3/ERK1 are the 2 MAPKs which play an important role in the MAPK/ERK cascade. They participate also in a signaling cascade initiated by activated KIT and KITLG/SCF. Depending on the cellular context, the MAPK/ERK cascade mediates diverse biological functions such as cell growth, adhesion, survival and differentiation through the regulation of transcription, translation, cytoskeletal rearrangements.

Validation Images



Western blot analysis of ERK1 in K562, HeLa lysates using ERK1 antibody.



Immunohistochemistry analysis of paraffin-embedded Human colon cancer using ERK1 antibody. High-pressure and temperature Sodium Citrate pH 6.0 was used for antigen retrieval.