

## Anti-CDK6 Rabbit mAb

Purified Recombinant Rabbit Monoclonal Antibody

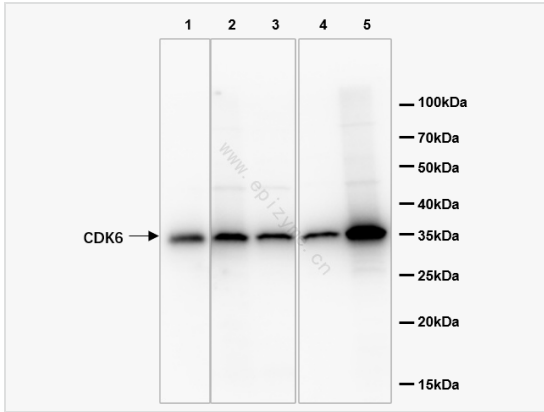
Catalog # R013385

### Product Information

Application	WB, IHC-P/IF (Tissue-P), IF (Cell)/ICC, ELISA
Reactivity	Human, Mouse
Dilution	WB 1:1,000~1:2,000; IHC-P 1:200; IF 1:100
Host	Rabbit
Clonality	Monoclonal
Clone No.	83K54M88
Isotype	IgG
Label	Unconjugated
Immunogen	A synthesized peptide derived from human Cdk6
Format	Affinity purified monoclonal antibody supplied in PBS with 0.01% sodium azide and 50% glycerol, pH 7.3.
Storage	Shipped on wet ice. Store at -20°C. Stable for 24 months from date of receipt. Aliquoting is unnecessary for -20°C storage.
Precautions	Anti-CDK6 antibody [83K54M88] is for research use only and not for use in diagnostic or therapeutic procedures.

### Protein Information

Synonyms	CDK 6, Cell division protein kinase 6, Crk 2, Cyclin dependent kinase 6, p40, PLSTIRE, STQTL11.
Calculated MW	Calculated MW: 34 kDa; Observed MW: 34 kDa
Uniprot ID	Q00534
Gene ID	1021
Background	The cyclin-dependent kinases form complexes with their cyclin partners and with CDK inhibitors. CDK6 and CDK4 associate with the D-type cyclins and target the retinoblastoma protein, allowing passage through the G1/S phase restriction point.



Western Blot - Anti-CDK6 Rabbit mAb [83K54M88]

All lanes: R013385 at 1:1,000 dilution

Lane 1: HeLa (human cervix adenocarcinoma epithelial cell) whole cell lysates

Lane 2: T24 (human bladder cancer epithelial cell) whole cell lysates

Lane 3: HepG2 (human hepatocellular carcinoma epithelial cell) whole cell lysates

Lane 4: SW620 (human colorectal carcinoma epithelial cell) whole cell lysates

Lane 5: Balb/c mouse kidney whole tissue lysates

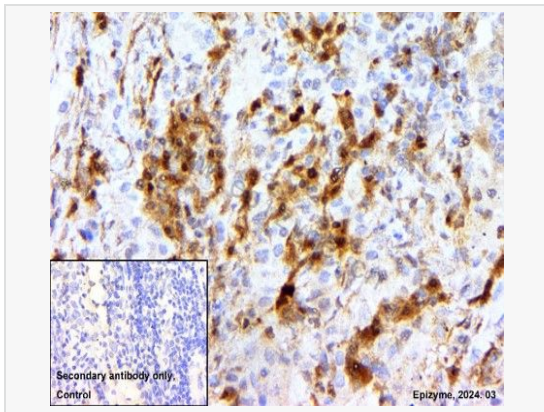
Lysates/proteins at 10 µg per lane.

Secondary antibody: Goat Anti-Rabbit IgG(H+L), HRP Conjugated (Cat. No. LF102) at 1:5,000 dilution

Predicted band size: 34 kDa

Observed band size: 34 kDa

Developed using the ECL technique (Cat. No. SQ201).



Immunohistochemistry - Anti-CDK6 Rabbit mAb [83K54M88]

Sample: Paraformaldehyde-fixed, paraffin embedded human lung cancer tissue

Heat mediated antigen retrieval with Tris-EDTA buffer (pH 9.0) for 30 mins.

Primary antibody: R013385 at 1:200 dilution

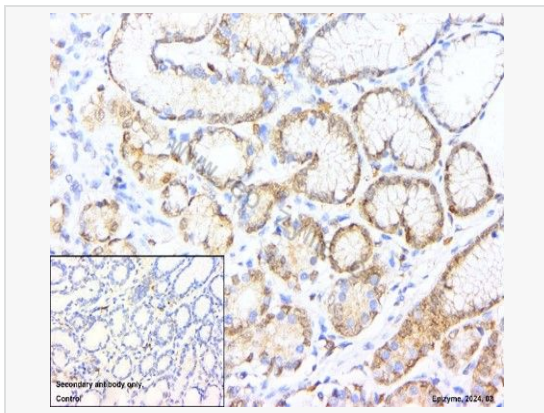
Secondary antibody: Goat Anti-Rabbit IgG (H+L), HRP conjugated at 1:1,000 dilution

DAB was used as the chromogen.

Counter stained with hematoxylin.

Positive/negative staining were presented.

Only the secondary antibody was used as the negative control.



Immunohistochemistry - Anti-CDK6 Rabbit mAb [83K54M88]

Sample: Paraformaldehyde-fixed, paraffin embedded human gastric cancer tissue

Heat mediated antigen retrieval with Tris-EDTA buffer (pH 9.0) for 30 mins.

Primary antibody: R013385 at 1:200 dilution

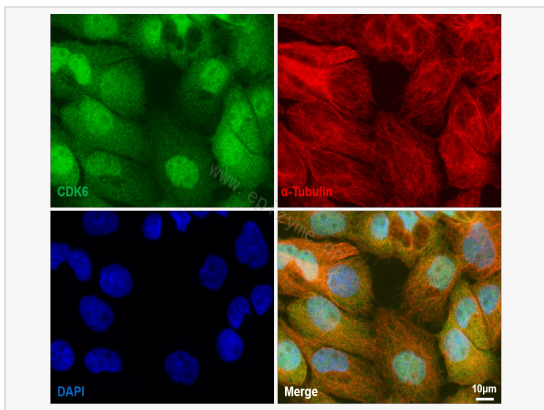
Secondary antibody: Goat Anti-Rabbit IgG (H+L), HRP conjugated at 1:1,000 dilution

DAB was used as the chromogen.

Counter stained with hematoxylin.

Positive/negative staining were presented.

Only the secondary antibody was used as the negative control.



Immunofluorescence - Anti-CDK6 Rabbit mAb [83K54M88]

Sample: A431 cells

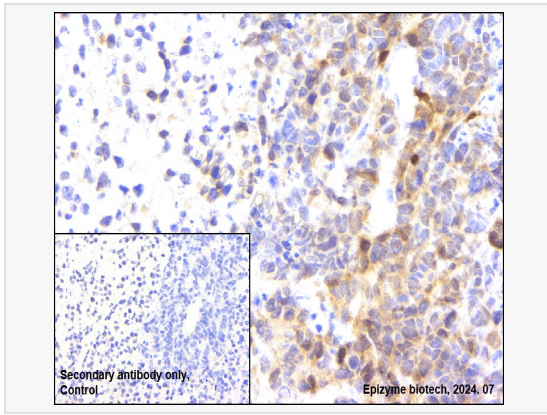
The cells were fixed with 4% paraformaldehyde (10 min), permeabilized with 0.5% Triton X-100 for 10 minutes and then blocked with 5% BSA in 0.1% PBS-Tween for 0.5 hours.

Primary antibodies: R013385 at 1:100 dilution and  $\alpha$ -tubulin Mouse Monoclonal Antibody (Cat. No. LF209) at 1:100 dilution

Secondary antibodies: Goat anti-Rabbit (488) at 1:1,000 dilution (shown in green) and

Goat anti-Mouse (555) at 1:1,000 dilution (shown in red)

Nuclei were stained with DAPI (shown in blue).



Immunohistochemistry - Anti-CDK6 Rabbit mAb [83K54M88]

Sample: Paraformaldehyde-fixed, paraffin embedded mouse subcutaneous tumor tissue  
Heat mediated antigen retrieval with Tris-EDTA buffer (pH 9.0) for 30 mins.

Primary antibody: R013385 at 1:200 dilution

Secondary antibody: Goat Anti-Rabbit IgG (H+L), HRP conjugated at 1:1,000 dilution

DAB was used as the chromogen.

Counter stained with hematoxylin.

Positive/negative staining were presented.

Only the secondary antibody was used as the negative control.