

# Anti-HP1 gamma Mouse mAb

Purified Mouse Monoclonal Antibody

Catalog # M010877

## Product Information

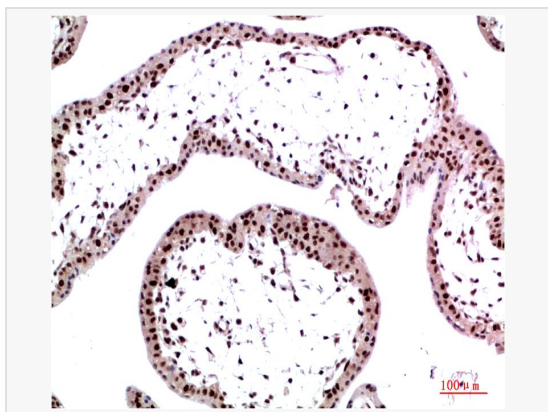
Application	WB, IHC-P/IF (Tissue-P), ELISA
Reactivity	Human, Rat, Mouse (Cell)
Dilution	WB 1:500~1:1,000; IHC-P 1:50~1:100
Host	Mouse
Clonality	Monoclonal
Clone No.	72K19K71
Isotype	IgG1
Label	Unconjugated
Immunogen	Purified recombinant protein expressed in E.coli.
Format	Buffer System: Liquid in PBS containing 50% glycerol, 0.5% BSA and 0.02% sodium azide, pH 7.3. Purification: Affinity Purified.
Storage	Shipped on wet ice. Store at -20°C. Stable for 24 months from date of receipt. Aliquoting is unnecessary for -20°C storage.
Precautions	Anti-HP1 gamma antibody [72K19K71] is for research use only and not for use in diagnostic or therapeutic procedures.

## Protein Information

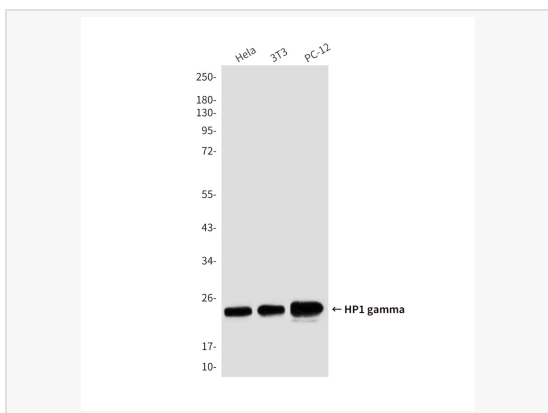
Synonyms	CBX3, Chromobox protein homolog 3, HECH, Heterochromatin protein 1 homolog gamma, HP1 gamma, Modifier 2 protein.
Calculated MW	Calculated MW: 21 kDa; Observed MW: 24 kDa
Uniprot ID	Q13185
Gene ID	11335
Background	Recognizes and binds histone H3 tails methylated at 'Lys-9', leading to epigenetic repression. May contribute to the association of the heterochromatin with the inner nuclear membrane through its interaction with lamin B receptor (LBR). Involved in the formation of functional kinetochore through interaction with MIS12 complex proteins.



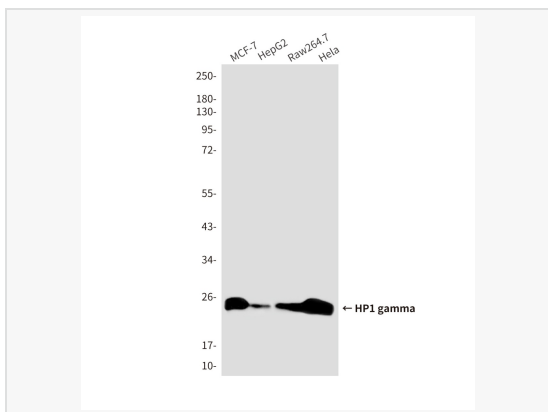
Immunohistochemistry analysis of paraffin-embedded Human Colon Carcinoma Tissue using HP1 gamma antibody [72K19K71]. High-pressure and temperature Sodium Citrate pH 6.0 was used for antigen retrieval.



Immunohistochemical analysis of paraffin-embedded Human tonsils using HP1 gamma antibody [72K19K71]. High-pressure and temperature Sodium Citrate pH 6.0 was used for antigen retrieval.



Western blot analysis of HP1 gamma in HeLa lysates, 3T3 lysates, PC-12 lysates using HP1 gamma antibody [72K19K71].



Western blot analysis of HP1 gamma in MCF-7, HepG2, Raw264.7, HeLa lysates using HP1 gamma antibody [72K19K71].