

Anti-Hsp70 1A Mouse mAb

Purified Mouse Monoclonal Antibody

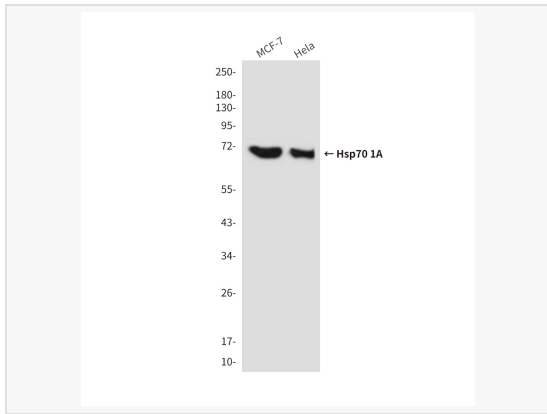
Catalog # M012140

Product Information

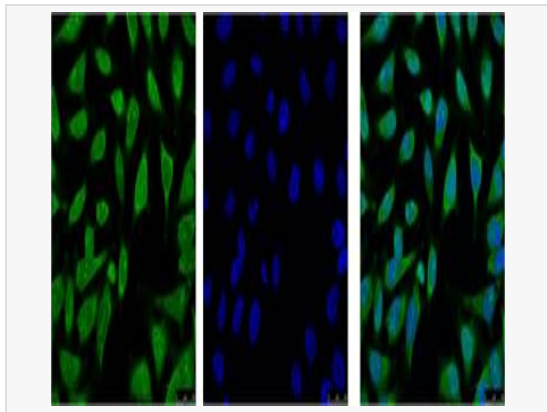
Application	ELISA, WB, IHC-F/IF (Tissue-F), IHC-P/IF (Tissue-P), ICC/IF (Cell)
Reactivity	Human, Mouse (Cell), Rat
Dilution	WB 1:500~1:1,000; IHC-P 1:50~1:100; IF 1:50~1:200
Host	Mouse
Clonality	Monoclonal
Clone No.	63L71L52
Isotype	IgG1
Label	Unconjugated
Immunogen	Synthetic Peptide of HSP70
Format	Buffer System: Liquid in PBS containing 50% glycerol, 0.5% BSA and 0.02% sodium azide, pH 7.3. Purification: Affinity Purified.
Storage	Shipped on wet ice. Store at -20°C. Stable for 24 months from date of receipt. Aliquoting is unnecessary for -20°C storage.
Precautions	Anti-Hsp70 1A antibody [63L71L52] is for research use only and not for use in diagnostic or therapeutic procedures.

Protein Information

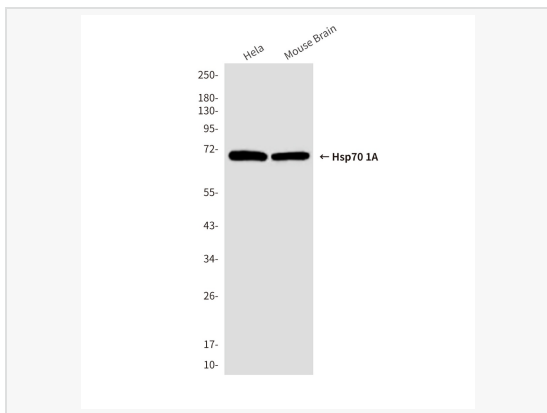
Synonyms	HSP72, HSPA1, HSP70I, HSPA1B, HSP70-1, HSP70-1A.
Calculated MW	Calculated MW: 70 kDa; Observed MW: 70 kDa
Uniprot ID	PODMV8
Gene ID	3303
Background	In conjunction with other heat shock proteins, this protein stabilizes existing proteins against aggregation and mediates the folding of newly translated proteins in the cytosol and in organelles. It is also involved in the ubiquitin-proteasome pathway through interaction with the AU-rich element RNA-binding protein 1. The gene is located in the major histocompatibility complex class III region, in a cluster with two closely related genes which encode similar proteins.



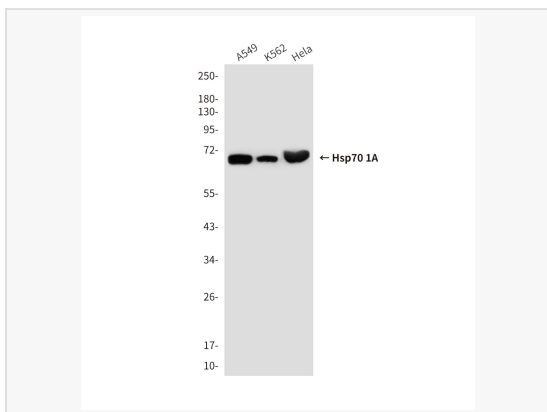
Western blot analysis of Hsp70 in MCF-7 and HeLa lysates using Hsp70 antibody [63L71L52].



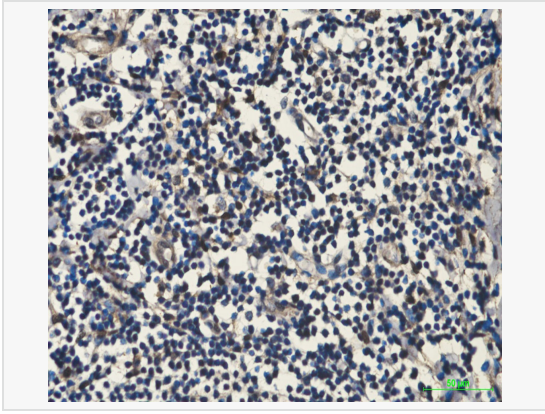
Immunofluorescence analysis of Hsp70 1A in HeLa using Hsp70 1A antibody [63L71L52] (left) and DAPI (blue).



Western blot analysis of Hsp70 1A in HeLa, mouse Brain lysates using Hsp70 1A antibody [63L71L52].



Western blot analysis of Hsp70 1A in A549, K562, HeLa lysates using Hsp70 1A antibody [63L71L52].



Immunohistochemistry analysis of paraffin-embedded Human tonsil tissue using HSP70 antibody [63L71L52]. High-pressure and temperature Sodium Citrate pH 6.0 was used for antigen retrieval.