

Anti-Phospho-Smad2/3 (Thr8) Rabbit pAb

Purified Rabbit Polyclonal Antibody

Catalog # P011137

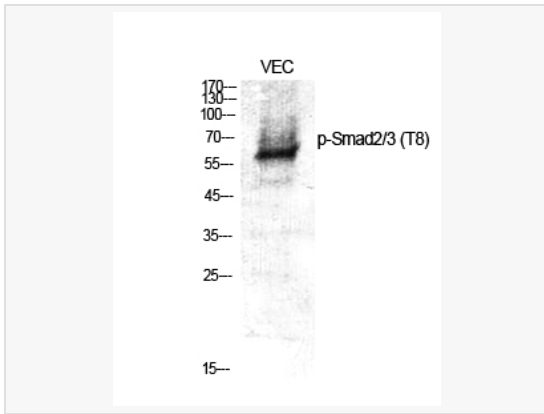
Product Information

Application	WB, ELISA
Reactivity	Human, Mouse, Rat
Dilution	WB 1:500~1:1,000; ELISA 1:10,000
Host	Rabbit
Clonality	Polyclonal
Isotype	IgG
Label	Unconjugated
Immunogen	The antiserum was produced against synthesized peptide derived from human Smad2/3 around the phosphorylation site of Thr8.
Format	Buffer System: Liquid in PBS containing 50% glycerol, 0.5% BSA and 0.02% sodium azide, pH 7.3. Purification: Affinity Purified.
Storage	Shipped on wet ice. Store at -20°C. Stable for 24 months from date of receipt. Aliquoting is unnecessary for -20°C storage.
Precautions	Anti-Phospho-Smad2/3 (Thr8) antibody is for research use only and not for use in diagnostic or therapeutic procedures.

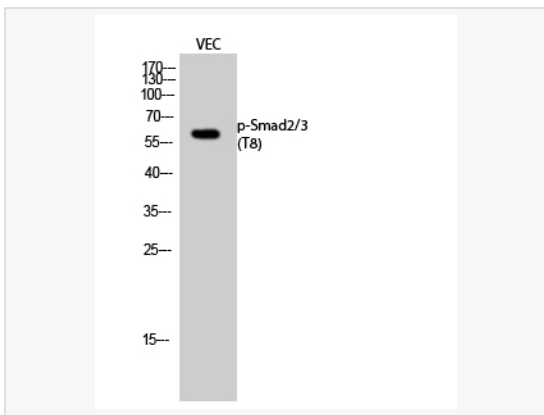
Protein Information

Synonyms	SMAD2, MADH2, MADR2, Mothers against decapentaplegic homolog 2, MAD homolog 2, Mothers against DPP homolog 2, JV18-1, Mad-related protein 2, hMAD-2, SMAD family member 2, SMAD 2, Smad2, hSMAD2, SMAD3, MADH3, Mothers against decapentaplegic.
Calculated MW	Calculated MW: 52 kDa; Observed MW: 48-52, 60 kDa
Uniprot ID	Q15796, P84022
Gene ID	4087/4088
Background	The protein encoded by this gene belongs to the SMAD, a family of proteins similar to the gene products of the Drosophila gene 'mothers against decapentaplegic' (Mad) and the C. elegans gene Sma. SMAD proteins are signal transducers and transcriptional modulators that mediate multiple signaling pathways.

Validation Images



Western blot analysis of Phospho-Smad2/3 (Thr8) in various lysates using Phospho-Smad2/3 (Thr8) antibody.



Western blot analysis of Phospho-Smad2/3 (Thr8) in VEC lysates using Phospho-Smad2/3 (T8) antibody.