

Anti-SMARCA2 Rabbit mAb

Purified Recombinant Rabbit Monoclonal Antibody

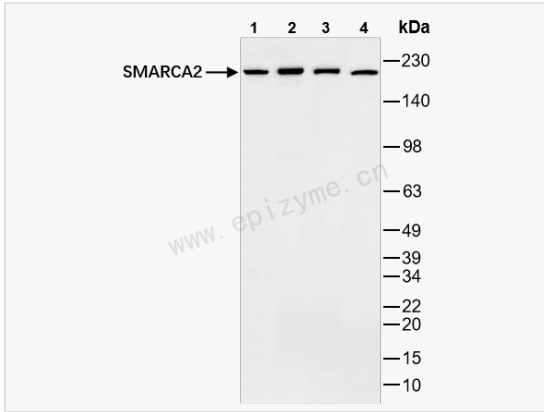
Catalog # R011008

Product Information

Application	WB, IHC-P/IF (Tissue-P), IF (Cell)/ICC, ELISA
Reactivity	Human
Dilution	WB 1:1,000~1:2,000; IHC-P 1:100~1:200; IF 1:100~1:200
Host	Rabbit
Clonality	Monoclonal
Clone No.	88K86M47
Isotype	IgG
Label	Unconjugated
Immunogen	A synthesized peptide derived from human SMARCA2/BRM
Format	Affinity purified monoclonal antibody supplied in PBS with 0.02% sodium azide and 50% glycerol, pH 7.3.
Storage	Shipped on wet ice. Store at -20°C. Stable for 24 months from date of receipt. Aliquoting is unnecessary for -20°C storage.
Precautions	Anti-SMARCA2 Rabbit mAb [88K86M47] is for research use only and not for use in diagnostic or therapeutic procedures.

Protein Information

Synonyms	BAF190B; BRM; SNF2A; SNF2L2; SMARCA2; Probable global transcription activator SNF2L2; ATP-dependent helicase SMARCA2; BRG1-associated factor 190B; Protein brahma homolog; SNF2-alpha; SWI/SNF-related matrix-associated actin-dependent regulator of chromatin subfamily A member 2; hBRM.
Calculated MW	Calculated MW: 181 kDa; Observed MW: 190 kDa
Uniprot ID	P51531
Gene ID	6595
Background	The protein encoded by this gene is a member of the SWI/SNF family of proteins and is highly similar to the brahma protein of <i>Drosophila</i> . Members of this family have helicase and ATPase activities and are thought to regulate transcription of certain genes by altering the chromatin structure around those genes. The encoded protein is part of the large ATP-dependent chromatin remodeling complex SNF/SWI, which is required for transcriptional activation of genes normally repressed by chromatin. Alternatively spliced transcript variants encoding different isoforms have been found for this gene, which contains a trinucleotide repeat (CAG) length polymorphism. [provided by RefSeq, Jan 2014]
Cellular Location	Nucleus. Localizes to sites of DNA damage.



Western Blot - Anti-SMARCA2 Rabbit mAb [88K86M47]

All lanes: R011008 at 1:1,000 dilution

Lane 1: HeLa (Human cervix adenocarcinoma epithelial cell) whole cell lysates

Lane 2: HepG2 (Human hepatocarcinoma epithelial cell) whole cell lysates

Lane 3: K562 (Human chronic myeloid leukemia cell) whole cell lysates

Lane 4: U87 (Human malignant glioblastoma epithelial cells) whole cell lysates

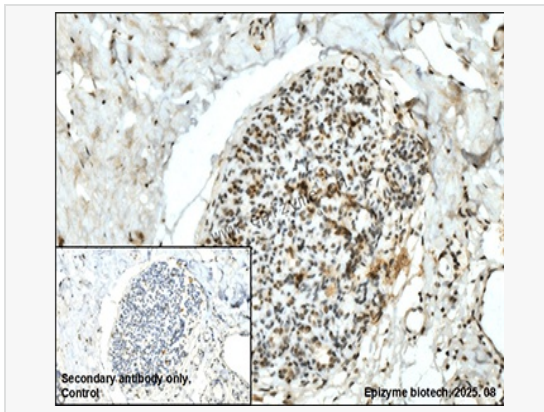
Lysates/proteins at 10 µg per lane.

Secondary antibody: Goat Anti-Rabbit IgG (H+L), HRP Conjugated (Cat. No. LF102) at 1:5,000 dilution

Predicted band size: 181 kDa

Observed band size: 190 kDa

Developed using the ECL technique (Cat. No. SQ201).



Immunohistochemistry - Anti-SMARCA2 Rabbit mAb [88K86M47]

Sample: Paraformaldehyde-fixed, paraffin embedded human ovarian cancer tissue

Heat mediated antigen retrieval with Tris-EDTA buffer (pH 9.0) for 30 mins.

Primary antibody: R011008 at 1:200 dilution

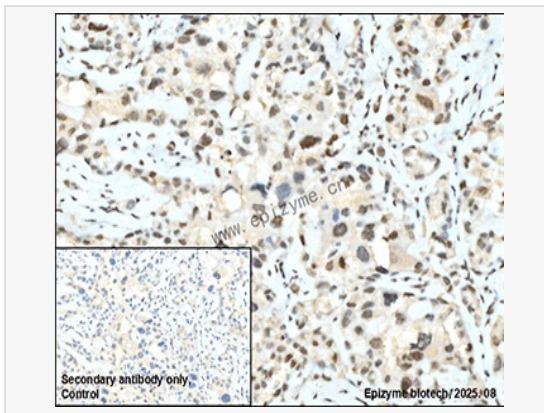
Secondary antibody: Goat Anti-Rabbit IgG (H+L), HRP conjugated at 1:1,000 dilution

DAB was used as the chromogen.

Counter stained with hematoxylin.

Positive/negative staining were presented.

Only the secondary antibody was used as the negative control.



Immunohistochemistry - Anti-SMARCA2 Rabbit mAb [88K86M47]

Sample: Paraformaldehyde-fixed, paraffin embedded human breast cancer tissue

Heat mediated antigen retrieval with Tris-EDTA buffer (pH 9.0) for 30 mins.

Primary antibody: R011008 at 1:200 dilution

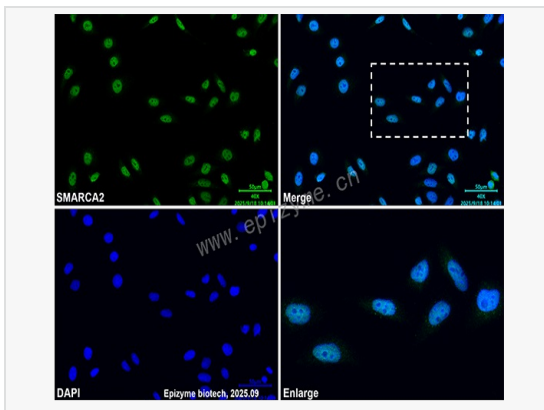
Secondary antibody: Goat Anti-Rabbit IgG (H+L), HRP conjugated at 1:1,000 dilution

DAB was used as the chromogen.

Counter stained with hematoxylin.

Positive/negative staining were presented.

Only the secondary antibody was used as the negative control.



Immunofluorescence - Anti-SMARCA2 Rabbit mAb [88K86M47]

Sample: HeLa cells

The cells were fixed with 4% paraformaldehyde (10 min), permeabilized with 0.5% Triton X-100 for 10 minutes and then blocked with 5% BSA in 0.1% PBS-Tween for 0.5 hours.

Primary antibodies: R011008 at 1:100 dilution

Secondary antibodies: Goat anti-Rabbit (488) at 1:1,000 dilution (shown in green)

Nuclei were stained with DAPI (shown in blue).