

Anti-SKP2 Rabbit mAb

Purified Rabbit Monoclonal Antibody

Catalog # R010369

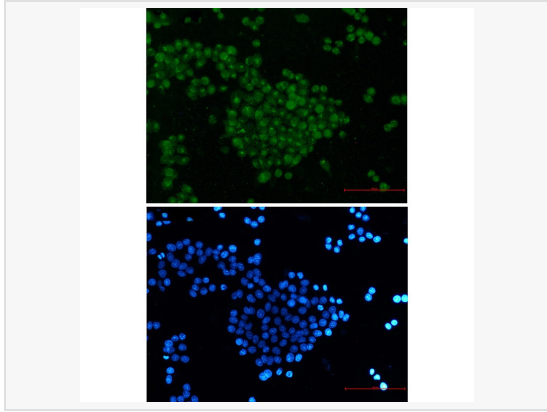
Product Information

| | |
|-------------|---|
| Application | WB, IHC-P/IF (Tissue), IF (Cell)/ICC, FC, ELISA |
| Reactivity | Human, Mouse, Rat |
| Dilution | WB 1:1,000; IHC-P 1:50; IF 1:100; FC 1:50~1:100 |
| Host | Rabbit |
| Clonality | Monoclonal |
| Clone No. | 20L32L79 |
| Isotype | IgG |
| Label | Unconjugated |
| Immunogen | A synthetic peptide of human SKP2 |
| Format | Buffer System: 50mM Tris-Glycine(pH 7.4), 0.15M NaCl, 40% Glycerol, 0.01% Sodium azide and 0.05% BSA Purification: Affinity Purified. |
| Storage | Shipped on wet ice. Store at -20°C. Stable for 24 months from date of receipt. Aliquoting is unnecessary for -20°C storage. |
| Precautions | Anti-SKP2 antibody [20L32L79] is for research use only and not for use in diagnostic or therapeutic procedures. |

Protein Information

| | |
|---------------|---|
| Synonyms | SKP2, FBXL1, S-phase kinase-associated protein 2, Cyclin-A/CDK2-associated protein p45, F-box protein Skp2, F-box/LRR-repeat protein 1, p45skp2. |
| Calculated MW | Calculated MW: 48 kDa; Observed MW: 48 kDa |
| Uniprot ID | Q13309 |
| Gene ID | 6502 |
| Background | Substrate recognition component of a SCF (SKP1-CUL1-F-box protein) E3 ubiquitin-protein ligase complex which mediates the ubiquitination and subsequent proteasomal degradation of target proteins involved in cell cycle progression, signal transduction and transcription. |

Validation Images



Immunocytochemistry analysis of SKP2 (green) in HeLa using SKP2 Rabbit mAb, and DAPI (blue).