

Anti-Glutathione Synthetase Rabbit mAb

Purified Rabbit Monoclonal Antibody

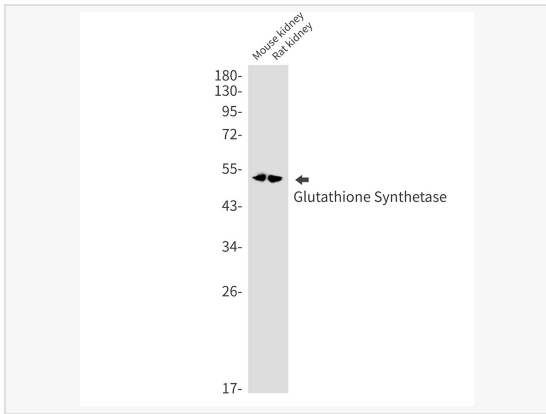
Catalog # R011196

Product Information

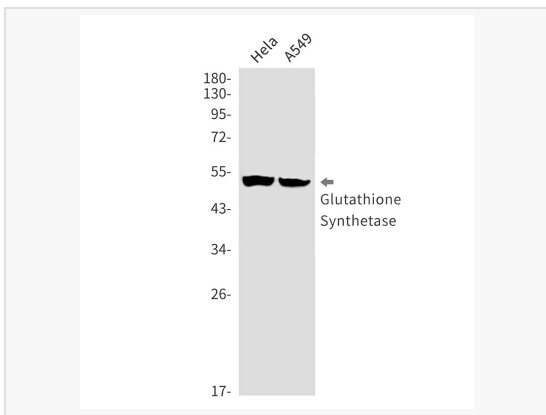
Application	WB, IHC-P/IF (Tissue-P), ELISA
Reactivity	Mouse, Human, Rat
Dilution	WB 1:500~1:1,000; IHC-P 1:50~1:100
Host	Rabbit
Clonality	Monoclonal
Clone No.	36M80L40
Isotype	IgG
Label	Unconjugated
Immunogen	A synthetic peptide of human Glutathione Synthetase
Format	Buffer System: 50mM Tris-Glycine(pH 7.4), 0.15M NaCl, 40% Glycerol, 0.01% Sodium azide and 0.05% BSA Purification: Affinity Purified.
Storage	Shipped on wet ice. Store at -20°C. Stable for 24 months from date of receipt. Aliquoting is unnecessary for -20°C storage.
Precautions	Anti-Glutathione Synthetase antibody [36M80L40] is for research use only and not for use in diagnostic or therapeutic procedures.

Protein Information

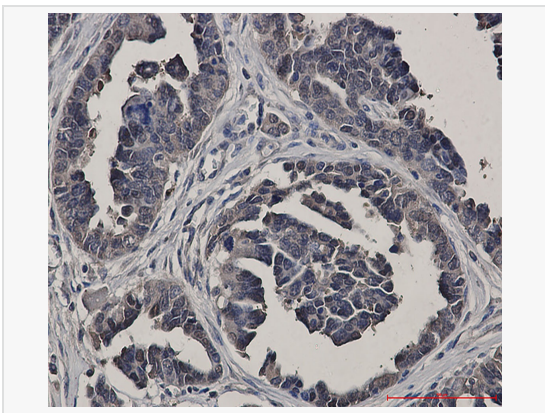
Synonyms	Glutathione synthase, Glutathione synthetase, GSH S, GSH synthetase, GSH-S, GSHS, GSS, HEL-S-64p, HEL-S-88n.
Calculated MW	Calculated MW: 52 kDa; Observed MW: 52 kDa
Uniprot ID	P48637
Gene ID	2937
Background	Sulfur metabolism; glutathione biosynthesis; glutathione from L-cysteine and L-glutamate: step 2/2.



Western blot analysis of Glutathione Synthetase in mouse kidney, rat kidney lysates using Glutathione Synthetase antibody.



Western blot analysis of Glutathione Synthetase in HeLa, A549 lysates using Glutathione Synthetase antibody.



Immunohistochemistry analysis of paraffin-embedded Human Cholangiocarcinoma using Glutathione Synthetase antibody. High-pressure and temperature Sodium Citrate pH 6.0 was used for antigen retrieval.